

Datasheet for ABIN1532555  
**anti-L1CAM antibody (AA 1147-1196)**



[Go to Product page](#)

2 Images

## Overview

|                      |   |
|----------------------|---|
| Quantity:            | 100 µL  |
| Target:              | L1CAM   |
| Binding Specificity: | AA 1147-1196  |
| Reactivity:          | Human, Mouse, Rat                                     |
| Host:                | Rabbit  |
| Clonality:           | Polyclonal  |
| Conjugate:           | This L1CAM antibody is un-conjugated                  |
| Application:         | Western Blotting (WB), ELISA, Immunofluorescence (IF) |

## Product Details

|               |   |
|---------------|---|
| Immunogen:    | The antiserum was produced against synthesized peptide derived from human CD171/N-CAML1.    |
| Isotype:      | IgG   |
| Specificity:  | CD171/N-CAML1 Antibody detects endogenous levels of total CD171/N-CAML1 protein.            |
| Purification: | The antibody was purified from rabbit antiserum by affinity-chromatography using immunogen. |
| Purity:       | > 95 %  |

## Target Details

|                   |  |
|-------------------|--|
| Target:           | L1CAM  |
| Alternative Name: | CD171/N-CAML1 ( <a href="#">L1CAM Products</a> ) |

## Target Details

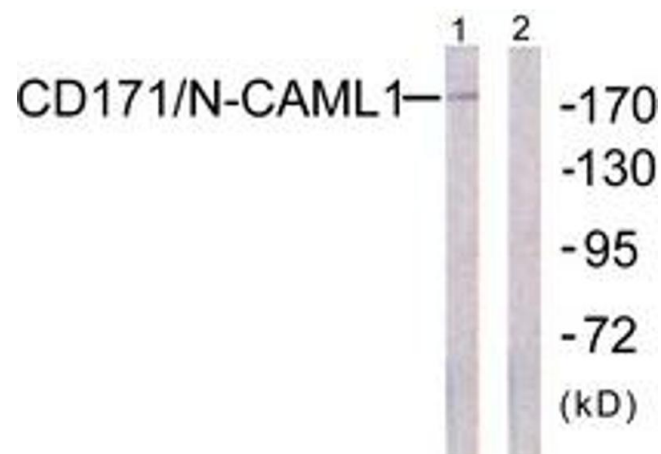
|                   |  |
|-------------------|--|
| Background:       | Synonyms: CAML, CAML1, CD171 antigen, L1CAM, MIC5, Neural cell adhesion molecule L1 precursor<br>NCBI Gene Symbol: L1CAM |
| Molecular Weight: | 140 kDa  |
| Gene ID:          | 3897   |
| OMIM:             | 142623   |
| UniProt:          | <a href="#">P32004</a>   |
| Pathways:         | <a href="#">Synaptic Membrane</a>  |

## Application Details

|                    |   |
|--------------------|---|
| Application Notes: | WB: 1:500~1:1000 IF: 1:100~1:500 ELISA: 1:1000      |
| Comment:           | Unigene-Number: Hs.522818 (NCBI Gene Symbol: L1CAM) |
| Restrictions:      | For Research Use only                               |

## Handling

|                    |  |
|--------------------|--|
| Format:            | Liquid   |
| Concentration:     | 1 mg/mL  |
| Buffer:            | phosphate buffered saline (without Mg2+ and Ca2+), pH 7.4, 150 mM NaCl, 0.02 % sodium azide and 50 % glycerol.         |
| Preservative:      | Sodium azide   |
| Precaution of Use: | This product contains sodium azide: a POISONOUS AND HAZARDOUS SUBSTANCE which should be handled by trained staff only. |
| Storage:           | -20 °C   |
| Storage Comment:   | Stable at -20°C for at least 1 year.   |
| Expiry Date:       | 12 months  |



#### Western Blotting

**Image 1.** Western blot analysis of extracts from K562 cells, using CD171/N-CAML1 (Ab-1181) Antibody. The lane on the right is treated with the synthesized peptide.



#### Immunofluorescence

**Image 2.** Immunofluorescence analysis of HepG2 cells, using CD171/N-CAML1 (Ab-1181) Antibody. The picture on the right is treated with the synthesized peptide.