

Datasheet for ABIN1532559

anti-CD4 antibody (AA 401-450)**3** Images**1** Publication[Go to Product page](#)

Overview

Quantity:	100 µL
Target:	CD4
Binding Specificity:	AA 401-450
Reactivity:	Human, Mouse
Host:	Rabbit
Clonality:	Polyclonal
Conjugate:	This CD4 antibody is un-conjugated
Application:	Western Blotting (WB), Immunohistochemistry (IHC), ELISA, Immunofluorescence (IF)

Product Details

Immunogen:	The antiserum was produced against synthesized peptide derived from human CD4.
Isotype:	IgG
Specificity:	CD4 Antibody detects endogenous levels of total CD4 protein.
Purification:	The antibody was purified from rabbit antiserum by affinity-chromatography using immunogen.
Purity:	> 95 %

Target Details

Target:	CD4
Alternative Name:	CD4 (CD4 Products)
Background:	Synonyms: CD4, T-cell surface antigen T4/Leu-3, T-cell surface glycoprotein CD4 precursor

Target Details

	NCBI Gene Symbol: CD4
Molecular Weight:	51 kDa
Gene ID:	920
OMIM:	186940
UniProt:	P01730
Pathways:	TCR Signaling , Maintenance of Protein Location , CXCR4-mediated Signaling Events

Application Details

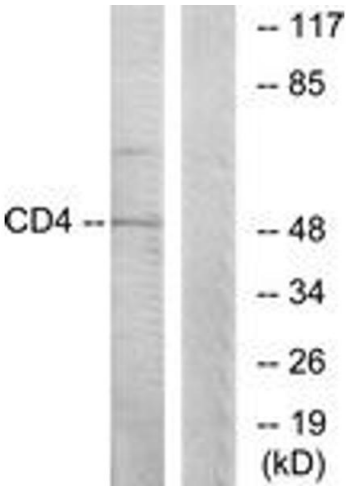
Application Notes:	WB: 1:500~1:1000 IHC: 1:50~1:100 IF: 1:100~1:500 ELISA: 1:1000
Comment:	Unigene-Number: Hs.631659 (NCBI Gene Symbol: CD4)
Restrictions:	For Research Use only

Handling

Format:	Liquid
Concentration:	1 mg/mL
Buffer:	phosphate buffered saline (without Mg ²⁺ and Ca ²⁺), pH 7.4, 150 mM NaCl, 0.02 % sodium azide and 50 % glycerol.
Preservative:	Sodium azide
Precaution of Use:	This product contains sodium azide: a POISONOUS AND HAZARDOUS SUBSTANCE which should be handled by trained staff only.
Storage:	-20 °C
Storage Comment:	Stable at -20°C for at least 1 year.
Expiry Date:	12 months

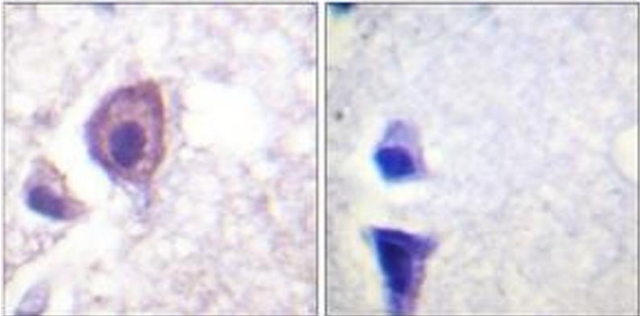
Publications

Product cited in:	Yamada, Yamaguchi, Asano, Fujita, Kobayashi, Kasai: "Th17-cells in atopic dermatitis stimulate orthodontic root resorption." in: Oral diseases , (2013) (PubMed).
-------------------	--



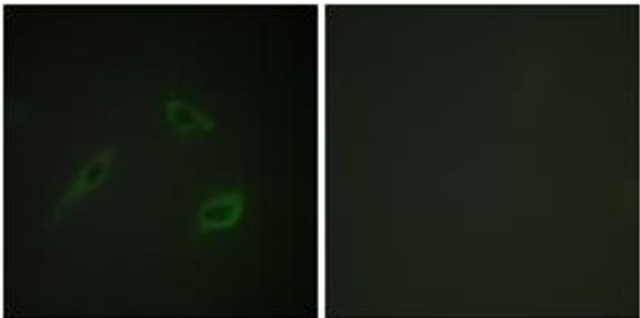
Western Blotting

Image 1. Western blot analysis of extracts from COLO205 cells, using CD4 (Ab-433) Antibody. The lane on the right is treated with the synthesized peptide.



Immunohistochemistry

Image 2. Immunohistochemistry analysis of paraffin-embedded human brain tissue, using CD4 (Ab-433) Antibody. The picture on the right is treated with the synthesized peptide.



Immunofluorescence

Image 3. Immunofluorescence analysis of HeLa cells, using CD4 (Ab-433) Antibody. The picture on the right is treated with the synthesized peptide.