

Datasheet for ABIN1532564
anti-C5AR1 antibody (AA 301-350)

3 Images

[Go to Product page](#)

Overview

Quantity:	100 µg
Target:	C5AR1
Binding Specificity:	AA 301-350
Reactivity:	Human
Host:	Rabbit
Clonality:	Polyclonal
Conjugate:	This C5AR1 antibody is un-conjugated
Application:	Western Blotting (WB), ELISA, Immunohistochemistry (IHC), Immunofluorescence (IF)

Product Details

Immunogen:	The antiserum was produced against synthesized peptide derived from human CD88/C5aR.
Isotype:	IgG
Specificity:	CD88/C5aR Antibody detects endogenous levels of total CD88/C5aR protein.
Purification:	The antibody was purified from rabbit antiserum by affinity-chromatography using immunogen.
Purity:	> 95 %

Target Details

Target:	C5AR1
Alternative Name:	CD88/C5aR (C5AR1 Products)
Background:	Synonyms: C5a anaphylatoxin chemotactic receptor, C5a-R, C5AR, C5AR1, C5R1, CD88 antigen

Target Details

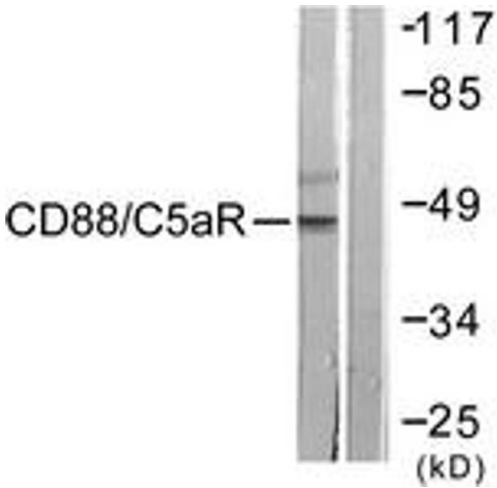
	NCBI Gene Symbol: C5AR1
Molecular Weight:	39 kDa
Gene ID:	728
OMIM:	113995
UniProt:	P21730
Pathways:	Complement System

Application Details

Application Notes:	WB: 1:500~1:1000 IHC: 1:50~1:100 IF: 1:100~1:500 ELISA: 1:5000
Comment:	Unigene-Number: Hs.2161 (NCBI Gene Symbol: C5AR1)
Restrictions:	For Research Use only

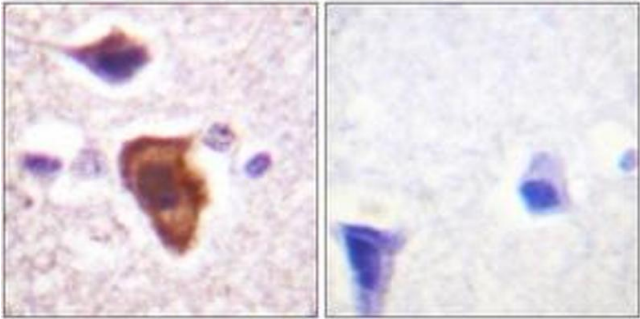
Handling

Format:	Liquid
Concentration:	1 mg/mL
Buffer:	phosphate buffered saline (without Mg ²⁺ and Ca ²⁺), pH 7.4, 150 mM NaCl, 0.02 % sodium azide and 50 % glycerol.
Preservative:	Sodium azide
Precaution of Use:	This product contains sodium azide: a POISONOUS AND HAZARDOUS SUBSTANCE which should be handled by trained staff only.
Storage:	-20 °C
Storage Comment:	Stable at -20°C for at least 1 year.
Expiry Date:	12 months



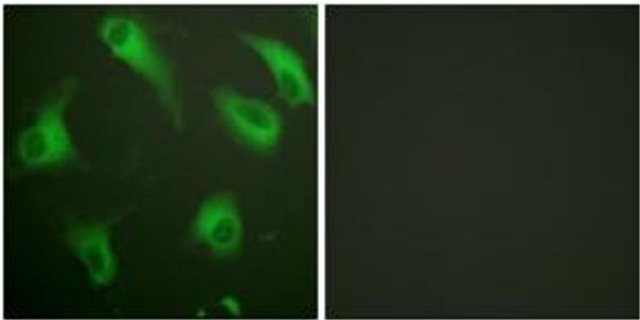
Western Blotting

Image 1. Western blot analysis of extracts from HeLa cells, treated with PMA 125ng/ml 30', using CD88/C5aR (Ab-338) Antibody. The lane on the right is treated with the synthesized peptide.



Immunohistochemistry

Image 2. Immunohistochemistry analysis of paraffin-embedded human brain tissue, using CD88/C5aR (Ab-338) Antibody. The picture on the right is treated with the synthesized peptide.



Immunofluorescence

Image 3. Immunofluorescence analysis of HeLa cells, using CD88/C5aR (Ab-338) Antibody. The picture on the right is treated with the synthesized peptide.