

Datasheet for ABIN1532580
anti-Cyclin E2 antibody (AA 355-404)

3 Images

[Go to Product page](#)

Overview

Quantity:	100 µg
Target:	Cyclin E2 (CCNE2)
Binding Specificity:	AA 355-404
Reactivity:	Human, Mouse
Host:	Rabbit
Clonality:	Polyclonal
Conjugate:	This Cyclin E2 antibody is un-conjugated
Application:	Western Blotting (WB), ELISA, Immunohistochemistry (IHC), Immunofluorescence (IF)

Product Details

Immunogen:	The antiserum was produced against synthesized peptide derived from human Cyclin E2.
Isotype:	IgG
Specificity:	Cyclin E2 Antibody detects endogenous levels of total Cyclin E2 protein.
Purification:	The antibody was purified from rabbit antiserum by affinity-chromatography using immunogen.
Purity:	> 95 %

Target Details

Target:	Cyclin E2 (CCNE2)
Alternative Name:	Cyclin E2 (CCNE2 Products)
Background:	Synonyms: CCNE2, CGE2, CYCE2, G1/S-Specific cyclin E2

Target Details

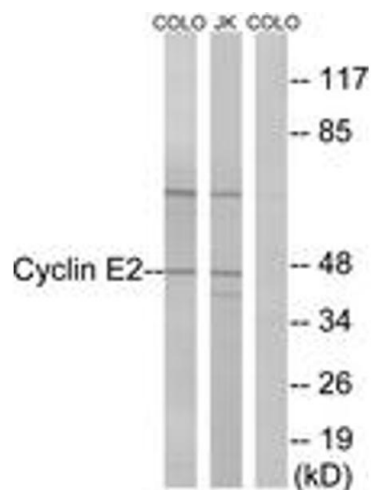
	NCBI Gene Symbol: CCNE2
Molecular Weight:	46 kDa
Gene ID:	9134
OMIM:	603775
UniProt:	O96020
Pathways:	Cell Division Cycle, Mitotic G1-G1/S Phases

Application Details

Application Notes:	WB: 1:500~1:1000 IHC: 1:50~1:100 IF: 1:100~1:500 ELISA: 1:10000
Comment:	Unigene-Number: Hs.567387 (NCBI Gene Symbol: CCNE2)
Restrictions:	For Research Use only

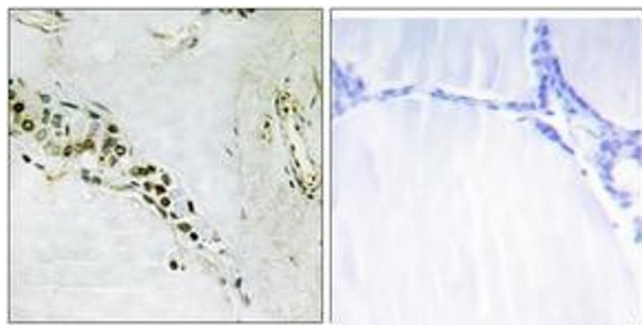
Handling

Format:	Liquid
Concentration:	1 mg/mL
Buffer:	phosphate buffered saline (without Mg ²⁺ and Ca ²⁺), pH 7.4, 150 mM NaCl, 0.02 % sodium azide and 50 % glycerol.
Preservative:	Sodium azide
Precaution of Use:	This product contains sodium azide: a POISONOUS AND HAZARDOUS SUBSTANCE which should be handled by trained staff only.
Storage:	-20 °C
Storage Comment:	Stable at -20°C for at least 1 year.
Expiry Date:	12 months



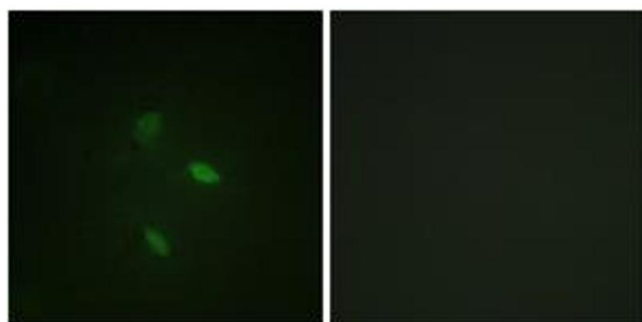
Western Blotting

Image 1. Western blot analysis of extracts from COLO/Jurkat cells, using Cyclin E2 (Ab-392) Antibody. The lane on the right is treated with the synthesized peptide.



Immunohistochemistry

Image 2. Immunohistochemistry analysis of paraffin-embedded human thyroid gland tissue, using Cyclin E2 (Ab-392) Antibody. The picture on the right is treated with the synthesized peptide.



Immunofluorescence

Image 3. Immunofluorescence analysis of NIH-3T3 cells, using Cyclin E2 (Ab-392) Antibody. The picture on the right is treated with the synthesized peptide.