

Datasheet for ABIN1532581
anti-Cyclin H antibody (AA 274-323)

3 Images

[Go to Product page](#)

Overview

Quantity:	100 µg
Target:	Cyclin H (CCNH)
Binding Specificity:	AA 274-323
Reactivity:	Human, Mouse, Rat
Host:	Rabbit
Clonality:	Polyclonal
Conjugate:	This Cyclin H antibody is un-conjugated
Application:	Western Blotting (WB), ELISA, Immunohistochemistry (IHC), Immunofluorescence (IF)

Product Details

Immunogen:	The antiserum was produced against synthesized peptide derived from human Cyclin H.
Isotype:	IgG
Specificity:	Cyclin H Antibody detects endogenous levels of total Cyclin H protein.
Purification:	The antibody was purified from rabbit antiserum by affinity-chromatography using immunogen.
Purity:	> 95 %

Target Details

Target:	Cyclin H (CCNH)
Alternative Name:	Cyclin H (CCNH Products)
Background:	Synonyms: CCNH, MO15-associated protein, p34, p37

Target Details

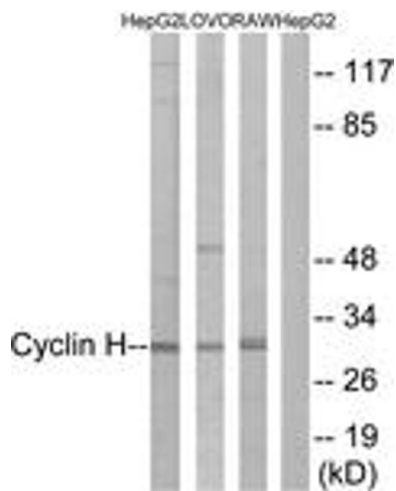
	NCBI Gene Symbol: CCNH
Molecular Weight:	37 kDa
Gene ID:	902
OMIM:	601953
UniProt:	P51946
Pathways:	Cell Division Cycle , Mitotic G1-G1/S Phases , M Phase

Application Details

Application Notes:	WB: 1:500~1:1000 IHC: 1:50~1:100 IF: 1:100~1:500 ELISA: 1:20000
Comment:	Unigene-Number: Hs.292524 (NCBI Gene Symbol: CCNH)
Restrictions:	For Research Use only

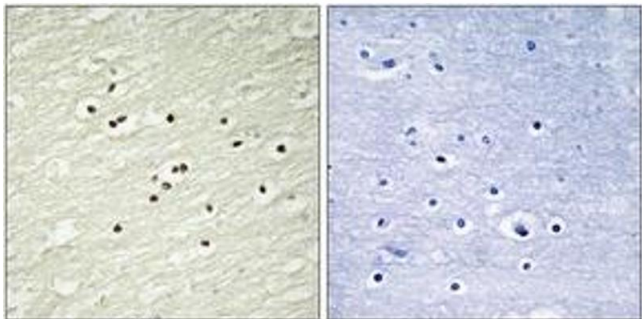
Handling

Format:	Liquid
Concentration:	1 mg/mL
Buffer:	phosphate buffered saline (without Mg ²⁺ and Ca ²⁺), pH 7.4, 150 mM NaCl, 0.02 % sodium azide and 50 % glycerol.
Preservative:	Sodium azide
Precaution of Use:	This product contains sodium azide: a POISONOUS AND HAZARDOUS SUBSTANCE which should be handled by trained staff only.
Storage:	-20 °C
Storage Comment:	Stable at -20°C for at least 1 year.
Expiry Date:	12 months



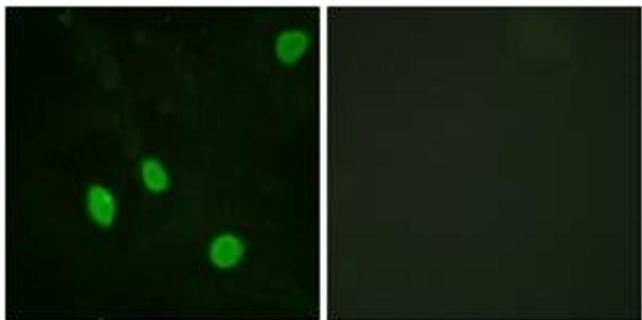
Western Blotting

Image 1. Western blot analysis of extracts from HepG2/LOVO/RAW264.7 cells, using Cyclin H (Ab-315) Antibody. The lane on the right is treated with the synthesized peptide.



Immunohistochemistry

Image 2. Immunohistochemistry analysis of paraffin-embedded human brain tissue, using Cyclin H (Ab-315) Antibody. The picture on the right is treated with the synthesized peptide.



Immunofluorescence

Image 3. Immunofluorescence analysis of HeLa cells, using Cyclin H (Ab-315) Antibody. The picture on the right is treated with the synthesized peptide.