

Datasheet for ABIN1532604
anti-EPHB1/2 antibody (AA 561-610)



[Go to Product page](#)

3 Images

Overview

Quantity:	100 µL
Target:	EPHB1/2
Binding Specificity:	AA 561-610
Reactivity:	Human, Mouse, Rat
Host:	Rabbit
Clonality:	Polyclonal
Conjugate:	This EPHB1/2 antibody is un-conjugated
Application:	Immunofluorescence (IF), Western Blotting (WB), ELISA, Immunohistochemistry (IHC)

Product Details

Immunogen:	The antiserum was produced against synthesized peptide derived from human EPHB1/2.
Isotype:	IgG
Specificity:	EPHB1/2 Antibody detects endogenous levels of total EPHB1/2 protein.
Purification:	The antibody was purified from rabbit antiserum by affinity-chromatography using immunogen.
Purity:	> 95 %

Target Details

Target:	EPHB1/2
Alternative Name:	EPHB1/2 (EPHB1/2 Products)
Background:	Synonyms: ELK, EPB1, EPHT2, EPTH2, Eph receptor B1, Ephrin type-B receptor 1 precursor,

Target Details

HEK6, NET, Tyrosine-protein kinase receptor EPH-2, kinase EphB1
NCBI Gene Symbol: EPHB1

Molecular Weight: 109 kDa

Gene ID: 2047, 1969

OMIM: 600600

UniProt: [P54762](#), [P29317](#)

Application Details

Application Notes: WB: 1:500~1:1000 IHC: 1:50~1:100 IF: 1:100~1:500 ELISA: 1:40000

Comment: Unigene-Number: Hs.116092, Hs.171596 (NCBI Gene Symbol: EPHB1)

Restrictions: For Research Use only

Handling

Format: Liquid

Concentration: 1 mg/mL

Buffer: phosphate buffered saline (without Mg²⁺ and Ca²⁺), pH 7.4, 150 mM NaCl, 0.02 % sodium azide and 50 % glycerol.

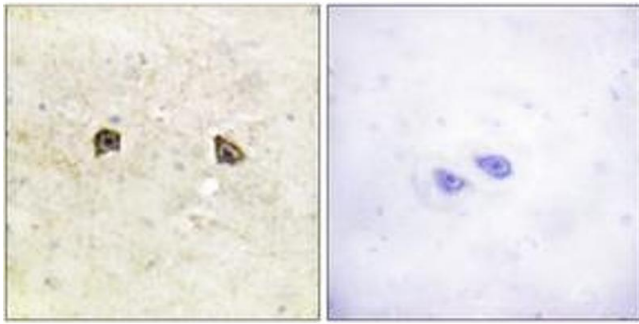
Preservative: Sodium azide

Precaution of Use: This product contains sodium azide: a POISONOUS AND HAZARDOUS SUBSTANCE which should be handled by trained staff only.

Storage: -20 °C

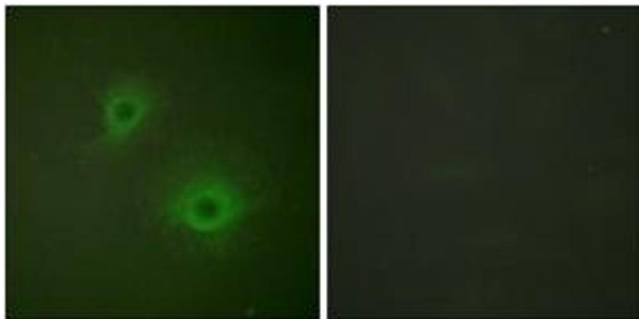
Storage Comment: Stable at -20°C for at least 1 year.

Expiry Date: 12 months



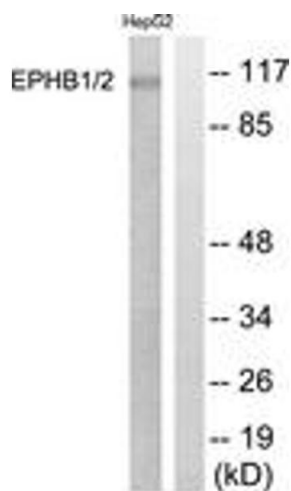
Immunohistochemistry

Image 1. Immunohistochemistry analysis of paraffin-embedded human brain tissue, using EPHB1/2 (Ab-594/604) Antibody. The picture on the right is treated with the synthesized peptide.



Immunofluorescence

Image 2. Immunofluorescence analysis of HuvEc cells, using EPHB1/2 (Ab-594/604) Antibody. The picture on the right is treated with the synthesized peptide.



Western Blotting

Image 3. Western blot analysis of extracts from HepG2 cells, using EPHB1/2 (Ab-594/604) Antibody. The lane on the right is treated with the synthesized peptide.