



[Go to Product page](#)

Datasheet for ABIN1532629

## anti-Histone H1 antibody (AA 1-50)

### 3 Images

#### Overview

Quantity:	100 µg
Target:	Histone H1
Binding Specificity:	AA 1-50
Reactivity:	Human, Mouse
Host:	Rabbit
Clonality:	Polyclonal
Conjugate:	This Histone H1 antibody is un-conjugated
Application:	Immunofluorescence (IF), Immunohistochemistry (IHC), Western Blotting (WB), ELISA

#### Product Details

Immunogen:	The antiserum was produced against synthesized peptide derived from human Histone H1.
Isotype:	IgG
Specificity:	Histone H1 Antibody detects endogenous levels of total Histone H1 protein.
Purification:	The antibody was purified from rabbit antiserum by affinity-chromatography using immunogen.
Purity:	> 95 %

#### Target Details

Target:	Histone H1
Abstract:	<a href="#">Histone H1 Products</a>
Background:	Synonyms: Histone H1.5, Histone H1a, HIST1H1B, H1F5, Histone H1.3, Histone H1c ,

## Target Details

---

HIST1H1D , H1F3, Histone H1.4, Histone H1b , HIST1H1E, H1F4  
NCBI Gene Symbol: HIST1H1B

Molecular Weight: 22 kDa

Gene ID: 3009, 3007, 3008

OMIM: 142711

UniProt: [P16401](#), [P16402](#), [P10412](#)

## Application Details

---

Application Notes: WB: 1:500~1:1000 IHC: 1:50~1:100 IF: 1:100~1:500 ELISA: 1:1000

Comment: Unigene-Number: Hs.131956, Hs.136857, Hs.248133 (NCBI Gene Symbol: HIST1H1B)

Restrictions: For Research Use only

## Handling

---

Format: Liquid

Concentration: 1 mg/mL

Buffer: phosphate buffered saline (without Mg<sup>2+</sup> and Ca<sup>2+</sup>), pH 7.4, 150 mM NaCl, 0.02 % sodium azide and 50 % glycerol.

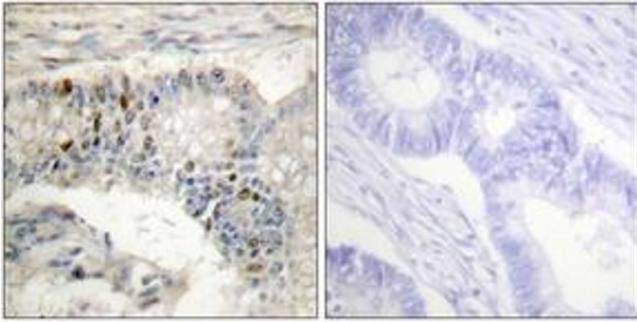
Preservative: Sodium azide

Precaution of Use: This product contains sodium azide: a POISONOUS AND HAZARDOUS SUBSTANCE which should be handled by trained staff only.

Storage: -20 °C

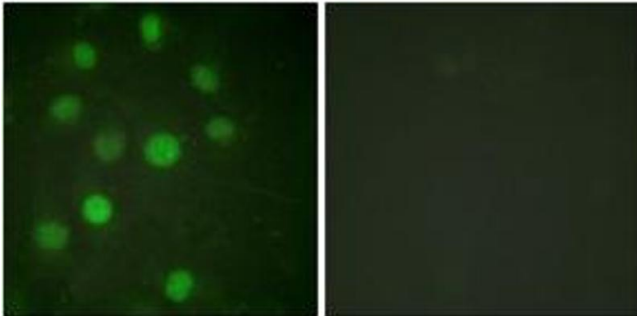
Storage Comment: Stable at -20°C for at least 1 year.

Expiry Date: 12 months



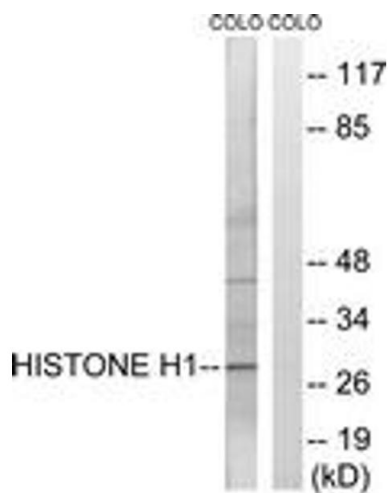
### Immunohistochemistry

**Image 1.** Immunohistochemistry analysis of paraffin-embedded human colon carcinoma tissue, using Histone H1 (Ab-17) Antibody. The picture on the right is treated with the synthesized peptide.



### Immunofluorescence

**Image 2.** Immunofluorescence analysis of HuvEc cells, using Histone H1 (Ab-17) Antibody. The picture on the right is treated with the synthesized peptide.



### Western Blotting

**Image 3.** Western blot analysis of extracts from COLO cells, using Histone H1 (Ab-17) Antibody. The lane on the right is treated with the synthesized peptide.