

Datasheet for ABIN1532632
anti-IFNGR1 antibody (AA 431-480)[Go to Product page](#)

3 Images

Overview

Quantity:	100 µg
Target:	IFNGR1
Binding Specificity:	AA 431-480
Reactivity:	Human, Mouse, Rat
Host:	Rabbit
Clonality:	Polyclonal
Conjugate:	This IFNGR1 antibody is un-conjugated
Application:	Western Blotting (WB), ELISA, Immunohistochemistry (IHC), Immunofluorescence (IF)

Product Details

Immunogen:	The antiserum was produced against synthesized peptide derived from human Interferon-gamma Receptor alpha chain.
Isotype:	IgG
Specificity:	Interferon-gamma Receptor alpha chain Antibody detects endogenous levels of total Interferon-gamma Receptor alpha chain protein.
Purification:	The antibody was purified from rabbit antiserum by affinity-chromatography using immunogen.
Purity:	> 95 %

Target Details

Target:	IFNGR1
---------	--------

Target Details

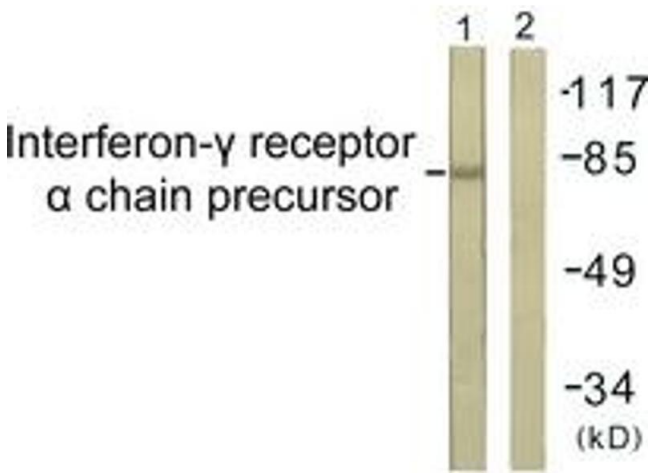
Alternative Name:	Interferon-gamma Receptor alpha Chain (IFNGR1 Products)
Background:	Synonyms: CD119 antigen, CDw119, IFN-gamma-R1, INGR, INGR1, Interferon-gamma receptor alpha chain precursor NCBI Gene Symbol: INGR1
Molecular Weight:	54 kDa
Gene ID:	3459
OMIM:	107470
UniProt:	P15260
Pathways:	Interferon-gamma Pathway

Application Details

Application Notes:	WB: 1:500~1:1000 IHC: 1:50~1:100 IF: 1:100~1:500 ELISA: 1:40000
Comment:	Unigene-Number: Hs.520414 (NCBI Gene Symbol: INGR1)
Restrictions:	For Research Use only

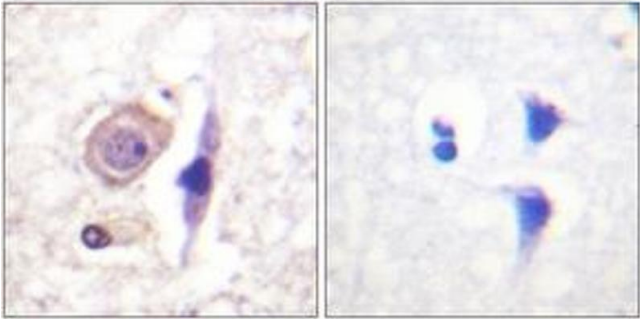
Handling

Format:	Liquid
Concentration:	1 mg/mL
Buffer:	phosphate buffered saline (without Mg2+ and Ca2+), pH 7.4, 150 mM NaCl, 0.02 % sodium azide and 50 % glycerol.
Preservative:	Sodium azide
Precaution of Use:	This product contains sodium azide: a POISONOUS AND HAZARDOUS SUBSTANCE which should be handled by trained staff only.
Storage:	-20 °C
Storage Comment:	Stable at -20°C for at least 1 year.
Expiry Date:	12 months



Western Blotting

Image 1. Western blot analysis of extracts from COS7 cells, using Interferon-gamma Receptor alpha chain (Ab-457) Antibody. The lane on the right is treated with the synthesized peptide.



Immunohistochemistry

Image 2. Immunohistochemistry analysis of paraffin-embedded human brain tissue, using Interferon-gamma Receptor alpha chain (Ab-457) Antibody. The picture on the right is treated with the synthesized peptide.



Immunofluorescence

Image 3. Immunofluorescence analysis of HepG2 cells, using Interferon-gamma Receptor alpha chain (Ab-457) Antibody. The picture on the right is treated with the synthesized peptide.