

Datasheet for ABIN1532633
anti-MAPK8IP1 antibody (AA 69-118)

3 Images

[Go to Product page](#)

Overview

Quantity:	100 µg
Target:	MAPK8IP1
Binding Specificity:	AA 69-118
Reactivity:	Human, Rat, Mouse
Host:	Rabbit
Clonality:	Polyclonal
Conjugate:	This MAPK8IP1 antibody is un-conjugated
Application:	Western Blotting (WB), ELISA, Immunofluorescence (IF), Immunohistochemistry (IHC)

Product Details

Immunogen:	The antiserum was produced against synthesized peptide derived from human JIP1.
Isotype:	IgG
Specificity:	JIP1 Antibody detects endogenous levels of total JIP1 protein.
Purification:	The antibody was purified from rabbit antiserum by affinity-chromatography using immunogen.
Purity:	> 95 %

Target Details

Target:	MAPK8IP1
Alternative Name:	JIP1 (MAPK8IP1 Products)
Background:	Synonyms: C-jun-amino-terminal kinase interacting protein 1, IB-1, IB1, Islet-brain-1, JIP-1, JIP-1

Target Details

related protein, JNK MAP kinase scaffold protein 1, JNK-interacting protein 1, JRP, MAPK8IP, MAPK8IP1, Mitogen-activated protein kinase 8-interacting protein 1, PRKM
NCBI Gene Symbol: MAPK8IP1

Molecular Weight: 77 kDa

Gene ID: 9479

OMIM: 125853

UniProt: [Q9UQF2](#)

Application Details

Application Notes: WB: 1:500~1:1000 IHC: 1:50~1:100 IF: 1:100~1:500 ELISA: 1:5000

Comment: Unigene-Number: Hs.234249 (NCBI Gene Symbol: MAPK8IP1)

Restrictions: For Research Use only

Handling

Format: Liquid

Concentration: 1 mg/mL

Buffer: phosphate buffered saline (without Mg²⁺ and Ca²⁺), pH 7.4, 150 mM NaCl, 0.02 % sodium azide and 50 % glycerol.

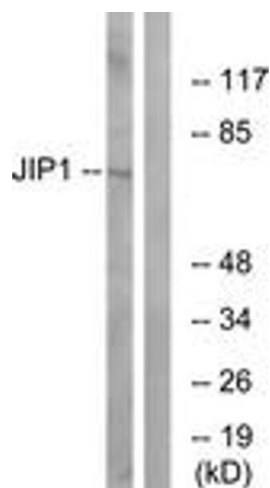
Preservative: Sodium azide

Precaution of Use: This product contains sodium azide: a POISONOUS AND HAZARDOUS SUBSTANCE which should be handled by trained staff only.

Storage: -20 °C

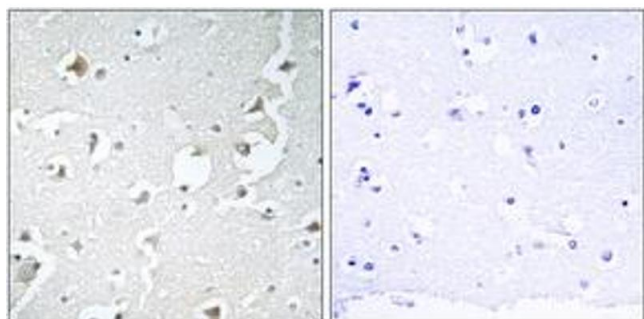
Storage Comment: Stable at -20°C for at least 1 year.

Expiry Date: 12 months



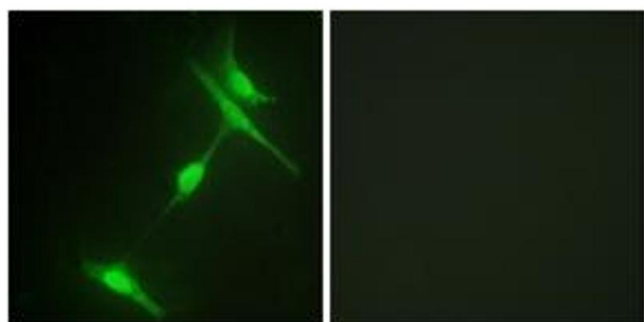
Western Blotting

Image 1. Western blot analysis of extracts from COLO205 cells, treated with Serum 20% 15', using JIP1 (Ab-103) Antibody. The lane on the right is treated with the synthesized peptide.



Immunohistochemistry

Image 2. Immunohistochemistry analysis of paraffin-embedded human brain tissue, using JIP1 (Ab-103) Antibody. The picture on the right is treated with the synthesized peptide.



Immunofluorescence

Image 3. Immunofluorescence analysis of NIH-3T3 cells, using JIP1 (Ab-103) Antibody. The picture on the right is treated with the synthesized peptide.