

Datasheet for ABIN1532641

anti-PDGFRB antibody (AA 991-1040)



[Go to Product page](#)

3 Images

Overview

Quantity:	100 µL
Target:	PDGFRB
Binding Specificity:	AA 991-1040
Reactivity:	Human, Mouse, Rat
Host:	Rabbit
Clonality:	Polyclonal
Conjugate:	This PDGFRB antibody is un-conjugated
Application:	Western Blotting (WB), ELISA, Immunohistochemistry (IHC), Immunofluorescence (IF)

Product Details

Immunogen:	The antiserum was produced against synthesized peptide derived from human PDGFR beta.
Isotype:	IgG
Specificity:	PDGFR beta Antibody detects endogenous levels of total PDGFR beta protein.
Purification:	The antibody was purified from rabbit antiserum by affinity-chromatography using immunogen.
Purity:	> 95 %

Target Details

Target:	PDGFRB
Alternative Name:	PDGFR beta (PDGFRB Products)
Background:	Synonyms: CD140b, kinase PDGFR-beta, PDGF-R-beta, PDGFR, PDGFR-beta, PGFRB, platelet-

Target Details

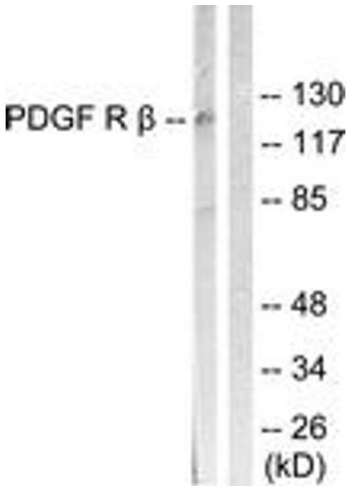
	derived growth factor receptor, beta polypeptide NCBI Gene Symbol: PDGFRB
Molecular Weight:	123 kDa
Gene ID:	5159
OMIM:	173410
UniProt:	P09619
Pathways:	Fc-epsilon Receptor Signaling Pathway , EGFR Signaling Pathway , Neurotrophin Signaling Pathway , Inositol Metabolic Process , Glycosaminoglycan Metabolic Process , Smooth Muscle Cell Migration , Platelet-derived growth Factor Receptor Signaling

Application Details

Application Notes:	WB: 1:500~1:1000 IHC: 1:50~1:100 IF: 1:100~1:500 ELISA: 1:1000
Comment:	Unigene-Number: Hs.509067 (NCBI Gene Symbol: PDGFRB)
Restrictions:	For Research Use only

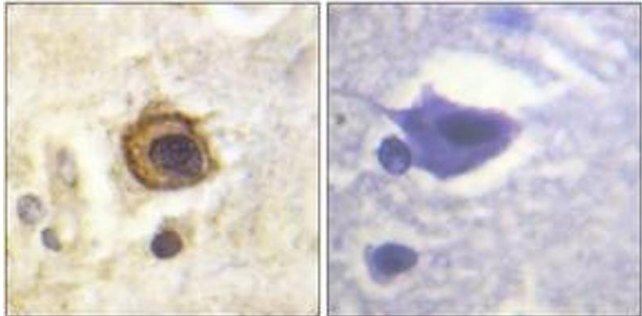
Handling

Format:	Liquid
Concentration:	1 mg/mL
Buffer:	phosphate buffered saline (without Mg ²⁺ and Ca ²⁺), pH 7.4, 150 mM NaCl, 0.02 % sodium azide and 50 % glycerol.
Preservative:	Sodium azide
Precaution of Use:	This product contains sodium azide: a POISONOUS AND HAZARDOUS SUBSTANCE which should be handled by trained staff only.
Storage:	-20 °C
Storage Comment:	Stable at -20°C for at least 1 year.
Expiry Date:	12 months



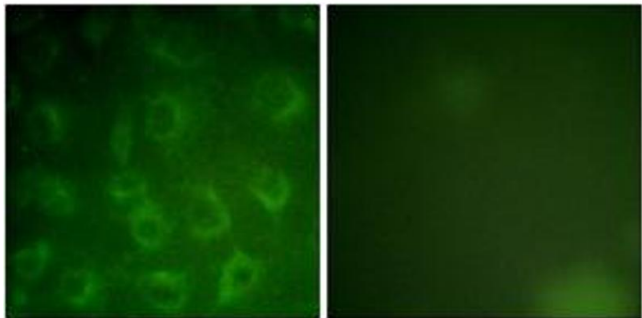
Western Blotting

Image 1. Western blot analysis of extracts from LOVO cells, treated with H₂O₂ 100uM 30', using PDGFR beta (Ab-1021) Antibody. The lane on the right is treated with the synthesized peptide.



Immunohistochemistry

Image 2. Immunohistochemistry analysis of paraffin-embedded human brain tissue, using PDGFR beta (Ab-1021) Antibody. The picture on the right is treated with the synthesized peptide.



Immunofluorescence

Image 3. Immunofluorescence analysis of COS7 cells, using PDGFR beta (Ab-1021) Antibody. The picture on the right is treated with the synthesized peptide.