



[Go to Product page](#)

Datasheet for ABIN1532644

anti-Retinoblastoma Protein (Rb) antibody (AA 211-260)

2 Images

Overview

Quantity:	100 µg
Target:	Retinoblastoma Protein (Rb) (Rb Protein)
Binding Specificity:	AA 211-260
Reactivity:	Human, Mouse, Rat
Host:	Rabbit
Clonality:	Polyclonal
Conjugate:	This Retinoblastoma Protein (Rb) antibody is un-conjugated
Application:	ELISA, Immunohistochemistry (IHC), Immunofluorescence (IF)

Product Details

Immunogen:	The antiserum was produced against synthesized peptide derived from human Retinoblastoma.
Isotype:	IgG
Specificity:	Retinoblastoma Antibody detects endogenous levels of total Retinoblastoma protein.
Purification:	The antibody was purified from rabbit antiserum by affinity-chromatography using immunogen.
Purity:	> 95 %

Target Details

Target: Retinoblastoma Protein (Rb) (Rb Protein)

Abstract: [Rb Protein Products](#)

Target Details

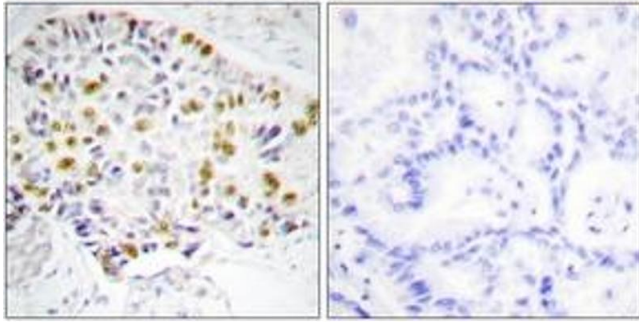
Background:	Synonyms: P105-RB, PP105, PP110, RB-1, RB1, retinoblastoma gene, Retinoblastoma-associated protein NCBI Gene Symbol: RB1
Molecular Weight:	106 kDa
Gene ID:	5925
OMIM:	109800
UniProt:	P06400
Pathways:	Mitotic G1-G1/S Phases

Application Details

Application Notes:	IHC: 1:50~1:100 IF: 1:100~1:500 ELISA: 1:5000
Comment:	Unigene-Number: Hs.408528 (NCBI Gene Symbol: RB1)
Restrictions:	For Research Use only

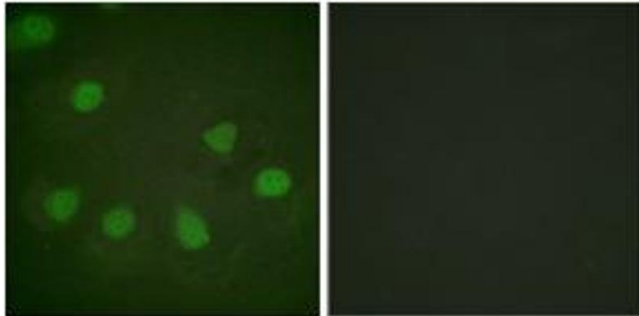
Handling

Format:	Liquid
Concentration:	1 mg/mL
Buffer:	phosphate buffered saline (without Mg ²⁺ and Ca ²⁺), pH 7.4, 150 mM NaCl, 0.02 % sodium azide and 50 % glycerol.
Preservative:	Sodium azide
Precaution of Use:	This product contains sodium azide: a POISONOUS AND HAZARDOUS SUBSTANCE which should be handled by trained staff only.
Storage:	-20 °C
Storage Comment:	Stable at -20°C for at least 1 year.
Expiry Date:	12 months



Immunohistochemistry

Image 1. Immunohistochemistry analysis of paraffin-embedded human lung carcinoma tissue, using Retinoblastoma (Ab-249) Antibody. The picture on the right is treated with the synthesized peptide.



Immunofluorescence

Image 2. Immunofluorescence analysis of HeLa cells, using Retinoblastoma (Ab-249) Antibody. The picture on the right is treated with the synthesized peptide.