

Datasheet for ABIN1532646  
**anti-RPA2 antibody (AA 10-59)**



[Go to Product page](#)

3 Images

## Overview

Quantity:	100 µL
Target:	RPA2
Binding Specificity:	AA 10-59
Reactivity:	Human, Mouse
Host:	Rabbit
Clonality:	Polyclonal
Conjugate:	This RPA2 antibody is un-conjugated
Application:	Western Blotting (WB), Immunohistochemistry (IHC), ELISA, Immunofluorescence (IF)

## Product Details

Immunogen:	The antiserum was produced against synthesized peptide derived from human RFA2.
Isotype:	IgG
Specificity:	RFA2 Antibody detects endogenous levels of total RFA2 protein.
Purification:	The antibody was purified from rabbit antiserum by affinity-chromatography using immunogen.
Purity:	> 95 %

## Target Details

Target:	RPA2
Alternative Name:	RFA2 ( <a href="#">RPA2 Products</a> )
Background:	Synonyms: REPA2, replication factor-A protein 2, replication protein A 32 kDa subunit,

## Target Details

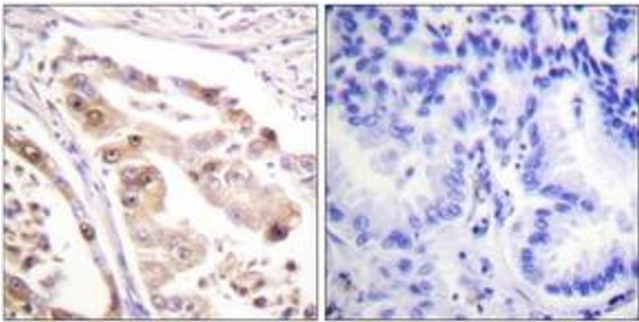
	replication protein A2, RF-A, RP-A, RPA2, RPA32 NCBI Gene Symbol: RFA2
Molecular Weight:	29 kDa
Gene ID:	6118
OMIM:	179836
UniProt:	<a href="#">P15927</a>
Pathways:	<a href="#">Telomere Maintenance</a> , <a href="#">DNA Damage Repair</a> , <a href="#">Mitotic G1-G1/S Phases</a> , <a href="#">DNA Replication</a> , <a href="#">Synthesis of DNA</a>

## Application Details

Application Notes:	WB: 1:500~1:1000 IHC: 1:50~1:100 IF: 1:100~1:500 ELISA: 1:1000
Comment:	Unigene-Number: Hs.703070, Hs.79411 (NCBI Gene Symbol: RFA2)
Restrictions:	For Research Use only

## Handling

Format:	Liquid
Concentration:	1 mg/mL
Buffer:	phosphate buffered saline (without Mg2+ and Ca2+), pH 7.4, 150 mM NaCl, 0.02 % sodium azide and 50 % glycerol.
Preservative:	Sodium azide
Precaution of Use:	This product contains sodium azide: a POISONOUS AND HAZARDOUS SUBSTANCE which should be handled by trained staff only.
Storage:	-20 °C
Storage Comment:	Stable at -20°C for at least 1 year.
Expiry Date:	12 months



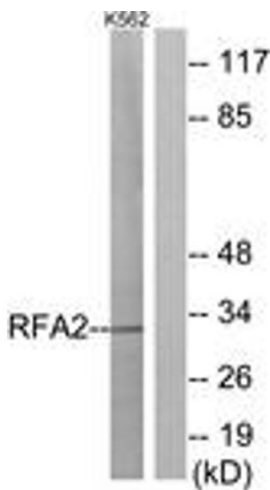
Immunohistochemistry

**Image 1.** Immunohistochemistry analysis of paraffin-embedded human lung carcinoma tissue, using RFA2 (Ab-21) Antibody. The picture on the right is treated with the synthesized peptide.



Immunofluorescence

**Image 2.** Immunofluorescence analysis of HeLa cells, using RFA2 (Ab-21) Antibody. The picture on the right is treated with the synthesized peptide.



Western Blotting

**Image 3.** Western blot analysis of extracts from K562 cells, using RFA2 (Ab-21) Antibody. The lane on the right is treated with the synthesized peptide.