

Datasheet for ABIN1532659

anti-Tryptophan Hydroxylase 1 antibody (AA 26-75)**3** Images[Go to Product page](#)

Overview

Quantity:	100 µg
Target:	Tryptophan Hydroxylase 1 (TPH1)
Binding Specificity:	AA 26-75
Reactivity:	Human, Mouse, Rat
Host:	Rabbit
Clonality:	Polyclonal
Conjugate:	This Tryptophan Hydroxylase 1 antibody is un-conjugated
Application:	Western Blotting (WB), ELISA, Immunohistochemistry (IHC), Immunofluorescence (IF)

Product Details

Immunogen:	The antiserum was produced against synthesized peptide derived from human Tryptophan Hydroxylase.
Isotype:	IgG
Specificity:	Tryptophan Hydroxylase Antibody detects endogenous levels of total Tryptophan Hydroxylase protein.
Purification:	The antibody was purified from rabbit antiserum by affinity-chromatography using immunogen.
Purity:	> 95 %

Target Details

Target:	Tryptophan Hydroxylase 1 (TPH1)
---------	---------------------------------

Target Details

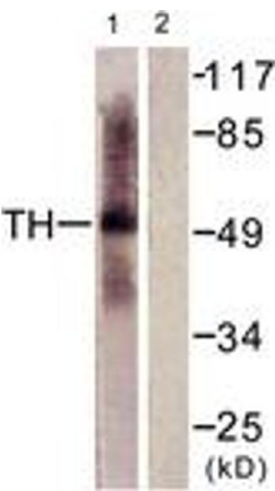
Alternative Name:	Tryptophan Hydroxylase (TPH1 Products)
Background:	Synonyms: TPH, TRPH, tryptophan 5-hydroxylase 1, tryptophan 5-monooxygenase 1 NCBI Gene Symbol: TPH1
Molecular Weight:	50 kDa
Gene ID:	7166
OMIM:	191060
UniProt:	P17752
Pathways:	Feeding Behaviour

Application Details

Application Notes:	WB: 1:500~1:1000 IHC: 1:50~1:100 IF: 1:100~1:500 ELISA: 1:20000
Comment:	Unigene-Number: Hs.591999 (NCBI Gene Symbol: TPH1)
Restrictions:	For Research Use only

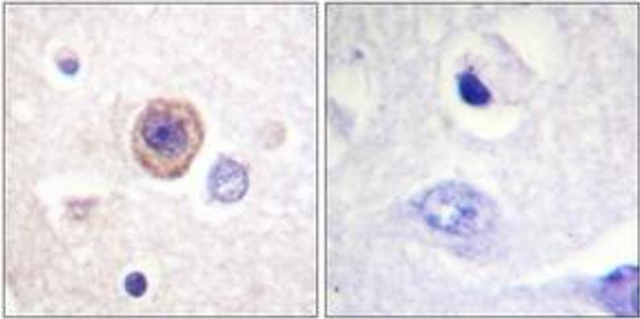
Handling

Format:	Liquid
Concentration:	1 mg/mL
Buffer:	phosphate buffered saline (without Mg ²⁺ and Ca ²⁺), pH 7.4, 150 mM NaCl, 0.02 % sodium azide and 50 % glycerol.
Preservative:	Sodium azide
Precaution of Use:	This product contains sodium azide: a POISONOUS AND HAZARDOUS SUBSTANCE which should be handled by trained staff only.
Storage:	-20 °C
Storage Comment:	Stable at -20°C for at least 1 year.
Expiry Date:	12 months



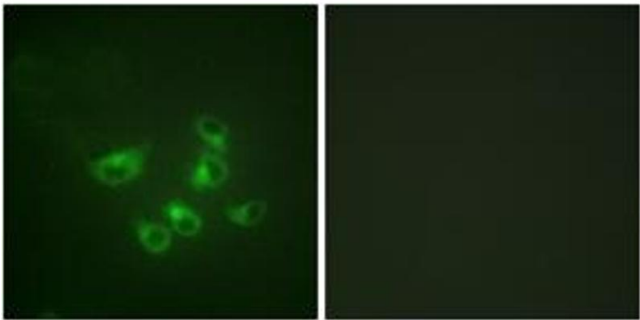
Western Blotting

Image 1. Western blot analysis of extracts from HepG2 cells, using Tryptophan Hydroxylase (Ab-58) Antibody. The lane on the right is treated with the synthesized peptide.



Immunohistochemistry

Image 2. Immunohistochemistry analysis of paraffin-embedded human brain tissue, using Tryptophan Hydroxylase (Ab-58) Antibody. The picture on the right is treated with the synthesized peptide.



Immunofluorescence

Image 3. Immunofluorescence analysis of HepG2 cells, using Tryptophan Hydroxylase (Ab-58) Antibody. The picture on the right is treated with the synthesized peptide.