

Datasheet for ABIN1532670
anti-GRB10 antibody (AA 33-82)

3 Images

[Go to Product page](#)

Overview

| | |
|----------------------|---|
| Quantity: | 100 µg |
| Target: | GRB10 |
| Binding Specificity: | AA 33-82 |
| Reactivity: | Human |
| Host: | Rabbit |
| Clonality: | Polyclonal |
| Conjugate: | This GRB10 antibody is un-conjugated |
| Application: | Western Blotting (WB), ELISA, Immunofluorescence (IF), Immunohistochemistry (IHC) |

Product Details

| | |
|---------------|---|
| Immunogen: | The antiserum was produced against synthesized peptide derived from human GRB10. |
| Isotype: | IgG |
| Specificity: | GRB10 Antibody detects endogenous levels of total GRB10 protein. |
| Purification: | The antibody was purified from rabbit antiserum by affinity-chromatography using immunogen. |
| Purity: | > 95 % |

Target Details

| | |
|-------------------|--|
| Target: | GRB10 |
| Alternative Name: | GRB10 (GRB10 Products) |
| Background: | Synonyms: GRB10 adaptor protein, GRBIR, Growth factor receptor-bound protein 10, Insulin |

Target Details

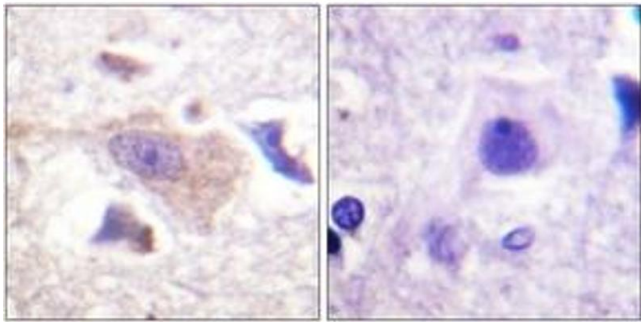
| | |
|-------------------|---|
| | receptor binding protein GRB-IR, KIAA0207 NCBI Gene Symbol: GRB10 |
| Molecular Weight: | 67 kDa |
| Gene ID: | 2887 |
| OMIM: | 601523 |
| UniProt: | Q13322 |
| Pathways: | Regulation of Carbohydrate Metabolic Process , Signaling Events mediated by VEGFR1 and VEGFR2 |

Application Details

| | |
|--------------------|--|
| Application Notes: | WB: 1:500~1:1000 IHC: 1:50~1:100 IF: 1:100~1:500 ELISA: 1:5000 |
| Comment: | Unigene-Number: Hs.164060 (NCBI Gene Symbol: GRB10) |
| Restrictions: | For Research Use only |

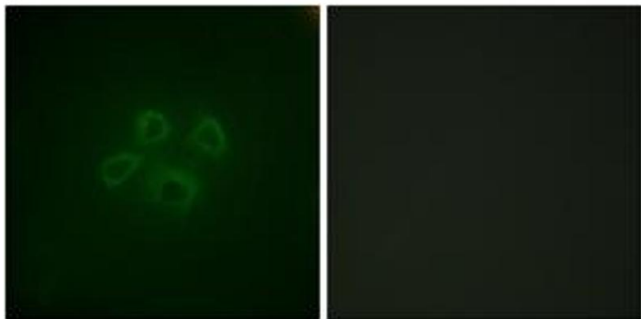
Handling

| | |
|--------------------|---|
| Format: | Liquid |
| Concentration: | 1 mg/mL |
| Buffer: | phosphate buffered saline (without Mg ²⁺ and Ca ²⁺), pH 7.4, 150 mM NaCl, 0.02 % sodium azide and 50 % glycerol. |
| Preservative: | Sodium azide |
| Precaution of Use: | This product contains sodium azide: a POISONOUS AND HAZARDOUS SUBSTANCE which should be handled by trained staff only. |
| Storage: | -20 °C |
| Storage Comment: | Stable at -20°C for at least 1 year. |
| Expiry Date: | 12 months |



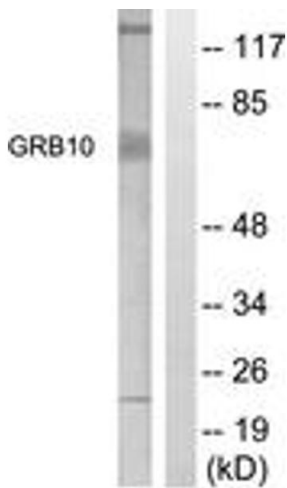
Immunohistochemistry

Image 1. Immunohistochemistry analysis of paraffin-embedded human brain tissue, using GRB10 (Ab-67) Antibody. The picture on the right is treated with the synthesized peptide.



Immunofluorescence

Image 2. Immunofluorescence analysis of HepG2 cells, using GRB10 (Ab-67) Antibody. The picture on the right is treated with the synthesized peptide.



Western Blotting

Image 3. Western blot analysis of extracts from NIH-3T3 cells, treated with Insulin 0.01U/ml 15', using GRB10 (Ab-67) Antibody. The lane on the right is treated with the synthesized peptide.