



[Go to Product page](#)

Datasheet for ABIN1532702
anti-KIF11 antibody (AA 892-941)

3 Images

Overview

Quantity:	100 µL
Target:	KIF11
Binding Specificity:	AA 892-941
Reactivity:	Human
Host:	Rabbit
Clonality:	Polyclonal
Conjugate:	This KIF11 antibody is un-conjugated
Application:	Western Blotting (WB), ELISA, Immunohistochemistry (IHC), Immunofluorescence (IF)

Product Details

Immunogen:	The antiserum was produced against synthesized peptide derived from human KIF11/Eg5.
Isotype:	IgG
Specificity:	KIF11/Eg5 Antibody detects endogenous levels of total KIF11/Eg5 protein.
Purification:	The antibody was purified from rabbit antiserum by affinity-chromatography using immunogen.
Purity:	> 95 %

Target Details

Target:	KIF11
Alternative Name:	KIF11/Eg5 (KIF11 Products)
Background:	Synonyms: Eg5, KIFL1, KNSL1, Kinesin-like protein 1, Kinesin-like protein KIF11, Kinesin-like

Target Details

spindle protein HKSP, Kinesin-related mitotic motor protein, Kinesin-related motor protein Eg5, TRIP5, Thyroid receptor interacting protein 5
NCBI Gene Symbol: KIF11

Molecular Weight: 119 kDa

Gene ID: 3832

OMIM: 148760

UniProt: [P52732](#)

Application Details

Application Notes: WB: 1:500~1:1000 IHC: 1:50~1:100 IF: 1:100~1:500 ELISA: 1:1000

Comment: Unigene-Number: Hs.8878 (NCBI Gene Symbol: KIF11)

Restrictions: For Research Use only

Handling

Format: Liquid

Concentration: 1 mg/mL

Buffer: phosphate buffered saline (without Mg²⁺ and Ca²⁺), pH 7.4, 150 mM NaCl, 0.02 % sodium azide and 50 % glycerol.

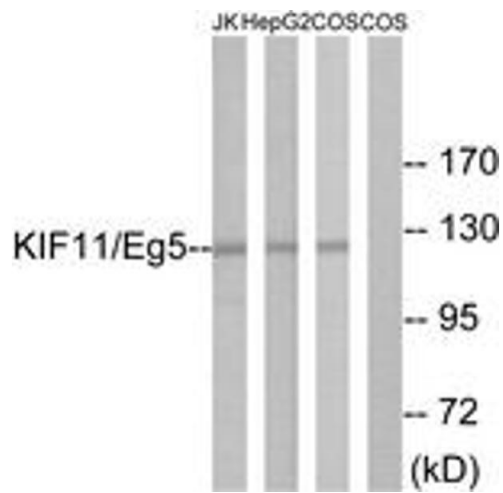
Preservative: Sodium azide

Precaution of Use: This product contains sodium azide: a POISONOUS AND HAZARDOUS SUBSTANCE which should be handled by trained staff only.

Storage: -20 °C

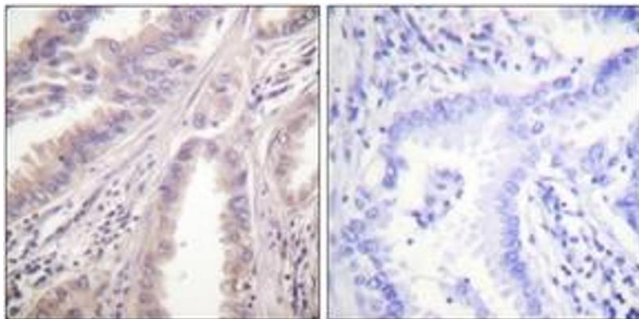
Storage Comment: Stable at -20°C for at least 1 year.

Expiry Date: 12 months



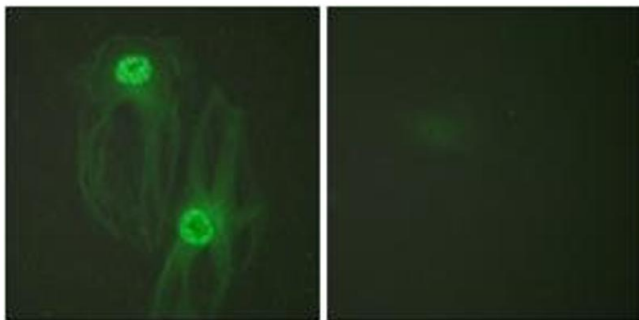
Western Blotting

Image 1. Western blot analysis of extracts from Jurkat/HepG2/COS cells, using KIF11/Eg5 (Ab-927) Antibody. The lane on the right is treated with the synthesized peptide.



Immunohistochemistry

Image 2. Immunohistochemistry analysis of paraffin-embedded human lung carcinoma tissue, using KIF11/Eg5 (Ab-927) Antibody. The picture on the right is treated with the synthesized peptide.



Immunofluorescence

Image 3. Immunofluorescence analysis of HeLa cells, using KIF11/Eg5 (Ab-927) Antibody. The picture on the right is treated with the synthesized peptide.