



Datasheet for ABIN1532703  
**anti-KIF20A antibody (AA 501-550)**



[Go to Product page](#)

3 Images

Overview

Quantity:	100 µL
Target:	KIF20A
Binding Specificity:	AA 501-550
Reactivity:	Human
Host:	Rabbit
Clonality:	Polyclonal
Conjugate:	This KIF20A antibody is un-conjugated
Application:	Western Blotting (WB), ELISA, Immunohistochemistry (IHC), Immunofluorescence (IF)

Product Details

Immunogen:	The antiserum was produced against synthesized peptide derived from human KIF20A.
Isotype:	IgG
Specificity:	KIF20A Antibody detects endogenous levels of total KIF20A protein.
Purification:	The antibody was purified from rabbit antiserum by affinity-chromatography using immunogen.
Purity:	> 95 %

Target Details

Target:	KIF20A
Alternative Name:	KIF20A ( <a href="#">KIF20A Products</a> )
Background:	Synonyms: Kinesin-like protein KIF20A, Rabkinesin-6, Rab6-interacting kinesin-like protein,

## Target Details

---

GG10\_2, RAB6KIFL  
NCBI Gene Symbol: KIF20A

Molecular Weight: 100 kDa

Gene ID: 10112

OMIM: 605664

UniProt: [O95235](#)

## Application Details

---

Application Notes: WB: 1:500~1:1000 IHC: 1:50~1:100 IF: 1:100~1:500 ELISA: 1:5000

Comment: Unigene-Number: Hs.718626 (NCBI Gene Symbol: KIF20A)

Restrictions: For Research Use only

## Handling

---

Format: Liquid

Concentration: 1 mg/mL

Buffer: phosphate buffered saline (without Mg<sup>2+</sup> and Ca<sup>2+</sup>), pH 7.4, 150 mM NaCl, 0.02 % sodium azide and 50 % glycerol.

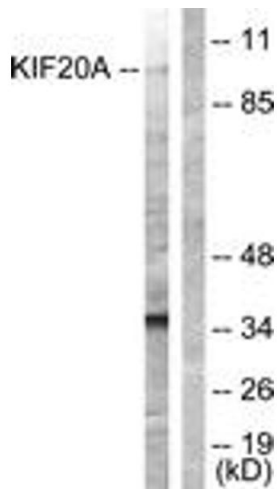
Preservative: Sodium azide

Precaution of Use: This product contains sodium azide: a POISONOUS AND HAZARDOUS SUBSTANCE which should be handled by trained staff only.

Storage: -20 °C

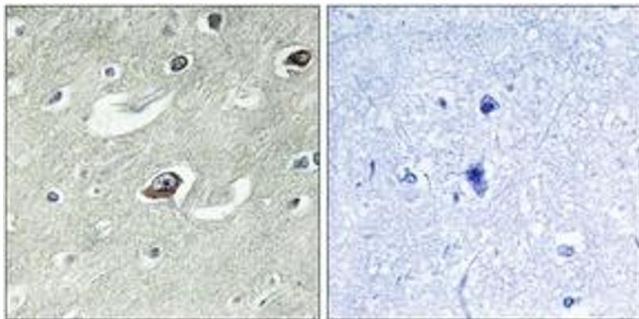
Storage Comment: Stable at -20°C for at least 1 year.

Expiry Date: 12 months



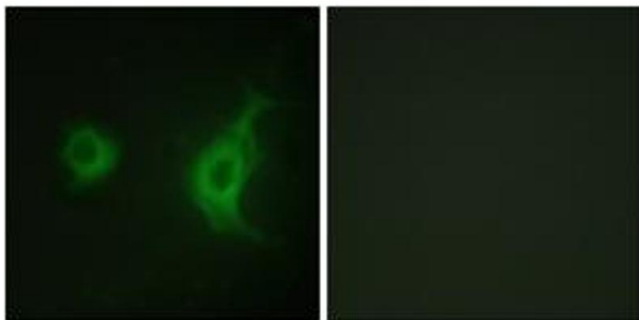
### Western Blotting

**Image 1.** Western blot analysis of extracts from 293 cells, using KIF20A (Ab-528) Antibody. The lane on the right is treated with the synthesized peptide.



### Immunohistochemistry

**Image 2.** Immunohistochemistry analysis of paraffin-embedded human brain tissue, using KIF20A (Ab-528) Antibody. The picture on the right is treated with the synthesized peptide.



### Immunofluorescence

**Image 3.** Immunofluorescence analysis of HuvEc cells, using KIF20A (Ab-528) Antibody. The picture on the right is treated with the synthesized peptide.