

Datasheet for ABIN1532704
anti-KIR5.1 antibody (AA 369-418)

3 Images

[Go to Product page](#)

Overview

Quantity:	100 µg
Target:	KIR5.1 (KCNJ16)
Binding Specificity:	AA 369-418
Reactivity:	Rat, Mouse
Host:	Rabbit
Clonality:	Polyclonal
Conjugate:	This KIR5.1 antibody is un-conjugated
Application:	Western Blotting (WB), ELISA, Immunohistochemistry (IHC), Immunofluorescence (IF)

Product Details

Immunogen:	The antiserum was produced against synthesized peptide derived from mouse Kir5.1.
Isotype:	IgG
Specificity:	Kir5.1 Antibody detects endogenous levels of total Kir5.1 protein.
Purification:	The antibody was purified from rabbit antiserum by affinity-chromatography using immunogen.
Purity:	> 95 %

Target Details

Target:	KIR5.1 (KCNJ16)
Alternative Name:	Kir5.1 (KCNJ16 Products)
Background:	Synonyms: IRK16, IRKG, Inward rectifier K channel Kir5.1, KCNJ16, Potassium channel inwardly

Target Details

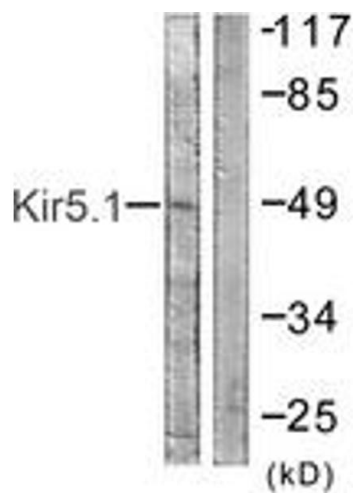
	rectifying subfamily J member 16 NCBI Gene Symbol: KCNJ16
Molecular Weight:	47 kDa
Gene ID:	3773
OMIM:	605722
UniProt:	Q9NPI9

Application Details

Application Notes:	WB: 1:500~1:1000 IHC: 1:50~1:100 IF: 1:100~1:500 ELISA: 1:10000
Comment:	Unigene-Number: HS.463985 (NCBI Gene Symbol: KCNJ16)
Restrictions:	For Research Use only

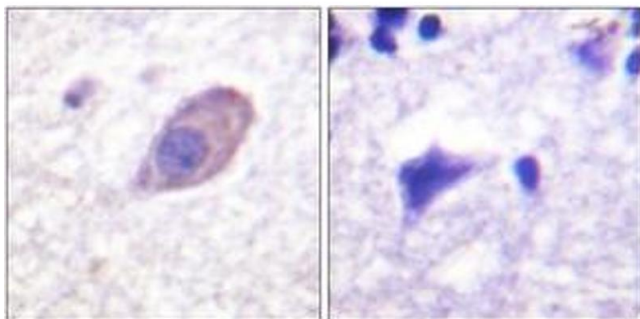
Handling

Format:	Liquid
Concentration:	1 mg/mL
Buffer:	phosphate buffered saline (without Mg ²⁺ and Ca ²⁺), pH 7.4, 150 mM NaCl, 0.02 % sodium azide and 50 % glycerol.
Preservative:	Sodium azide
Precaution of Use:	This product contains sodium azide: a POISONOUS AND HAZARDOUS SUBSTANCE which should be handled by trained staff only.
Storage:	-20 °C
Storage Comment:	Stable at -20°C for at least 1 year.
Expiry Date:	12 months



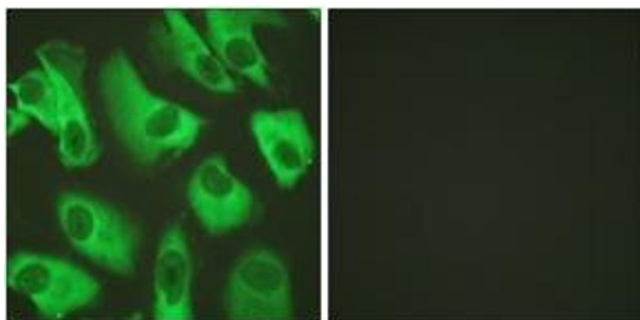
Western Blotting

Image 1. Western blot analysis of extracts from HeLa cells, using Kir5.1 (Ab-416) Antibody. The lane on the right is treated with the synthesized peptide.



Immunohistochemistry

Image 2. Immunohistochemistry analysis of paraffin-embedded human brain tissue, using Kir5.1 (Ab-416) Antibody. The picture on the right is treated with the synthesized peptide.



Immunofluorescence

Image 3. Immunofluorescence analysis of HeLa cells, using Kir5.1 (Ab-416) Antibody. The picture on the right is treated with the synthesized peptide.