

Datasheet for ABIN1532713  
**anti-MARK2 antibody (AA 562-611)**



[Go to Product page](#)

2 Images

## Overview

Quantity:	100 µL
Target:	MARK2
Binding Specificity:	AA 562-611
Reactivity:	Human, Mouse, Rat
Host:	Rabbit
Clonality:	Polyclonal
Conjugate:	This MARK2 antibody is un-conjugated
Application:	ELISA, Immunohistochemistry (IHC), Immunofluorescence (IF)

## Product Details

Immunogen:	The antiserum was produced against synthesized peptide derived from human MARK2.
Isotype:	IgG
Specificity:	MARK2 Antibody detects endogenous levels of total MARK2 protein.
Purification:	The antibody was purified from rabbit antiserum by affinity-chromatography using immunogen.
Purity:	> 95 %

## Target Details

Target:	MARK2
Alternative Name:	MARK2 ( <a href="#">MARK2 Products</a> )
Background:	Synonyms: ELKL motif kinase 1, EMK, EMK1, MAP/microtubule affinity-regulating kinase 2,

## Target Details

---

PAR-1, PAR-1b, kinase MARK2

NCBI Gene Symbol: MARK2

Molecular Weight: 87 kDa

Gene ID: 2011

OMIM: 600526

UniProt: [Q7KZI7](#)

Pathways: [SARS-CoV-2 Protein Interactome](#), [The Global Phosphorylation Landscape of SARS-CoV-2 Infection](#)

## Application Details

---

Application Notes: IHC: 1:50~1:100 IF: 1:100~1:500 ELISA: 1:5000

Comment: Unigene-Number: Hs.567261 (NCBI Gene Symbol: MARK2)

Restrictions: For Research Use only

## Handling

---

Format: Liquid

Concentration: 1 mg/mL

Buffer: phosphate buffered saline (without Mg<sup>2+</sup> and Ca<sup>2+</sup>), pH 7.4, 150 mM NaCl, 0.02 % sodium azide and 50 % glycerol.

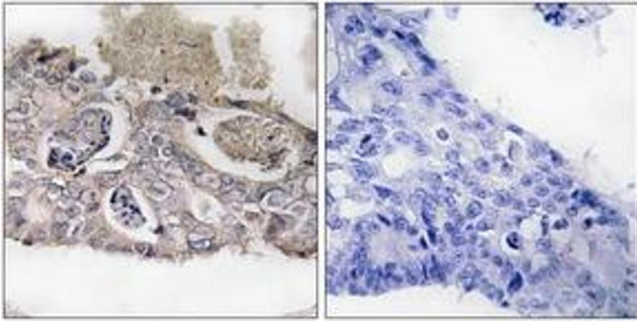
Preservative: Sodium azide

Precaution of Use: This product contains sodium azide: a POISONOUS AND HAZARDOUS SUBSTANCE which should be handled by trained staff only.

Storage: -20 °C

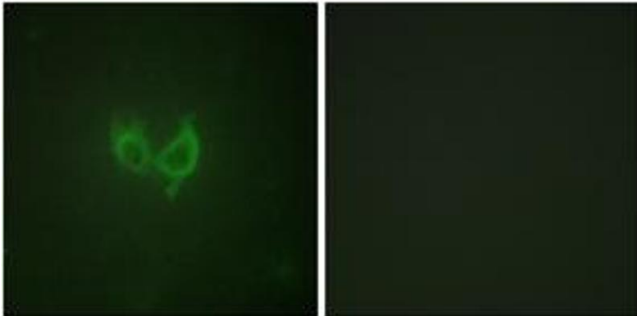
Storage Comment: Stable at -20°C for at least 1 year.

Expiry Date: 12 months



### Immunohistochemistry

**Image 1.** Immunohistochemistry analysis of paraffin-embedded human colon carcinoma tissue, using MARK2 (Ab-596) Antibody. The picture on the right is treated with the synthesized peptide.



### Immunofluorescence

**Image 2.** Immunofluorescence analysis of HuvEc cells, using MARK2 (Ab-596) Antibody. The picture on the right is treated with the synthesized peptide.