

Datasheet for ABIN1532716
anti-DUSP1 antibody (AA 318-367)



[Go to Product page](#)

2 Images

Overview

Quantity:	100 µL
Target:	DUSP1
Binding Specificity:	AA 318-367
Reactivity:	Human
Host:	Rabbit
Clonality:	Polyclonal
Conjugate:	This DUSP1 antibody is un-conjugated
Application:	Western Blotting (WB), ELISA, Immunohistochemistry (IHC)

Product Details

Immunogen:	The antiserum was produced against synthesized peptide derived from human MKP1.
Isotype:	IgG
Specificity:	MKP1 Antibody detects endogenous levels of total MKP1 protein.
Purification:	The antibody was purified from rabbit antiserum by affinity-chromatography using immunogen.
Purity:	> 95 %

Target Details

Target:	DUSP1
Alternative Name:	MKP1 (DUSP1 Products)
Background:	Synonyms: 3CH134, CL100, Dual specificity protein phosphatase 1, Dual specificity protein

Target Details

phosphatase hVH1, DUS1, DUSP1, MAP kinase phosphatase-1, MKP1, Protein-tyrosine phosphatase 3CH134, Protein-tyrosine phosphatase CL100, Protein-tyrosine phosphatase ERP, PTPN1
NCBI Gene Symbol: DUS1

Molecular Weight: 39 kDa

Gene ID: 1843

OMIM: 600714

UniProt: [P28562](#)

Application Details

Application Notes: WB: 1:500~1:1000 IHC: 1:50~1:100 ELISA: 1:5000

Comment: Unigene-Number: Hs.171695 (NCBI Gene Symbol: DUS1)

Restrictions: For Research Use only

Handling

Format: Liquid

Concentration: 1 mg/mL

Buffer: phosphate buffered saline (without Mg²⁺ and Ca²⁺), pH 7.4, 150 mM NaCl, 0.02 % sodium azide and 50 % glycerol.

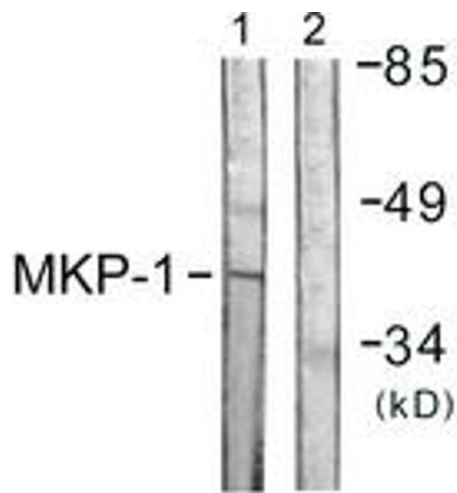
Preservative: Sodium azide

Precaution of Use: This product contains sodium azide: a POISONOUS AND HAZARDOUS SUBSTANCE which should be handled by trained staff only.

Storage: -20 °C

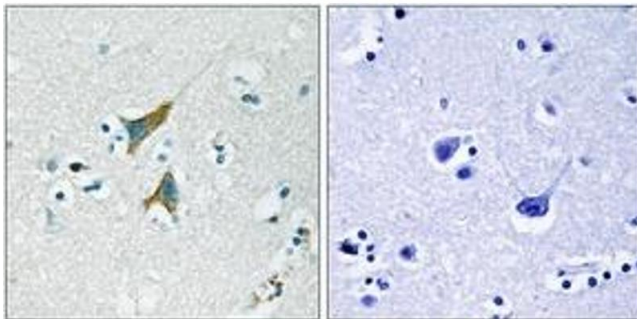
Storage Comment: Stable at -20°C for at least 1 year.

Expiry Date: 12 months



Western Blotting

Image 1. Western blot analysis of extracts from Jurkat cells, using MKP1 (Ab-359) Antibody. The lane on the right is treated with the synthesized peptide.



Immunohistochemistry

Image 2. Immunohistochemistry analysis of paraffin-embedded human brain tissue, using MKP1 (Ab-359) Antibody. The picture on the right is treated with the synthesized peptide.