



[Go to Product page](#)

Datasheet for ABIN1532720  
**anti-PAK1/2 antibody (AA 165-214)**

3 Images

### Overview

Quantity:	100 µg
Target:	PAK1/2
Binding Specificity:	AA 165-214
Reactivity:	Human, Rat, Mouse
Host:	Rabbit
Clonality:	Polyclonal
Conjugate:	This PAK1/2 antibody is un-conjugated
Application:	Western Blotting (WB), ELISA, Immunohistochemistry (IHC), Immunofluorescence (IF)

### Product Details

Immunogen:	The antiserum was produced against synthesized peptide derived from human PAK1/2.
Isotype:	IgG
Specificity:	PAK1/2 Antibody detects endogenous levels of total PAK1/2 protein.
Purification:	The antibody was purified from rabbit antiserum by affinity-chromatography using immunogen.
Purity:	> 95 %

### Target Details

Target:	PAK1/2
Abstract:	<a href="#">PAK1/2 Products</a>
Background:	Synonyms: Serine/threonine-protein kinase PAK 1, p21-activated kinase 1, PAK-1, p65-PAK,

## Target Details

---

Alpha-PAK, PAK1  
NCBI Gene Symbol: PAK1

Molecular Weight: 60 kDa

Gene ID: 5058

OMIM: 602590

UniProt: [Q13153](#)

## Application Details

---

Application Notes: WB: 1:500~1:1000 IHC: 1:50~1:100 IF: 1:100~1:500 ELISA: 1:1000

Comment: Unigene-Number: Hs.435714 (NCBI Gene Symbol: PAK1)

Restrictions: For Research Use only

## Handling

---

Format: Liquid

Concentration: 1 mg/mL

Buffer: phosphate buffered saline (without Mg<sup>2+</sup> and Ca<sup>2+</sup>), pH 7.4, 150 mM NaCl, 0.02 % sodium azide and 50 % glycerol.

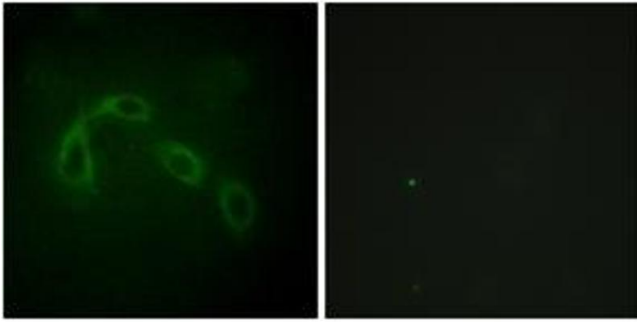
Preservative: Sodium azide

Precaution of Use: This product contains sodium azide: a POISONOUS AND HAZARDOUS SUBSTANCE which should be handled by trained staff only.

Storage: -20 °C

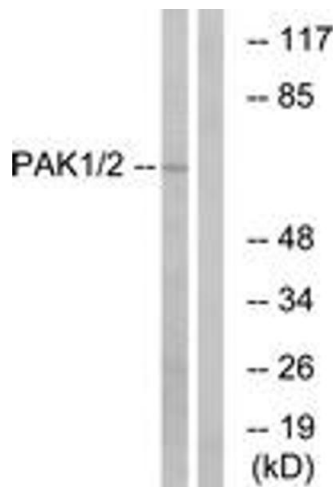
Storage Comment: Stable at -20°C for at least 1 year.

Expiry Date: 12 months



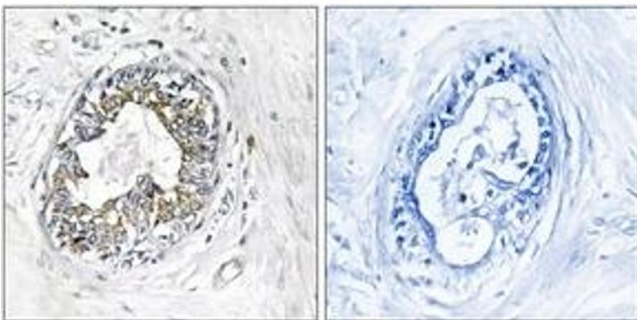
### Immunofluorescence

**Image 1.** Immunofluorescence analysis of HeLa cells, using PAK1/2 (Ab-199) Antibody. The picture on the right is treated with the synthesized peptide.



### Western Blotting

**Image 2.** Western blot analysis of extracts from K562 cells, using PAK1/2 (Ab-199) Antibody. The lane on the right is treated with the synthesized peptide.



### Immunohistochemistry

**Image 3.** Immunohistochemistry analysis of paraffin-embedded human breast carcinoma tissue, using PAK1/2 (Ab-199) Antibody. The picture on the right is treated with the synthesized peptide.