

Datasheet for ABIN1532721
anti-PPP1R2 antibody (AA 86-135)

2 Images

[Go to Product page](#)

Overview

Quantity:	100 µg
Target:	PPP1R2
Binding Specificity:	AA 86-135
Reactivity:	Human, Mouse, Rat
Host:	Rabbit
Clonality:	Polyclonal
Conjugate:	This PPP1R2 antibody is un-conjugated
Application:	ELISA, Western Blotting (WB), Immunohistochemistry (IHC)

Product Details

Immunogen:	The antiserum was produced against synthesized peptide derived from human PPP1R2.
Isotype:	IgG
Specificity:	PPP1R2 Antibody detects endogenous levels of total PPP1R2 protein.
Purification:	The antibody was purified from rabbit antiserum by affinity-chromatography using immunogen.
Purity:	> 95 %

Target Details

Target:	PPP1R2
Alternative Name:	PPP1R2 (PPP1R2 Products)
Background:	Synonyms: I-2, IPP-2, IPP2, Protein phosphatase inhibitor 2

Target Details

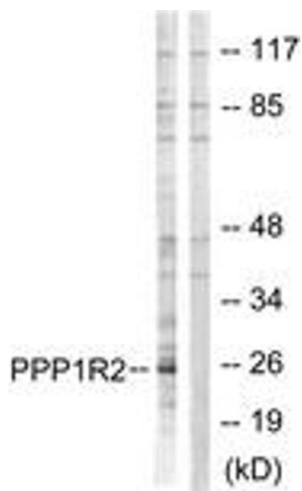
	NCBI Gene Symbol: PPP1R2
Molecular Weight:	23 kDa
Gene ID:	5504
OMIM:	601792
UniProt:	P41236
Pathways:	PI3K-Akt Signaling , Cellular Glucan Metabolic Process

Application Details

Application Notes:	WB: 1:500~1:1000 IHC: 1:50~1:100 ELISA: 1:5000
Comment:	Unigene-Number: Hs.535731 (NCBI Gene Symbol: PPP1R2)
Restrictions:	For Research Use only

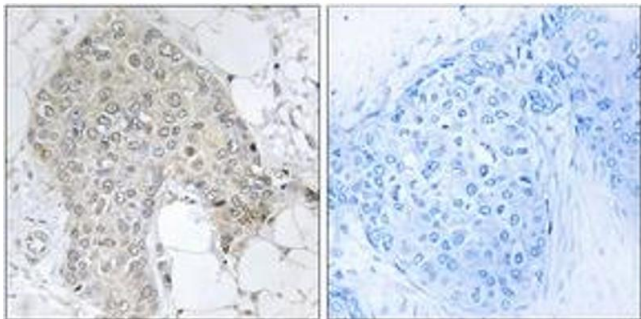
Handling

Format:	Liquid
Concentration:	1 mg/mL
Buffer:	phosphate buffered saline (without Mg ²⁺ and Ca ²⁺), pH 7.4, 150 mM NaCl, 0.02 % sodium azide and 50 % glycerol.
Preservative:	Sodium azide
Precaution of Use:	This product contains sodium azide: a POISONOUS AND HAZARDOUS SUBSTANCE which should be handled by trained staff only.
Storage:	-20 °C
Storage Comment:	Stable at -20°C for at least 1 year.
Expiry Date:	12 months



Western Blotting

Image 1. Western blot analysis of extracts from Jurkat cells, using PPP1R2 (Ab-120/121) Antibody. The lane on the right is treated with the synthesized peptide.



Immunohistochemistry

Image 2. Immunohistochemistry analysis of paraffin-embedded human breast carcinoma tissue, using PPP1R2 (Ab-120/121) Antibody. The picture on the right is treated with the synthesized peptide.