

Datasheet for ABIN1532733

anti-Aurora Kinase B antibody (AA 1-50)**3** Images[Go to Product page](#)

Overview

Quantity:	100 µL
Target:	Aurora Kinase B (AURKB)
Binding Specificity:	AA 1-50
Reactivity:	Human, Mouse, Rat
Host:	Rabbit
Clonality:	Polyclonal
Conjugate:	This Aurora Kinase B antibody is un-conjugated
Application:	Western Blotting (WB), ELISA, Immunohistochemistry (IHC), Immunofluorescence (IF)

Product Details

Immunogen:	The antiserum was produced against synthesized peptide derived from human AurB.
Isotype:	IgG
Specificity:	AurB Antibody detects endogenous levels of total AurB protein.
Purification:	The antibody was purified from rabbit antiserum by affinity-chromatography using immunogen.
Purity:	> 95 %

Target Details

Target:	Aurora Kinase B (AURKB)
Alternative Name:	AurB (AURKB Products)
Background:	Synonyms: AIK2, AIM-1, AIM1, ARK2, AURKB, Aurora- and Ipl1-like midbody-associated protein

Target Details

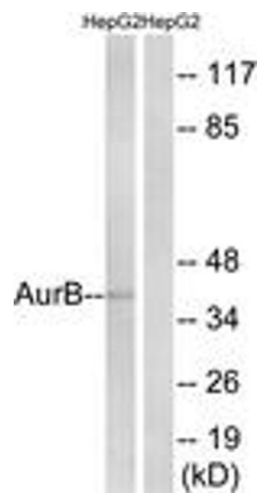
	1, Aurora-B, Aurora-related kinase 2, Aurora/IPL1-related kinase 2, Serine/threonine protein kinase 12, STK-1, STK12 NCBI Gene Symbol: AURKB
Molecular Weight:	39 kDa
Gene ID:	9212
OMIM:	604970
UniProt:	Q96GD4
Pathways:	TCR Signaling , Cell Division Cycle , Maintenance of Protein Location , Hepatitis C , Toll-Like Receptors Cascades

Application Details

Application Notes:	WB: 1:500~1:1000 IHC: 1:50~1:100 IF: 1:100~1:500 ELISA: 1:5000
Comment:	Unigene-Number: Hs.442658 (NCBI Gene Symbol: AURKB)
Restrictions:	For Research Use only

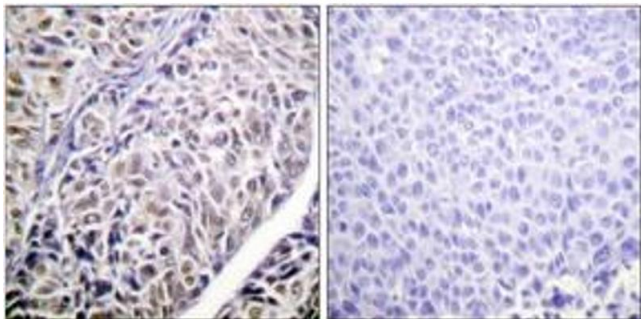
Handling

Format:	Liquid
Concentration:	1 mg/mL
Buffer:	phosphate buffered saline (without Mg2+ and Ca2+), pH 7.4, 150 mM NaCl, 0.02 % sodium azide and 50 % glycerol.
Preservative:	Sodium azide
Precaution of Use:	This product contains sodium azide: a POISONOUS AND HAZARDOUS SUBSTANCE which should be handled by trained staff only.
Storage:	-20 °C
Storage Comment:	Stable at -20°C for at least 1 year.
Expiry Date:	12 months



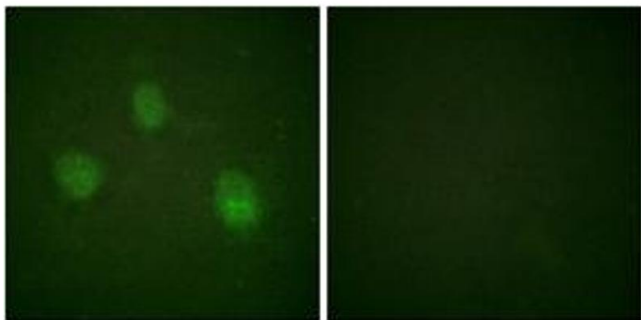
Western Blotting

Image 1. Western blot analysis of extracts from HepG2, using AurB (Ab-12) Antibody. The lane on the right is treated with the synthesized peptide.



Immunohistochemistry

Image 2. Immunohistochemistry analysis of paraffin-embedded human liver carcinoma tissue, using AurB (Ab-12) Antibody. The picture on the right is treated with the synthesized peptide.



Immunofluorescence

Image 3. Immunofluorescence analysis of HeLa cells, using AurB (Ab-12) Antibody. The picture on the right is treated with the synthesized peptide.