

Datasheet for ABIN1532748
anti-ZC3HC1 antibody (AA 320-369)[Go to Product page](#)

2 Images

Overview

| | |
|----------------------|---|
| Quantity: | 100 µg |
| Target: | ZC3HC1 |
| Binding Specificity: | AA 320-369 |
| Reactivity: | Human, Mouse, Rat |
| Host: | Rabbit |
| Clonality: | Polyclonal |
| Conjugate: | This ZC3HC1 antibody is un-conjugated |
| Application: | Western Blotting (WB), ELISA, Immunofluorescence (IF) |

Product Details

| | |
|---------------|---|
| Immunogen: | The antiserum was produced against synthesized peptide derived from human NIPA. |
| Isotype: | IgG |
| Specificity: | NIPA Antibody detects endogenous levels of total NIPA protein. |
| Purification: | The antibody was purified from rabbit antiserum by affinity-chromatography using immunogen. |
| Purity: | > 95 % |

Target Details

| | |
|-------------------|--|
| Target: | ZC3HC1 |
| Alternative Name: | NIPA (ZC3HC1 Products) |
| Background: | Synonyms: Nuclear interacting partner of ALK, Nuclear-interacting partner of ALK, ZC3HC1 |

Target Details

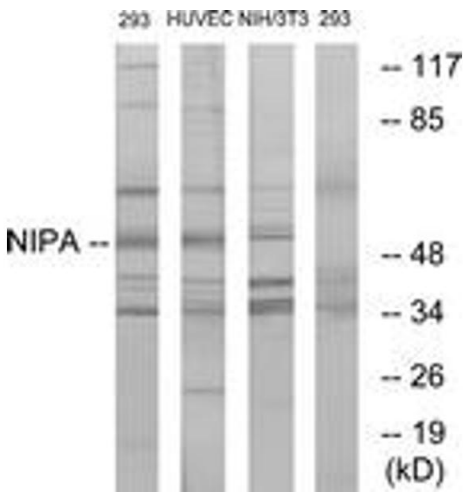
| | |
|-------------------|--------------------------|
| | NCBI Gene Symbol: ZC3HC1 |
| Molecular Weight: | 55 kDa |
| Gene ID: | 51530 |
| UniProt: | Q86WB0 |

Application Details

| | |
|--------------------|---|
| Application Notes: | WB: 1:500~1:1000 IF: 1:100~1:500 ELISA: 1:40000 |
| Comment: | Unigene-Number: Hs.194157, Hs.720668 (NCBI Gene Symbol: ZC3HC1) |
| Restrictions: | For Research Use only |

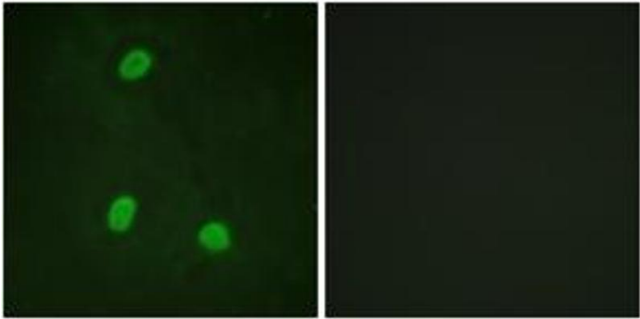
Handling

| | |
|--------------------|---|
| Format: | Liquid |
| Concentration: | 1 mg/mL |
| Buffer: | phosphate buffered saline (without Mg ²⁺ and Ca ²⁺), pH 7.4, 150 mM NaCl, 0.02 % sodium azide and 50 % glycerol. |
| Preservative: | Sodium azide |
| Precaution of Use: | This product contains sodium azide: a POISONOUS AND HAZARDOUS SUBSTANCE which should be handled by trained staff only. |
| Storage: | -20 °C |
| Storage Comment: | Stable at -20°C for at least 1 year. |
| Expiry Date: | 12 months |



Western Blotting

Image 1. Western blot analysis of extracts from 293/HuEc/NIH-3T3, using NIPA (Ab-354) Antibody. The lane on the right is treated with the synthesized peptide.



Immunofluorescence

Image 2. Immunofluorescence analysis of HeLa cells, using NIPA (Ab-354) Antibody. The picture on the right is treated with the synthesized peptide.