

Datasheet for ABIN1532781  
**anti-RGS16 antibody (AA 141-190)**

## 2 Images

[Go to Product page](#)

## Overview

|                      |  |
|----------------------|--|
| Quantity:            | 100 µg   |
| Target:              | RGS16  |
| Binding Specificity: | AA 141-190   |
| Reactivity:          | Human, Mouse, Rat  |
| Host:                | Rabbit   |
| Clonality:           | Polyclonal   |
| Conjugate:           | This RGS16 antibody is un-conjugated                       |
| Application:         | ELISA, Immunohistochemistry (IHC), Immunofluorescence (IF) |

## Product Details

|               |   |
|---------------|---|
| Immunogen:    | The antiserum was produced against synthesized peptide derived from human RGS16.            |
| Isotype:      | IgG   |
| Specificity:  | RGS16 Antibody detects endogenous levels of total RGS16 protein.                            |
| Purification: | The antibody was purified from rabbit antiserum by affinity-chromatography using immunogen. |
| Purity:       | > 95 %  |

## Target Details

|                   |   |
|-------------------|---|
| Target:           | RGS16   |
| Alternative Name: | RGS16 ( <a href="#">RGS16 Products</a> )  |
| Background:       | Synonyms: A28-RGS14P, RGS-R, RGSG, RGSR, Regulator of G-protein signaling 16, Retinally |

## Target Details

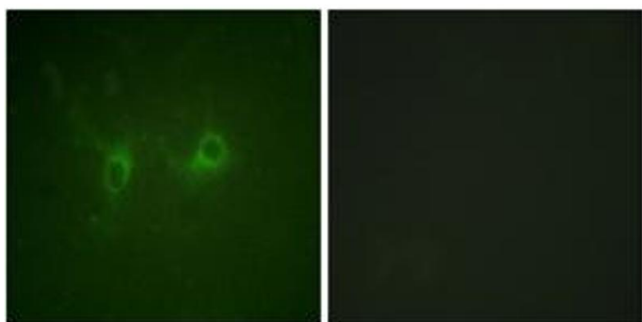
|                   |   |
|-------------------|---|
|                   | abundant regulator of G-protein signaling<br>NCBI Gene Symbol: RGS16  |
| Molecular Weight: | 22 kDa  |
| Gene ID:          | 6004  |
| OMIM:             | 602514  |
| UniProt:          | <a href="#">O15492</a>  |
| Pathways:         | <a href="#">Myometrial Relaxation and Contraction, Regulation of G-Protein Coupled Receptor Protein Signaling</a> |

## Application Details

|                    |   |
|--------------------|---|
| Application Notes: | IHC: 1:50~1:100 IF: 1:100~1:500 ELISA: 1:1000       |
| Comment:           | Unigene-Number: Hs.413297 (NCBI Gene Symbol: RGS16) |
| Restrictions:      | For Research Use only                               |

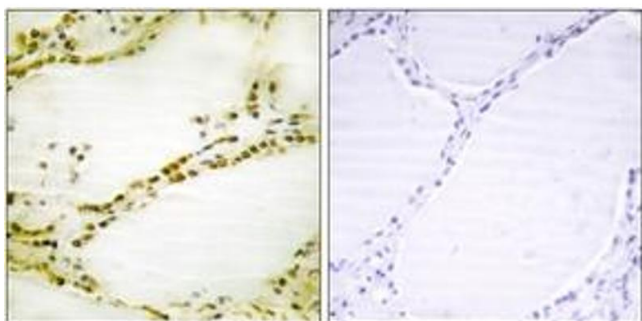
## Handling

|                    |   |
|--------------------|---|
| Format:            | Liquid  |
| Concentration:     | 1 mg/mL   |
| Buffer:            | phosphate buffered saline (without Mg <sup>2+</sup> and Ca <sup>2+</sup> ), pH 7.4, 150 mM NaCl, 0.02 % sodium azide and 50 % glycerol. |
| Preservative:      | Sodium azide  |
| Precaution of Use: | This product contains sodium azide: a POISONOUS AND HAZARDOUS SUBSTANCE which should be handled by trained staff only.                  |
| Storage:           | -20 °C  |
| Storage Comment:   | Stable at -20°C for at least 1 year.  |
| Expiry Date:       | 12 months   |



#### Immunofluorescence

**Image 1.** Immunofluorescence analysis of COS7 cells, using RGS16 (Ab-168) Antibody. The picture on the right is treated with the synthesized peptide.



#### Immunohistochemistry

**Image 2.** Immunohistochemistry analysis of paraffin-embedded human thyroid gland tissue, using RGS16 (Ab-168) Antibody. The picture on the right is treated with the synthesized peptide.