



Datasheet for ABIN1532822

## anti-CaMK2 alpha/delta antibody (AA 256-305)



[Go to Product page](#)

### 3 Images

#### Overview

Quantity:	100 µg
Target:	CaMK2 alpha/delta
Binding Specificity:	AA 256-305
Reactivity:	Human, Mouse, Rat
Host:	Rabbit
Clonality:	Polyclonal
Conjugate:	This CaMK2 alpha/delta antibody is un-conjugated
Application:	Immunohistochemistry (IHC), Western Blotting (WB), Immunofluorescence (IF), ELISA

#### Product Details

Immunogen:	The antiserum was produced against synthesized peptide derived from human CaMK2 alpha/delta.
Isotype:	IgG
Specificity:	CaMK2 alpha/delta Antibody detects endogenous levels of total CaMK2 alpha/delta protein.
Purification:	The antibody was purified from rabbit antiserum by affinity-chromatography using immunogen.
Purity:	> 95 %

#### Target Details

Target:	CaMK2 alpha/delta
Abstract:	<a href="#">CaMK2 alpha/delta Products</a>

## Target Details

---

Background:	Synonyms: CAMK2A, CaM-kinase II alpha chain, CaMK-II alpha subunit, CaMKII-alpha, Calcium/calmodulin-dependent protein kinase type II alpha chain, KCC2A, kinase CaMK2-alpha NCBI Gene Symbol: CAMK2D
Molecular Weight:	54 kDa
Gene ID:	815, 817
OMIM:	114078
UniProt:	<a href="#">Q9UQM7</a> , <a href="#">Q13557</a>

## Application Details

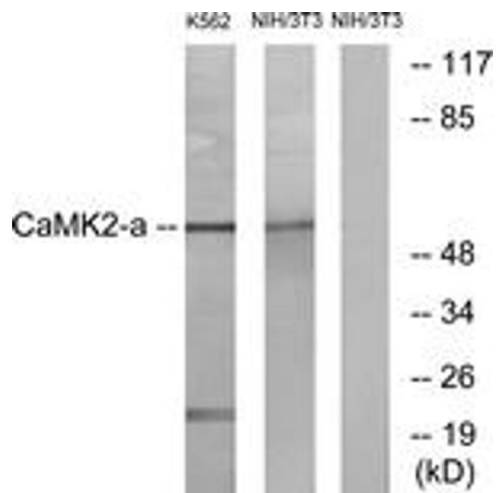
---

Application Notes:	WB: 1:500~1:1000 IHC: 1:50~1:100 IF: 1:100~1:500 ELISA: 1:10000
Comment:	Unigene-Number: Hs.724403, Hs.144114 (NCBI Gene Symbol: CAMK2D)
Restrictions:	For Research Use only

## Handling

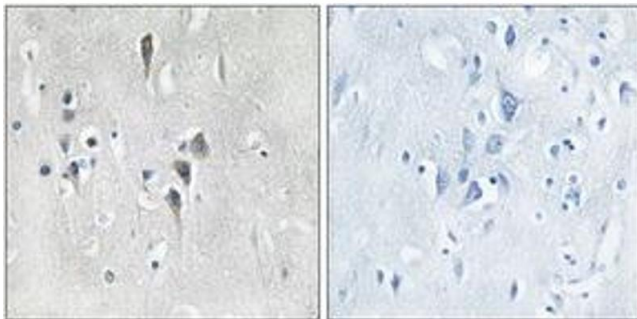
---

Format:	Liquid
Concentration:	1 mg/mL
Buffer:	phosphate buffered saline (without Mg <sup>2+</sup> and Ca <sup>2+</sup> ), pH 7.4, 150 mM NaCl, 0.02 % sodium azide and 50 % glycerol.
Preservative:	Sodium azide
Precaution of Use:	This product contains sodium azide: a POISONOUS AND HAZARDOUS SUBSTANCE which should be handled by trained staff only.
Storage:	-20 °C
Storage Comment:	Stable at -20°C for at least 1 year.
Expiry Date:	12 months



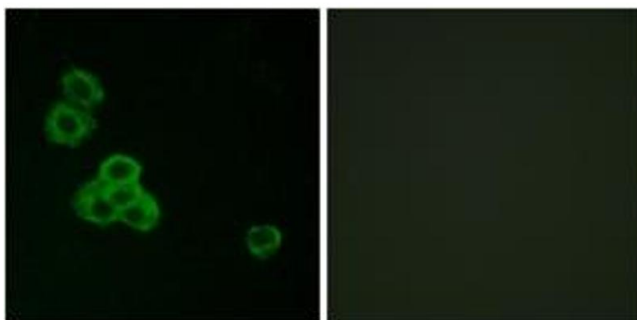
### Western Blotting

**Image 1.** Western blot analysis of extracts from NIH-3T3/K562 cells, using CaMK2 alpha/delta (Ab-286) Antibody. The lane on the right is treated with the synthesized peptide.



### Immunohistochemistry

**Image 2.** Immunohistochemistry analysis of paraffin-embedded human brain tissue, using CaMK2 alpha/delta (Ab-286) Antibody. The picture on the right is treated with the synthesized peptide.



### Immunofluorescence

**Image 3.** Immunofluorescence analysis of MCF7 cells, using CaMK2 alpha/delta (Ab-286) Antibody. The picture on the right is treated with the synthesized peptide.