

Datasheet for ABIN1532840
anti-CPI-17 antibody (AA 5-54)[Go to Product page](#)

3 Images

Overview

Quantity:	100 µg
Target:	CPI-17 (PPP1R14A)
Binding Specificity:	AA 5-54
Reactivity:	Human, Mouse, Rat
Host:	Rabbit
Clonality:	Polyclonal
Conjugate:	This CPI-17 antibody is un-conjugated
Application:	Western Blotting (WB), ELISA, Immunohistochemistry (IHC), Immunofluorescence (IF)

Product Details

Immunogen:	The antiserum was produced against synthesized peptide derived from human CPI17 alpha.
Isotype:	IgG
Specificity:	CPI17 alpha Antibody detects endogenous levels of total CPI17 alpha protein.
Purification:	The antibody was purified from rabbit antiserum by affinity-chromatography using immunogen.
Purity:	> 95 %

Target Details

Target:	CPI-17 (PPP1R14A)
Alternative Name:	CPI17 alpha (PPP1R14A Products)
Background:	Synonyms: Protein phosphatase 1 regulatory subunit 14A, 17 kDa PKC-potentiated inhibitory

Target Details

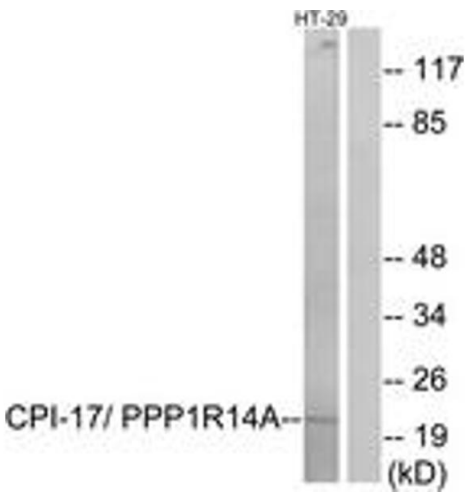
	protein of PP1, CPI-17, PPP1R14A, CPI17, PPP1INL NCBI Gene Symbol: PPP1R14A
Molecular Weight:	16 kDa
Gene ID:	94274
OMIM:	608153
UniProt:	Q96A00

Application Details

Application Notes:	WB: 1:500~1:1000 IHC: 1:50~1:100 IF: 1:100~1:500 ELISA: 1:20000
Comment:	Unigene-Number: Hs.631569 (NCBI Gene Symbol: PPP1R14A)
Restrictions:	For Research Use only

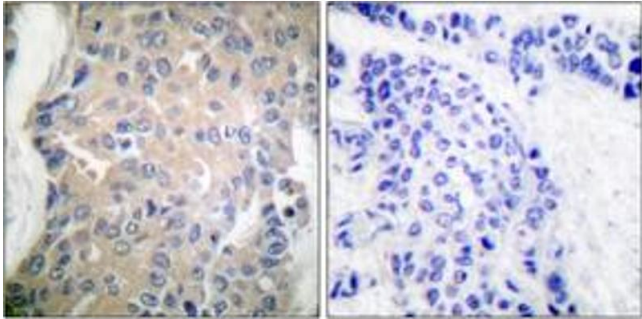
Handling

Format:	Liquid
Concentration:	1 mg/mL
Buffer:	phosphate buffered saline (without Mg ²⁺ and Ca ²⁺), pH 7.4, 150 mM NaCl, 0.02 % sodium azide and 50 % glycerol.
Preservative:	Sodium azide
Precaution of Use:	This product contains sodium azide: a POISONOUS AND HAZARDOUS SUBSTANCE which should be handled by trained staff only.
Storage:	-20 °C
Storage Comment:	Stable at -20°C for at least 1 year.
Expiry Date:	12 months



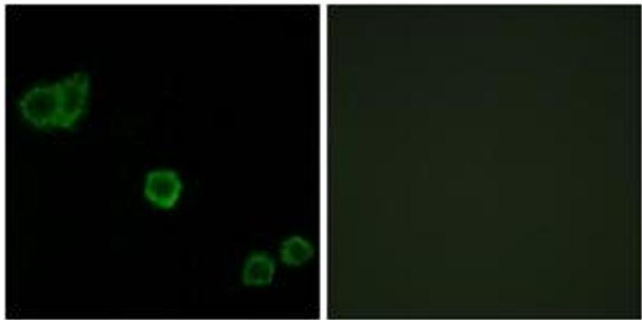
Western Blotting

Image 1. Western blot analysis of extracts from HT-29 cells, using CPI17 alpha (Ab-38) Antibody. The lane on the right is treated with the synthesized peptide.



Immunohistochemistry

Image 2. Immunohistochemistry analysis of paraffin-embedded human breast carcinoma tissue, using CPI17 alpha (Ab-38) Antibody. The picture on the right is treated with the synthesized peptide.



Immunofluorescence

Image 3. Immunofluorescence analysis of HeLa cells, using CPI17 alpha (Ab-38) Antibody. The picture on the right is treated with the synthesized peptide.