

Datasheet for ABIN1532843
anti-DAB1 antibody (AA 187-236)



[Go to Product page](#)

2 Images

Overview

Quantity:	100 µL
Target:	DAB1
Binding Specificity:	AA 187-236
Reactivity:	Human, Mouse, Rat
Host:	Rabbit
Clonality:	Polyclonal
Application:	Western Blotting (WB), ELISA, Immunofluorescence (IF)

Product Details

Immunogen:	The antiserum was produced against synthesized peptide derived from human Dab1.
Isotype:	IgG
Specificity:	Dab1 Antibody detects endogenous levels of total Dab1 protein.
Purification:	The antibody was purified from rabbit antiserum by affinity-chromatography using immunogen.
Purity:	> 95 %

Target Details

Target:	DAB1
Alternative Name:	Dab1 (DAB1 Products)
Background:	Synonyms: Disabled homolog 1, DAB1 NCBI Gene Symbol: DAB1

Target Details

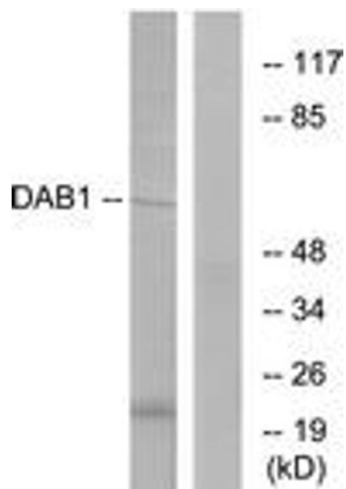
Molecular Weight:	59 kDa
Gene ID:	1600
OMIM:	603448
UniProt:	O75553

Application Details

Application Notes:	WB: 1:500~1:1000 IF: 1:100~1:500 ELISA: 1:5000
Comment:	Unigene-Number: Hs.477370 (NCBI Gene Symbol: DAB1)
Restrictions:	For Research Use only

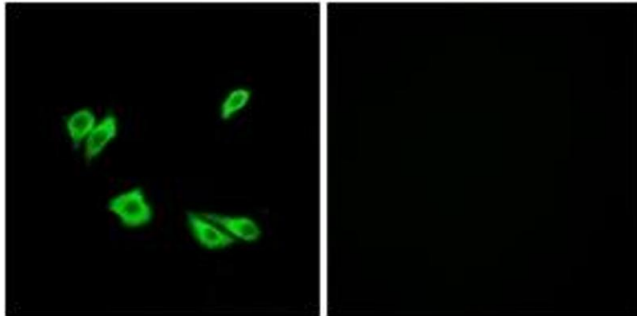
Handling

Format:	Liquid
Concentration:	1 mg/mL
Buffer:	phosphate buffered saline (without Mg ²⁺ and Ca ²⁺), pH 7.4, 150 mM NaCl, 0.02 % sodium azide and 50 % glycerol.
Preservative:	Sodium azide
Precaution of Use:	This product contains sodium azide: a POISONOUS AND HAZARDOUS SUBSTANCE which should be handled by trained staff only.
Storage:	-20 °C
Storage Comment:	Stable at -20°C for at least 1 year.
Expiry Date:	12 months



Western Blotting

Image 1. Western blot analysis of extracts from HeLa cells, using Dab1 (Ab-220) Antibody. The lane on the right is treated with the synthesized peptide.



Immunofluorescence

Image 2. Immunofluorescence analysis of HepG2 cells, using Dab1 (Ab-220) Antibody. The picture on the right is treated with the synthesized peptide.