



[Go to Product page](#)

Datasheet for ABIN1532848  
**anti-DOK2 antibody (AA 266-315)**

2 Images

Overview

Quantity:	100 µg
Target:	DOK2
Binding Specificity:	AA 266-315
Reactivity:	Human, Mouse
Host:	Rabbit
Clonality:	Polyclonal
Conjugate:	This DOK2 antibody is un-conjugated
Application:	Western Blotting (WB), Immunohistochemistry (IHC), ELISA

Product Details

Immunogen:	The antiserum was produced against synthesized peptide derived from human p56 Dok-2.
Isotype:	IgG
Specificity:	p56 Dok-2 Antibody detects endogenous levels of total p56 Dok-2 protein.
Purification:	The antibody was purified from rabbit antiserum by affinity-chromatography using immunogen.
Purity:	> 95 %

Target Details

Target:	DOK2
Alternative Name:	p56 Dok-2 ( <a href="#">DOK2 Products</a> )
Background:	Synonyms: Docking protein 2, Dok-R, Dok-related protein, DOK2, DokR, downstream of tyrosine

## Target Details

---

kinase 2, FRIP, IL-4 receptor interacting protein, p56(dok-2)

NCBI Gene Symbol: DOK2

---

Molecular Weight: 45 kDa

---

Gene ID: 9046

---

OMIM: 604997

---

UniProt: [O60496](#)

---

## Application Details

---

Application Notes: WB: 1:500~1:1000 IHC: 1:50~1:100 ELISA: 1:20000

---

Comment: Unigene-Number: Hs.71215 (NCBI Gene Symbol: DOK2)

---

Restrictions: For Research Use only

---

## Handling

---

Format: Liquid

---

Concentration: 1 mg/mL

---

Buffer: phosphate buffered saline (without Mg<sup>2+</sup> and Ca<sup>2+</sup>), pH 7.4, 150 mM NaCl, 0.02 % sodium azide and 50 % glycerol.

---

Preservative: Sodium azide

---

Precaution of Use: This product contains sodium azide: a POISONOUS AND HAZARDOUS SUBSTANCE which should be handled by trained staff only.

---

Storage: -20 °C

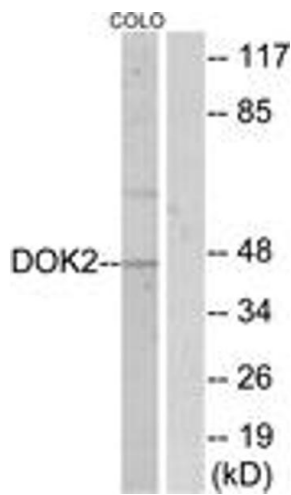
---

Storage Comment: Stable at -20°C for at least 1 year.

---

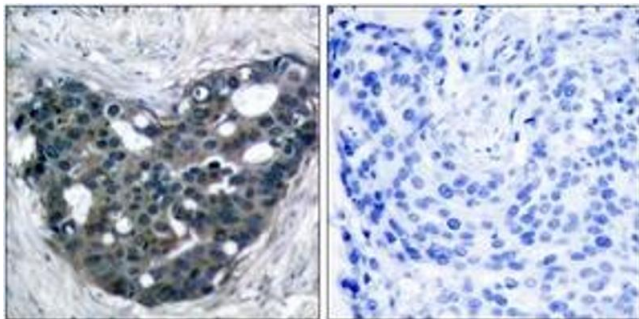
Expiry Date: 12 months

---



### Western Blotting

**Image 1.** Western blot analysis of extracts from COLO205, using p56 Dok-2 (Ab-299) Antibody. The lane on the right is treated with the synthesized peptide.



### Immunohistochemistry

**Image 2.** Immunohistochemistry analysis of paraffin-embedded human breast carcinoma tissue, using p56 Dok-2 (Ab-299) Antibody. The picture on the right is treated with the synthesized peptide.