

Datasheet for ABIN1532940

**anti-MAP2K6 antibody (AA 173-222)****2** Images[Go to Product page](#)

## Overview

Quantity:	100 µL
Target:	MAP2K6
Binding Specificity:	AA 173-222
Reactivity:	Human, Mouse, Rat
Host:	Rabbit
Clonality:	Polyclonal
Conjugate:	This MAP2K6 antibody is un-conjugated
Application:	Western Blotting (WB), ELISA, Immunohistochemistry (IHC)

## Product Details

Immunogen:	The antiserum was produced against synthesized peptide derived from human MKK6.
Isotype:	IgG
Specificity:	MKK6 Antibody detects endogenous levels of total MKK6 protein.
Purification:	The antibody was purified from rabbit antiserum by affinity-chromatography using immunogen.
Purity:	> 95 %

## Target Details

Target:	MAP2K6
Alternative Name:	MKK6 ( <a href="#">MAP2K6 Products</a> )
Background:	Synonyms: Dual specificity mitogen-activated protein kinase kinase 6, kinase MKK6, MAP

## Target Details

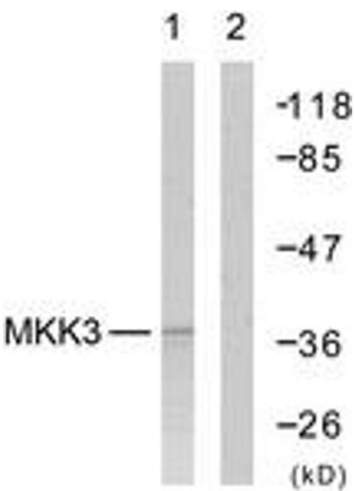
	kinase kinase 6, MAP2K6, MAPK/ERK kinase 6, MAPKK 6, MEK6, Mitogen-activated protein kinase kinase 6, MP2K6, PRKMK6, SAPKK3 NCBI Gene Symbol: MAP2K6
Molecular Weight:	37 kDa
Gene ID:	5608
OMIM:	601254
UniProt:	<a href="#">P52564</a>
Pathways:	<a href="#">MAPK Signaling</a> , <a href="#">TLR Signaling</a> , <a href="#">Activation of Innate immune Response</a> , <a href="#">Regulation of Muscle Cell Differentiation</a> , <a href="#">Toll-Like Receptors Cascades</a>

## Application Details

Application Notes:	WB: 1:500~1:1000 IHC: 1:50~1:100 ELISA: 1:5000
Comment:	Unigene-Number: Hs.463978 (NCBI Gene Symbol: MAP2K6)
Restrictions:	For Research Use only

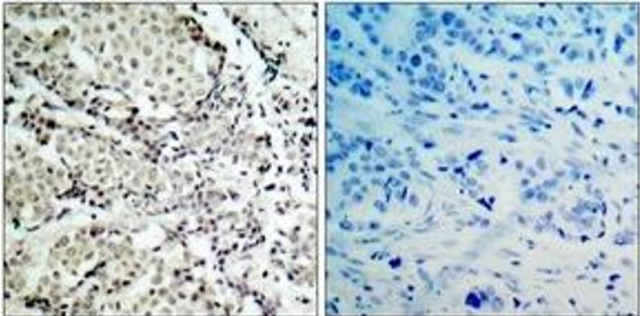
## Handling

Format:	Liquid
Concentration:	1 mg/mL
Buffer:	phosphate buffered saline (without Mg2+ and Ca2+), pH 7.4, 150 mM NaCl, 0.02 % sodium azide and 50 % glycerol.
Preservative:	Sodium azide
Precaution of Use:	This product contains sodium azide: a POISONOUS AND HAZARDOUS SUBSTANCE which should be handled by trained staff only.
Storage:	-20 °C
Storage Comment:	Stable at -20°C for at least 1 year.
Expiry Date:	12 months



Western Blotting

**Image 1.** Western blot analysis of extracts from MDA-MB-435 cells, using MKK6 (Ab-207) Antibody. The lane on the right is treated with the synthesized peptide.



Immunohistochemistry

**Image 2.** Immunohistochemistry analysis of paraffin-embedded human breast carcinoma tissue, using MKK6 (Ab-207) Antibody. The picture on the right is treated with the synthesized peptide.