

Datasheet for ABIN1533142
anti-ITCH antibody (AA 386-435)



[Go to Product page](#)

1 Image

Overview

| | |
|----------------------|-------------------------------------|
| Quantity: | 100 µL |
| Target: | ITCH |
| Binding Specificity: | AA 386-435 |
| Reactivity: | Human, Mouse |
| Host: | Rabbit |
| Clonality: | Polyclonal |
| Conjugate: | This ITCH antibody is un-conjugated |
| Application: | ELISA, Western Blotting (WB) |

Product Details

| | |
|---------------|---|
| Immunogen: | The antiserum was produced against synthesized peptide derived from human ITCH. |
| Isotype: | IgG |
| Specificity: | ITCH Antibody detects endogenous levels of total ITCH protein. |
| Purification: | The antibody was purified from rabbit antiserum by affinity-chromatography using immunogen. |
| Purity: | > 95 % |

Target Details

| | |
|-------------------|--|
| Target: | ITCH |
| Alternative Name: | ITCH (ITCH Products) |
| Background: | Synonyms: AIF4, AIP4, atrophin-1-interacting protein 4, Itchy homolog E3 ubiquitin protein |

Target Details

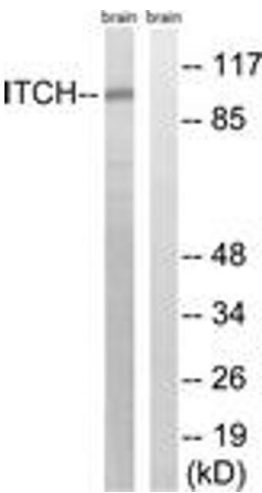
| | |
|-------------------|--|
| | ligase, NAPP1, NFE2-associated polypeptide 1, ubiquitin protein ligase ITCH NCBI Gene Symbol: ITCH |
| Molecular Weight: | 102 kDa |
| Gene ID: | 83737 |
| OMIM: | 606409 |
| UniProt: | Q96J02 |
| Pathways: | Activation of Innate immune Response , CXCR4-mediated Signaling Events |

Application Details

| | |
|--------------------|--|
| Application Notes: | WB: 1:500~1:1000 ELISA: 1:40000 |
| Comment: | Unigene-Number: Hs.632272 (NCBI Gene Symbol: ITCH) |
| Restrictions: | For Research Use only |

Handling

| | |
|--------------------|---|
| Format: | Liquid |
| Concentration: | 1 mg/mL |
| Buffer: | phosphate buffered saline (without Mg ²⁺ and Ca ²⁺), pH 7.4, 150 mM NaCl, 0.02 % sodium azide and 50 % glycerol. |
| Preservative: | Sodium azide |
| Precaution of Use: | This product contains sodium azide: a POISONOUS AND HAZARDOUS SUBSTANCE which should be handled by trained staff only. |
| Storage: | -20 °C |
| Storage Comment: | Stable at -20°C for at least 1 year. |
| Expiry Date: | 12 months |



Western Blotting

Image 1. Western blot analysis of extracts from mouse brain cells, using ITCH (Ab-420) Antibody. The lane on the right is treated with the synthesized peptide.