

Datasheet for ABIN1533153
anti-APLF antibody (AA 82-131)[Go to Product page](#)

2 Images

Overview

Quantity:	100 µg
Target:	APLF
Binding Specificity:	AA 82-131
Reactivity:	Human, Mouse
Host:	Rabbit
Clonality:	Polyclonal
Conjugate:	This APLF antibody is un-conjugated
Application:	ELISA, Immunohistochemistry (IHC), Western Blotting (WB)

Product Details

Immunogen:	The antiserum was produced against synthesized peptide derived from human APLF.
Isotype:	IgG
Specificity:	APLF Antibody detects endogenous levels of total APLF protein.
Purification:	The antibody was purified from rabbit antiserum by affinity-chromatography using immunogen.
Purity:	> 95 %

Target Details

Target:	APLF
Alternative Name:	APLF (APLF Products)
Background:	Synonyms: APFL, aprataxin and PNK-like factor, C2orf13, Xip1

Target Details

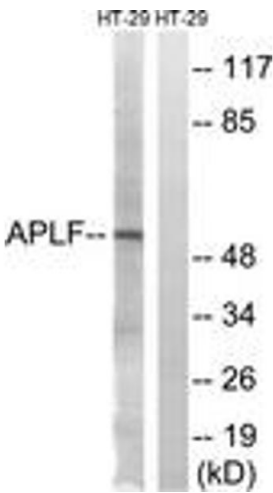
	NCBI Gene Symbol: APLF
Molecular Weight:	56 kDa
Gene ID:	200558
OMIM:	611035
UniProt:	Q8IW19
Pathways:	DNA Damage Repair

Application Details

Application Notes:	WB: 1:500~1:1000 IHC: 1:50~1:100 ELISA: 1:40000
Comment:	Unigene-Number: Hs.720369 (NCBI Gene Symbol: APLF)
Restrictions:	For Research Use only

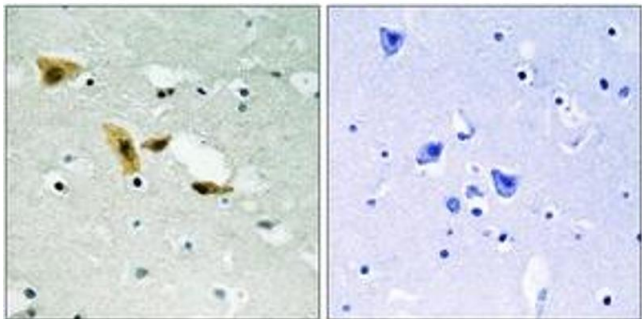
Handling

Format:	Liquid
Concentration:	1 mg/mL
Buffer:	phosphate buffered saline (without Mg ²⁺ and Ca ²⁺), pH 7.4, 150 mM NaCl, 0.02 % sodium azide and 50 % glycerol.
Preservative:	Sodium azide
Precaution of Use:	This product contains sodium azide: a POISONOUS AND HAZARDOUS SUBSTANCE which should be handled by trained staff only.
Storage:	-20 °C
Storage Comment:	Stable at -20°C for at least 1 year.
Expiry Date:	12 months



Western Blotting

Image 1. Western blot analysis of extracts from HT-29 cells, using APLF (Ab-116) Antibody. The lane on the right is treated with the synthesized peptide.



Immunohistochemistry

Image 2. Immunohistochemistry analysis of paraffin-embedded human brain tissue, using APLF (Ab-116) Antibody. The picture on the right is treated with the synthesized peptide.