

Datasheet for ABIN1533163
anti-Claudin 7 antibody (AA 162-211)

2 Images

[Go to Product page](#)

Overview

| | |
|----------------------|--|
| Quantity: | 100 µg |
| Target: | Claudin 7 (CLDN7) |
| Binding Specificity: | AA 162-211 |
| Reactivity: | Human, Mouse, Rat |
| Host: | Rabbit |
| Clonality: | Polyclonal |
| Conjugate: | This Claudin 7 antibody is un-conjugated |
| Application: | Western Blotting (WB), ELISA, Immunohistochemistry (IHC) |

Product Details

| | |
|---------------|---|
| Immunogen: | The antiserum was produced against synthesized peptide derived from human Claudin 7. |
| Isotype: | IgG |
| Specificity: | Claudin 7 Antibody detects endogenous levels of total Claudin 7 protein. |
| Purification: | The antibody was purified from rabbit antiserum by affinity-chromatography using immunogen. |
| Purity: | > 95 % |

Target Details

| | |
|-------------------|---|
| Target: | Claudin 7 (CLDN7) |
| Alternative Name: | Claudin 7 (CLDN7 Products) |
| Background: | Synonyms: CEPTRL2, claudin 7, claudin 9, claudin-1, claudin-7, CLD7, CLDN-7, CLDN7, |

Target Details

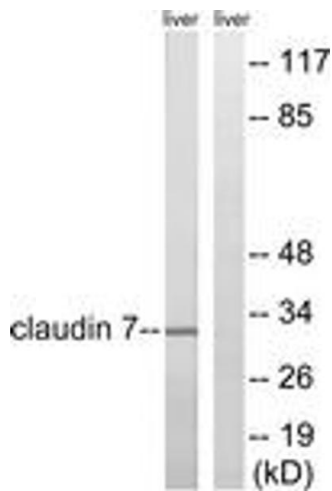
| | |
|-------------------|---|
| | clostridium perfringens enterotoxin receptor-like 2, CPETRL2 NCBI Gene Symbol: CLDN7 |
| Molecular Weight: | 22 kDa |
| Gene ID: | 1366 |
| OMIM: | 609131 |
| UniProt: | O95471 |
| Pathways: | Hepatitis C |

Application Details

| | |
|--------------------|---|
| Application Notes: | WB: 1:500~1:1000 IHC: 1:50~1:100 ELISA: 1:10000 |
| Comment: | Unigene-Number: Hs.513915 (NCBI Gene Symbol: CLDN7) |
| Restrictions: | For Research Use only |

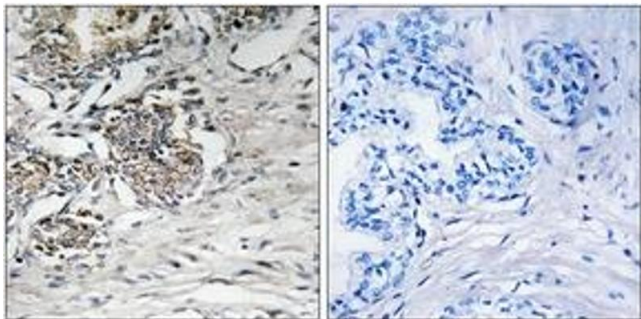
Handling

| | |
|--------------------|---|
| Format: | Liquid |
| Concentration: | 1 mg/mL |
| Buffer: | phosphate buffered saline (without Mg ²⁺ and Ca ²⁺), pH 7.4, 150 mM NaCl, 0.02 % sodium azide and 50 % glycerol. |
| Preservative: | Sodium azide |
| Precaution of Use: | This product contains sodium azide: a POISONOUS AND HAZARDOUS SUBSTANCE which should be handled by trained staff only. |
| Storage: | -20 °C |
| Storage Comment: | Stable at -20°C for at least 1 year. |
| Expiry Date: | 12 months |



Western Blotting

Image 1. Western blot analysis of extracts from rat liver cells, using Claudin 7 (Ab-210) Antibody. The lane on the right is treated with the synthesized peptide.



Immunohistochemistry

Image 2. Immunohistochemistry analysis of paraffin-embedded human prostate carcinoma tissue, using Claudin 7 (Ab-210) Antibody. The picture on the right is treated with the synthesized peptide.