

Datasheet for ABIN1533207
anti-ACTG2 antibody (AA 1-50)[Go to Product page](#)

2 Images

1 Publication

Overview

Quantity:	100 µg
Target:	ACTG2
Binding Specificity:	AA 1-50
Reactivity:	Human, Mouse, Rat
Host:	Rabbit
Clonality:	Polyclonal
Conjugate:	This ACTG2 antibody is un-conjugated
Application:	Western Blotting (WB), Immunohistochemistry (IHC), ELISA

Product Details

Immunogen:	The antiserum was produced against synthesized peptide derived from human Actin-gamma2.
Isotype:	IgG
Specificity:	Actin-gamma2 Antibody detects endogenous levels of total Actin-gamma2 protein.
Purification:	The antibody was purified from rabbit antiserum by affinity-chromatography using immunogen.
Purity:	> 95 %

Target Details

Target:	ACTG2
Alternative Name:	Actin-Gamma2 (ACTG2 Products)
Background:	Synonyms: Actin gamma-enteric smooth muscle, Smooth muscle gamma-actin, Gamma-2-

Target Details

	actin, Alpha-actin-3, ACTG2, ACTA3, ACTL3, ACTSG NCBI Gene Symbol: ACTG2
Molecular Weight:	41 kDa
Gene ID:	72
OMIM:	102545
UniProt:	P63267

Application Details

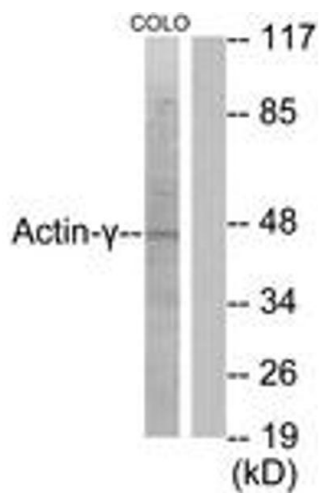
Application Notes:	WB: 1:500~1:1000 IHC: 1:50~1:100 ELISA: 1:20000
Comment:	Unigene-Number: Hs.516105 (NCBI Gene Symbol: ACTG2)
Restrictions:	For Research Use only

Handling

Format:	Liquid
Concentration:	1 mg/mL
Buffer:	phosphate buffered saline (without Mg ²⁺ and Ca ²⁺), pH 7.4, 150 mM NaCl, 0.02 % sodium azide and 50 % glycerol.
Preservative:	Sodium azide
Precaution of Use:	This product contains sodium azide: a POISONOUS AND HAZARDOUS SUBSTANCE which should be handled by trained staff only.
Storage:	-20 °C
Storage Comment:	Stable at -20°C for at least 1 year.
Expiry Date:	12 months

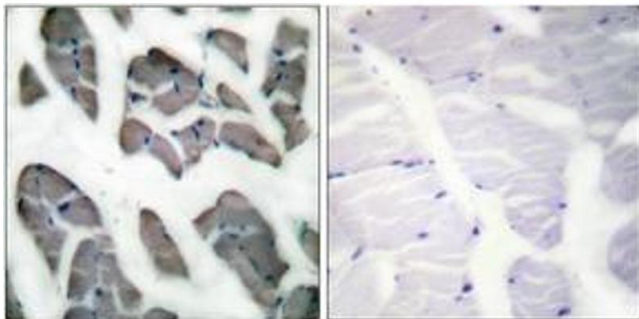
Publications

Product cited in:	Morioka, Takano-Ohmuro: "Localizations of γ -Actins in Skin, Hair, Vibrissa, Arrector Pili Muscle and Other Hair Appendages of Developing Rats." in: Acta histochemica et cytochemica , Vol. 49, Issue 2, pp. 47-65, (2016) (PubMed).
-------------------	---



Western Blotting

Image 1. Western blot analysis of extracts from COLO205 cells, using Actin-gamma2 Antibody. The lane on the right is treated with the synthesized peptide.



Immunohistochemistry

Image 2. Immunohistochemistry analysis of paraffin-embedded human skeletal muscle tissue, using Actin-gamma2 Antibody. The picture on the right is treated with the synthesized peptide.