

Datasheet for ABIN1533208  
**anti-Actin antibody (AA 326-375)**



[Go to Product page](#)

2 Images

## Overview

Quantity:	100 µL
Target:	Actin
Binding Specificity:	AA 326-375
Reactivity:	Human, Rat, Mouse
Host:	Rabbit
Clonality:	Polyclonal
Conjugate:	This Actin antibody is un-conjugated
Application:	Western Blotting (WB), Immunohistochemistry (IHC), ELISA

## Product Details

Immunogen:	The antiserum was produced against synthesized peptide derived from human Actin.
Isotype:	IgG
Specificity:	Actin-pan Antibody detects endogenous levels of total Actin protein.
Purification:	The antibody was purified from rabbit antiserum by affinity-chromatography using immunogen.
Purity:	> 95 %

## Target Details

Target:	Actin
Abstract:	<a href="#">Actin Products</a>
Background:	Synonyms: ACTB, Actin, cytoplasmic 1, Beta-actin

## Target Details

---

NCBI Gene Symbol: ACTG1

Molecular Weight: 41 kDa

Gene ID: 60, 71

OMIM: 102630

UniProt: [P60709](#), [Q9BYX7](#), [P63261](#)

## Application Details

---

Application Notes: WB: 1:500~1:1000 IHC: 1:50~1:100 ELISA: 1:10000

Comment: Unigene-Number: Hs.520640, Hs.708120, Hs.724471, Hs.631267, Hs.654289, Hs.514581 (NCBI Gene Symbol: ACTG1)

Restrictions: For Research Use only

## Handling

---

Format: Liquid

Concentration: 1 mg/mL

Buffer: phosphate buffered saline (without Mg<sup>2+</sup> and Ca<sup>2+</sup>), pH 7.4, 150 mM NaCl, 0.02 % sodium azide and 50 % glycerol.

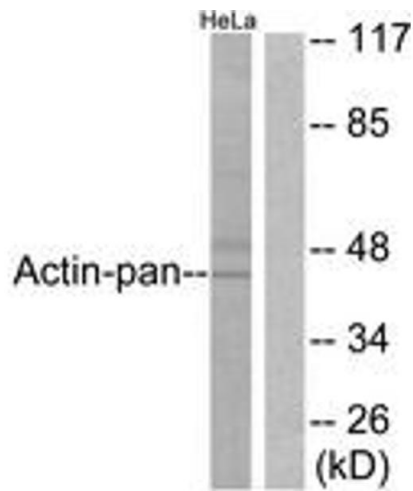
Preservative: Sodium azide

Precaution of Use: This product contains sodium azide: a POISONOUS AND HAZARDOUS SUBSTANCE which should be handled by trained staff only.

Storage: -20 °C

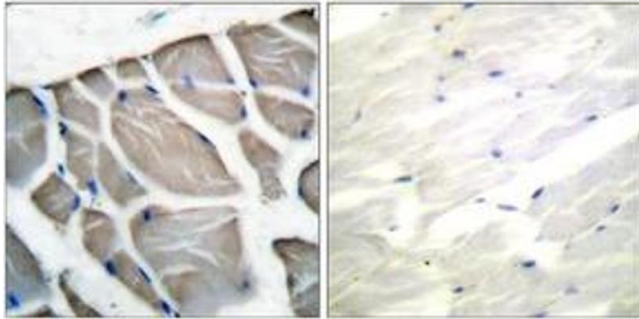
Storage Comment: Stable at -20°C for at least 1 year.

Expiry Date: 12 months



### Western Blotting

**Image 1.** Western blot analysis of extracts from HeLa cells, using Actin-pan Antibody. The lane on the right is treated with the synthesized peptide.



### Immunohistochemistry

**Image 2.** Immunohistochemistry analysis of paraffin-embedded human skeletal muscle tissue, using Actin-pan Antibody. The picture on the right is treated with the synthesized peptide.