

Datasheet for ABIN1533217  
**anti-BIM antibody (AA 1-50)**



[Go to Product page](#)

2 Images

## Overview

|                      |  |
|----------------------|--|
| Quantity:            | 100 µL   |
| Target:              | BIM (BCL2L11)  |
| Binding Specificity: | AA 1-50  |
| Reactivity:          | Human, Mouse, Rat  |
| Host:                | Rabbit   |
| Clonality:           | Polyclonal   |
| Conjugate:           | This BIM antibody is un-conjugated                       |
| Application:         | Western Blotting (WB), Immunohistochemistry (IHC), ELISA |

## Product Details

|               |   |
|---------------|---|
| Immunogen:    | The antiserum was produced against synthesized peptide derived from human BIM.              |
| Isotype:      | IgG   |
| Specificity:  | BIM Antibody detects endogenous levels of total BIM protein.                                |
| Purification: | The antibody was purified from rabbit antiserum by affinity-chromatography using immunogen. |
| Purity:       | > 95 %  |

## Target Details

|                   |  |
|-------------------|--|
| Target:           | BIM (BCL2L11)  |
| Alternative Name: | BIM ( <a href="#">BCL2L11 Products</a> )   |
| Background:       | Synonyms: BCL2 interacting mediator of cell death, BCL2-like protein 11, BCL2L11, BOD, Bcl-2 |

## Target Details

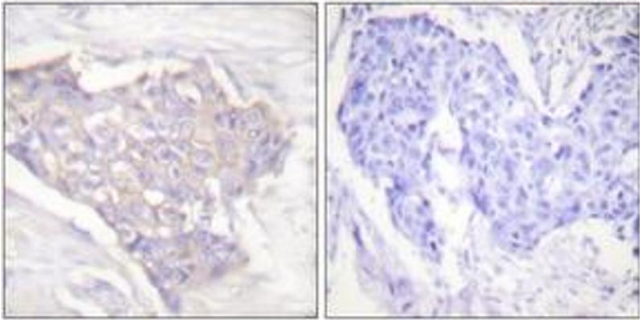
|                   |  |
|-------------------|--|
|                   | related ovarian death protein, Bcl2 interacting mediator of cell death, Bcl2-like protein 11<br>NCBI Gene Symbol: BCL2L11  |
| Molecular Weight: | 22 kDa   |
| Gene ID:          | 10018  |
| OMIM:             | 603827   |
| UniProt:          | <a href="#">O43521</a>   |
| Pathways:         | <a href="#">PI3K-Akt Signaling</a> , <a href="#">Neurotrophin Signaling Pathway</a> , <a href="#">Tube Formation</a> , <a href="#">Positive Regulation of Endopeptidase Activity</a> |

## Application Details

|                    |   |
|--------------------|---|
| Application Notes: | WB: 1:500~1:1000 IHC: 1:50~1:100 ELISA: 1:20000       |
| Comment:           | Unigene-Number: Hs.469658 (NCBI Gene Symbol: BCL2L11) |
| Restrictions:      | For Research Use only                                 |

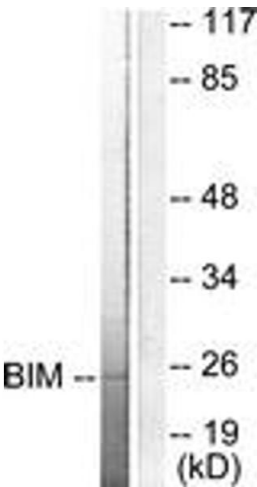
## Handling

|                    |   |
|--------------------|---|
| Format:            | Liquid  |
| Concentration:     | 1 mg/mL   |
| Buffer:            | phosphate buffered saline (without Mg <sup>2+</sup> and Ca <sup>2+</sup> ), pH 7.4, 150 mM NaCl, 0.02 % sodium azide and 50 % glycerol. |
| Preservative:      | Sodium azide  |
| Precaution of Use: | This product contains sodium azide: a POISONOUS AND HAZARDOUS SUBSTANCE which should be handled by trained staff only.                  |
| Storage:           | -20 °C  |
| Storage Comment:   | Stable at -20°C for at least 1 year.  |
| Expiry Date:       | 12 months   |



**Immunohistochemistry (Paraffin-embedded Sections)**

**Image 1.** Immunohistochemistry analysis of paraffin-embedded human breast carcinoma tissue, using BIM Antibody. The picture on the right is treated with the synthesized peptide.



**Western Blotting**

**Image 2.** Western blot analysis of extracts from COS7 cells, using BIM Antibody. The lane on the right is treated with the synthesized peptide.