



Datasheet for ABIN1533218
anti-Caspase 10 antibody (AA 430-479)



[Go to Product page](#)

3 Images

Overview

Quantity:	100 µL
Target:	Caspase 10 (CASP10)
Binding Specificity:	AA 430-479
Reactivity:	Human
Host:	Rabbit
Clonality:	Polyclonal
Conjugate:	This Caspase 10 antibody is un-conjugated
Application:	Western Blotting (WB), ELISA, Immunohistochemistry (IHC), Immunofluorescence (IF)

Product Details

Immunogen:	The antiserum was produced against synthesized peptide derived from human Caspase 10.
Isotype:	IgG
Specificity:	Caspase 10 Antibody detects endogenous levels of total Caspase 10 protein.
Purification:	The antibody was purified from rabbit antiserum by affinity-chromatography using immunogen.
Purity:	> 95 %

Target Details

Target:	Caspase 10 (CASP10)
Alternative Name:	Caspase 10 (CASP10 Products)
Background:	Synonyms: ALPS2, apoptotic protease Mch-4, CASP-10, CASPA, caspase-10, FADD-like ICE2,

Target Details

FAS-associated death domain protein interleukin-1B-convert
NCBI Gene Symbol: CASP10

Molecular Weight: 58 kDa

Gene ID: 843, 4

OMIM: 601762

Pathways: [Apoptosis, Caspase Cascade in Apoptosis](#)

Application Details

Application Notes: WB: 1:500~1:1000 IHC: 1:50~1:100 IF: 1:100~1:500 ELISA: 1:10000

Comment: Unigene-Number: Hs.5353 (NCBI Gene Symbol: CASP10)

Restrictions: For Research Use only

Handling

Format: Liquid

Concentration: 1 mg/mL

Buffer: phosphate buffered saline (without Mg²⁺ and Ca²⁺), pH 7.4, 150 mM NaCl, 0.02 % sodium azide and 50 % glycerol.

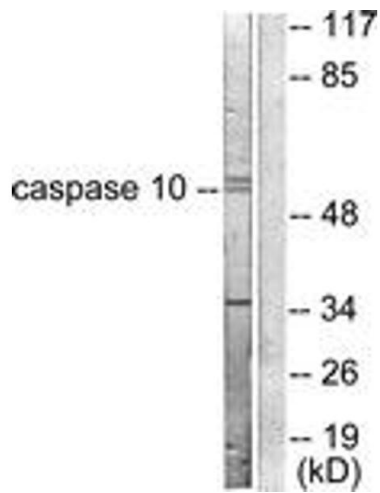
Preservative: Sodium azide

Precaution of Use: This product contains sodium azide: a POISONOUS AND HAZARDOUS SUBSTANCE which should be handled by trained staff only.

Storage: -20 °C

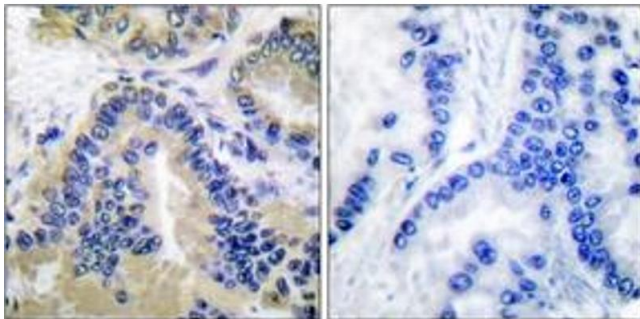
Storage Comment: Stable at -20°C for at least 1 year.

Expiry Date: 12 months



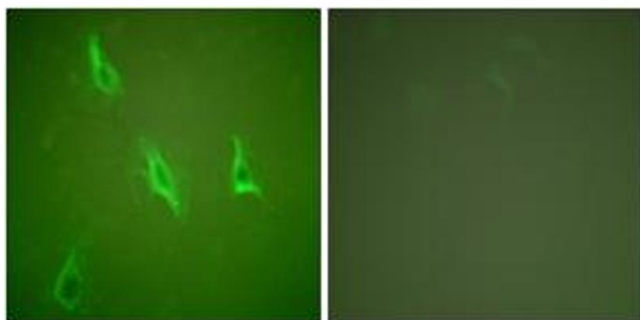
Western Blotting

Image 1. Western blot analysis of extracts from HeLa cells, using Caspase 10 Antibody. The lane on the right is treated with the synthesized peptide.



Immunohistochemistry

Image 2. Immunohistochemistry analysis of paraffin-embedded human lung carcinoma tissue, using Caspase 10 Antibody. The picture on the right is treated with the synthesized peptide.



Immunofluorescence

Image 3. Immunofluorescence analysis of HeLa cells, using Caspase 10 Antibody. The picture on the right is treated with the synthesized peptide.