

Datasheet for ABIN1533220
anti-CTNNA1 antibody (AA 857-906)



[Go to Product page](#)

2 Images

Overview

Quantity:	100 µL
Target:	CTNNA1
Binding Specificity:	AA 857-906
Reactivity:	Human, Mouse, Rat
Host:	Rabbit
Clonality:	Polyclonal
Conjugate:	This CTNNA1 antibody is un-conjugated
Application:	Western Blotting (WB), Immunohistochemistry (IHC), ELISA

Product Details

Immunogen:	The antiserum was produced against synthesized peptide derived from human Catenin-alpha1.
Isotype:	IgG
Specificity:	Catenin-alpha1 Antibody detects endogenous levels of total Catenin-alpha1 protein.
Purification:	The antibody was purified from rabbit antiserum by affinity-chromatography using immunogen.
Purity:	> 95 %

Target Details

Target:	CTNNA1
Alternative Name:	Catenin-Alpha1 (CTNNA1 Products)
Background:	Synonyms: 102 kDa cadherin-associated protein, Alpha E-catenin, CATNA1, CTN1, Cadherin-

Target Details

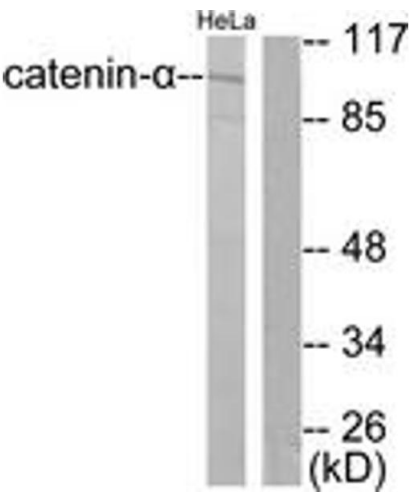
	associated protein, catenin alpha-1 NCBI Gene Symbol: CTNNA1
Molecular Weight:	100 kDa
Gene ID:	1495, 1496
OMIM:	116805
UniProt:	P35221 , P26232
Pathways:	Regulation of Muscle Cell Differentiation , Cell-Cell Junction Organization , Maintenance of Protein Location

Application Details

Application Notes:	WB: 1:500~1:1000 IHC: 1:50~1:100 ELISA: 1:5000
Comment:	Unigene-Number: Hs.445981, Hs.656653, Hs.167368, Hs.476018 (NCBI Gene Symbol: CTNNA1)
Restrictions:	For Research Use only

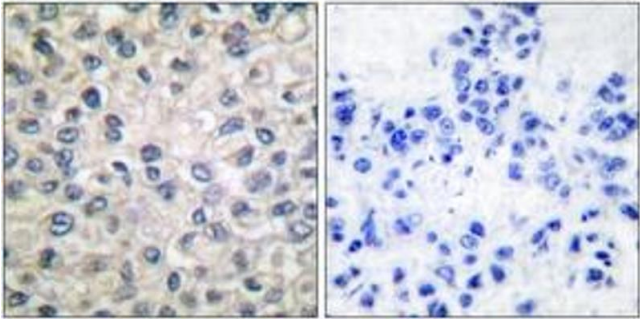
Handling

Format:	Liquid
Concentration:	1 mg/mL
Buffer:	phosphate buffered saline (without Mg ²⁺ and Ca ²⁺), pH 7.4, 150 mM NaCl, 0.02 % sodium azide and 50 % glycerol.
Preservative:	Sodium azide
Precaution of Use:	This product contains sodium azide: a POISONOUS AND HAZARDOUS SUBSTANCE which should be handled by trained staff only.
Storage:	-20 °C
Storage Comment:	Stable at -20°C for at least 1 year.
Expiry Date:	12 months



Western Blotting

Image 1. Western blot analysis of extracts from HeLa cells, using Catenin-alpha1 Antibody. The lane on the right is treated with the synthesized peptide.



Immunohistochemistry

Image 2. Immunohistochemistry analysis of paraffin-embedded human breast carcinoma tissue, using Catenin-alpha1 Antibody. The picture on the right is treated with the synthesized peptide.