

Datasheet for ABIN1533223
anti-Claudin 4 antibody (AA 160-209)

2 Images

[Go to Product page](#)

Overview

Quantity:	100 µg
Target:	Claudin 4 (CLDN4)
Binding Specificity:	AA 160-209
Reactivity:	Human, Mouse, Rat
Host:	Rabbit
Clonality:	Polyclonal
Conjugate:	This Claudin 4 antibody is un-conjugated
Application:	Western Blotting (WB), ELISA, Immunohistochemistry (IHC)

Product Details

Immunogen:	The antiserum was produced against synthesized peptide derived from human Claudin 4.
Isotype:	IgG
Specificity:	Claudin 4 Antibody detects endogenous levels of total Claudin 4 protein.
Purification:	The antibody was purified from rabbit antiserum by affinity-chromatography using immunogen.
Purity:	> 95 %

Target Details

Target:	Claudin 4 (CLDN4)
Alternative Name:	Claudin 4 (CLDN4 Products)
Background:	Synonyms: Claudin-4, CLD4, CLDN4, Clostridium perfringens enterotoxin receptor, CPE-

Target Details

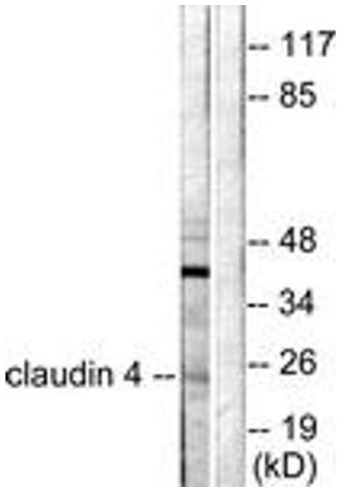
	receptor, CPE-R, CPER, CPETR1, WBSCR8, Williams-Beuren syndrome chromosome region 8 protein NCBI Gene Symbol: CLDN4
Molecular Weight:	22 kDa
Gene ID:	1364
OMIM:	602909
UniProt:	O14493
Pathways:	Hepatitis C

Application Details

Application Notes:	WB: 1:500~1:1000 IHC: 1:50~1:100 ELISA: 1:5000
Comment:	Unigene-Number: Hs.647036, Hs.699253 (NCBI Gene Symbol: CLDN4)
Restrictions:	For Research Use only

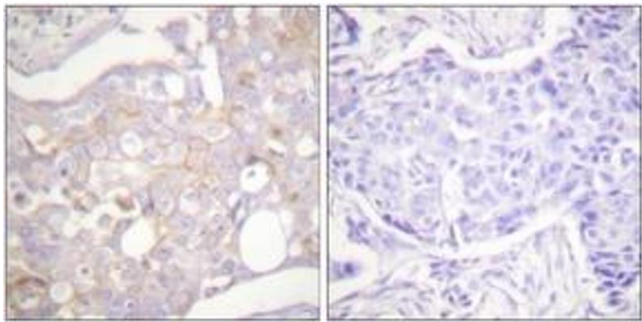
Handling

Format:	Liquid
Concentration:	1 mg/mL
Buffer:	phosphate buffered saline (without Mg ²⁺ and Ca ²⁺), pH 7.4, 150 mM NaCl, 0.02 % sodium azide and 50 % glycerol.
Preservative:	Sodium azide
Precaution of Use:	This product contains sodium azide: a POISONOUS AND HAZARDOUS SUBSTANCE which should be handled by trained staff only.
Storage:	-20 °C
Storage Comment:	Stable at -20°C for at least 1 year.
Expiry Date:	12 months



Western Blotting

Image 1. Western blot analysis of extracts from HeLa cells, using Claudin 4 Antibody. The lane on the right is treated with the synthesized peptide.



Immunohistochemistry

Image 2. Immunohistochemistry analysis of paraffin-embedded human breast carcinoma tissue, using Claudin 4 Antibody. The picture on the right is treated with the synthesized peptide.