

Datasheet for ABIN1533224
anti-Claudin 1 antibody (AA 162-211)



[Go to Product page](#)

2 Images

Overview

Quantity:	100 µL
Target:	Claudin 1 (CLDN1)
Binding Specificity:	AA 162-211
Reactivity:	Human, Rat, Mouse
Host:	Rabbit
Clonality:	Polyclonal
Conjugate:	This Claudin 1 antibody is un-conjugated
Application:	Western Blotting (WB), Immunohistochemistry (IHC), ELISA

Product Details

Immunogen:	The antiserum was produced against synthesized peptide derived from human Claudin 1.
Isotype:	IgG
Specificity:	Claudin 1 Antibody detects endogenous levels of total Claudin 1 protein.
Purification:	The antibody was purified from rabbit antiserum by affinity-chromatography using immunogen.
Purity:	> 95 %

Target Details

Target:	Claudin 1 (CLDN1)
Alternative Name:	Claudin 1 (CLDN1 Products)
Background:	Synonyms: CLD1, CLDN1, SEMP1, Senescence-associated epithelial membrane protein,

Target Details

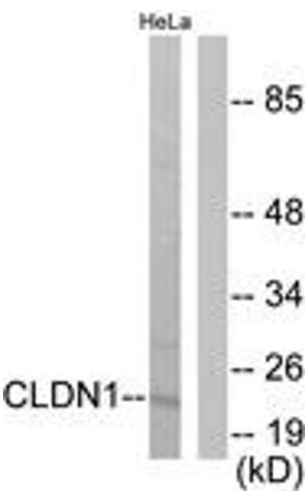
	NCBI Gene Symbol: CLDN1
Molecular Weight:	22 kDa
Gene ID:	9076
OMIM:	603718
UniProt:	O95832
Pathways:	Cell-Cell Junction Organization , Hepatitis C

Application Details

Application Notes:	WB: 1:500~1:1000 IHC: 1:50~1:100 ELISA: 1:5000
Comment:	Unigene-Number: Hs.439060 (NCBI Gene Symbol: CLDN1)
Restrictions:	For Research Use only

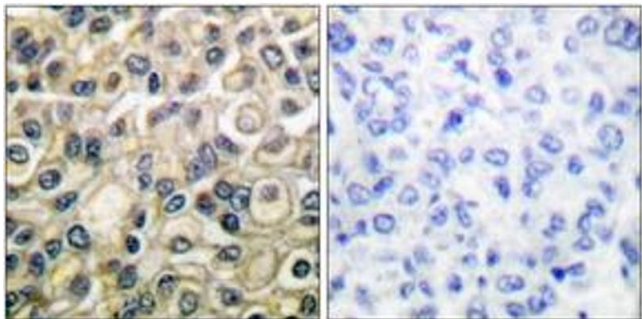
Handling

Format:	Liquid
Concentration:	1 mg/mL
Buffer:	phosphate buffered saline (without Mg ²⁺ and Ca ²⁺), pH 7.4, 150 mM NaCl, 0.02 % sodium azide and 50 % glycerol.
Preservative:	Sodium azide
Precaution of Use:	This product contains sodium azide: a POISONOUS AND HAZARDOUS SUBSTANCE which should be handled by trained staff only.
Storage:	-20 °C
Storage Comment:	Stable at -20°C for at least 1 year.
Expiry Date:	12 months



Western Blotting

Image 1. Western blot analysis of extracts from HeLa cells, using Claudin 1 Antibody. The lane on the right is treated with the synthesized peptide.



Immunohistochemistry

Image 2. Immunohistochemistry analysis of paraffin-embedded human breast carcinoma tissue, using Claudin 1 Antibody. The picture on the right is treated with the synthesized peptide.