

Datasheet for ABIN1533225

**anti-Claudin 2 antibody (AA 181-230)****2** Images[Go to Product page](#)

## Overview

Quantity:	100 µL
Target:	Claudin 2 (CLDN2)
Binding Specificity:	AA 181-230
Reactivity:	Human, Mouse
Host:	Rabbit
Clonality:	Polyclonal
Conjugate:	This Claudin 2 antibody is un-conjugated
Application:	Western Blotting (WB), ELISA, Immunohistochemistry (IHC)

## Product Details

Immunogen:	The antiserum was produced against synthesized peptide derived from human Claudin 2.
Isotype:	IgG
Specificity:	Claudin 2 Antibody detects endogenous levels of total Claudin 2 protein.
Purification:	The antibody was purified from rabbit antiserum by affinity-chromatography using immunogen.
Purity:	> 95 %

## Target Details

Target:	Claudin 2 (CLDN2)
Alternative Name:	Claudin 2 ( <a href="#">CLDN2 Products</a> )
Background:	Synonyms: CLD2, CLDN2, SP82, claudin-2

### Target Details

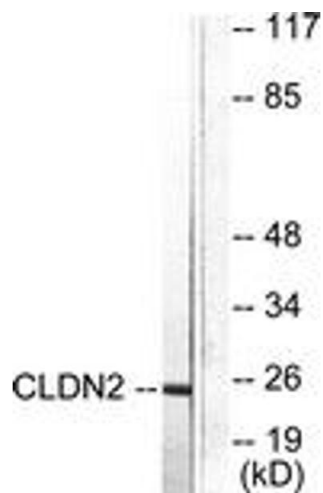
	NCBI Gene Symbol: CLDN2
Molecular Weight:	24 kDa
Gene ID:	9075
OMIM:	300520
UniProt:	<a href="#">P57739</a>
Pathways:	<a href="#">Hepatitis C</a>

### Application Details

Application Notes:	WB: 1:500~1:1000 IHC: 1:50~1:100 ELISA: 1:5000
Comment:	Unigene-Number: Hs.522746, Hs.724766 (NCBI Gene Symbol: CLDN2)
Restrictions:	For Research Use only

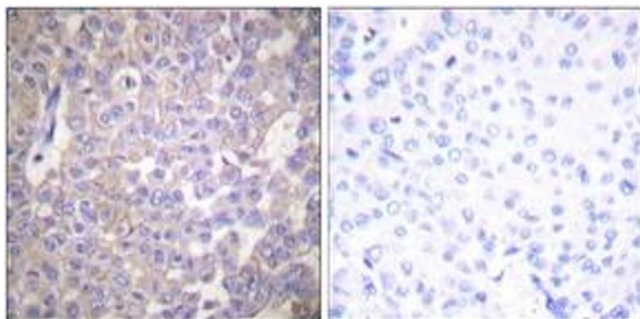
### Handling

Format:	Liquid
Concentration:	1 mg/mL
Buffer:	phosphate buffered saline (without Mg <sup>2+</sup> and Ca <sup>2+</sup> ), pH 7.4, 150 mM NaCl, 0.02 % sodium azide and 50 % glycerol.
Preservative:	Sodium azide
Precaution of Use:	This product contains sodium azide: a POISONOUS AND HAZARDOUS SUBSTANCE which should be handled by trained staff only.
Storage:	-20 °C
Storage Comment:	Stable at -20°C for at least 1 year.
Expiry Date:	12 months



#### Western Blotting

**Image 1.** Western blot analysis of extracts from NIH-3T3 cells, using Claudin 2 Antibody. The lane on the right is treated with the synthesized peptide.



#### Immunohistochemistry

**Image 2.** Immunohistochemistry analysis of paraffin-embedded human breast carcinoma tissue, using Claudin 2 Antibody. The picture on the right is treated with the synthesized peptide.