

Datasheet for ABIN1533226  
**anti-Claudin 3 antibody (AA 171-220)**[Go to Product page](#)

## 3 Images

## Overview

Quantity:	100 µg
Target:	Claudin 3 (CLDN3)
Binding Specificity:	AA 171-220
Reactivity:	Human, Mouse, Rat
Host:	Rabbit
Clonality:	Polyclonal
Application:	Western Blotting (WB), ELISA, Immunohistochemistry (IHC), Immunofluorescence (IF)

## Product Details

Immunogen:	The antiserum was produced against synthesized peptide derived from human Claudin 3.
Isotype:	IgG
Specificity:	Claudin 3 Antibody detects endogenous levels of total Claudin 3 protein.
Purification:	The antibody was purified from rabbit antiserum by affinity-chromatography using immunogen.
Purity:	> 95 %

## Target Details

Target:	Claudin 3 (CLDN3)
Alternative Name:	Claudin 3 ( <a href="#">CLDN3 Products</a> )
Background:	Synonyms: Claudin-3, Clostridium perfringens enterotoxin receptor 2, CPE-receptor 2, CPE-R 2, Ventral prostate.1 protein homolog, HRVP1, CLDN3, C7orf1, CPETR2

## Target Details

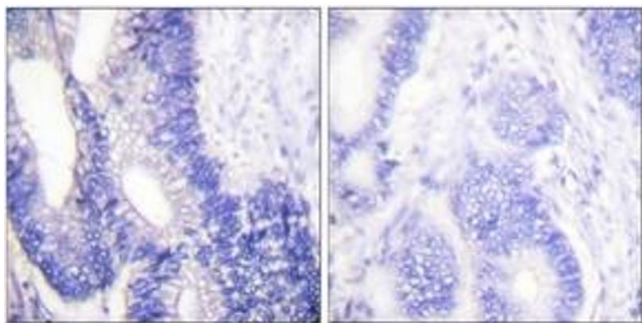
	NCBI Gene Symbol: CLDN3
Molecular Weight:	23 kDa
Gene ID:	1365
OMIM:	602910
UniProt:	<a href="#">O15551</a>
Pathways:	<a href="#">Hepatitis C</a>

## Application Details

Application Notes:	WB: 1:500~1:1000 IHC: 1:50~1:100 IF: 1:100~1:500 ELISA: 1:40000
Comment:	Unigene-Number: Hs.647023 (NCBI Gene Symbol: CLDN3)
Restrictions:	For Research Use only

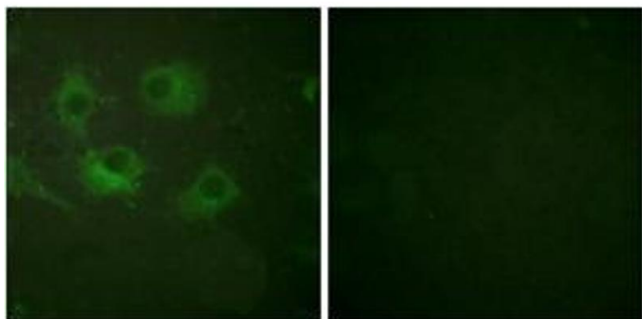
## Handling

Format:	Liquid
Concentration:	1 mg/mL
Buffer:	phosphate buffered saline (without Mg <sup>2+</sup> and Ca <sup>2+</sup> ), pH 7.4, 150 mM NaCl, 0.02 % sodium azide and 50 % glycerol.
Preservative:	Sodium azide
Precaution of Use:	This product contains sodium azide: a POISONOUS AND HAZARDOUS SUBSTANCE which should be handled by trained staff only.
Storage:	-20 °C
Storage Comment:	Stable at -20°C for at least 1 year.
Expiry Date:	12 months



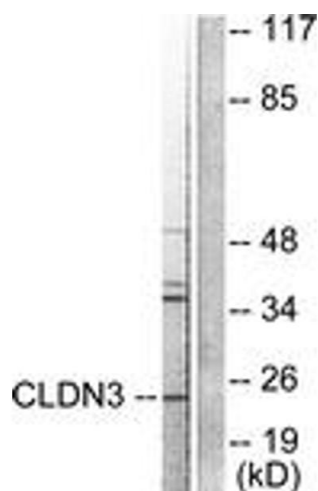
### Immunohistochemistry

**Image 1.** Immunohistochemistry analysis of paraffin-embedded human colon carcinoma tissue, using Claudin 3 Antibody. The picture on the right is treated with the synthesized peptide.



### Immunofluorescence

**Image 2.** Immunofluorescence analysis of HuvEc cells, using Claudin 3 Antibody. The picture on the right is treated with the synthesized peptide.



### Western Blotting

**Image 3.** Western blot analysis of extracts from HuvEc cells, using Claudin 3 Antibody. The lane on the right is treated with the synthesized peptide.