



[Go to Product page](#)

Datasheet for ABIN1533228
anti-Exportin 2 antibody (AA 1-50)

3 Images

Overview

Quantity:	100 µg
Target:	Exportin 2 (CSE1L)
Binding Specificity:	AA 1-50
Reactivity:	Human
Host:	Rabbit
Clonality:	Polyclonal
Conjugate:	This Exportin 2 antibody is un-conjugated
Application:	Western Blotting (WB), ELISA, Immunofluorescence (IF), Immunohistochemistry (IHC), Immunoprecipitation (IP)

Product Details

Immunogen:	The antiserum was produced against synthesized peptide derived from human CSE1L.
Isotype:	IgG
Specificity:	CSE1L Antibody detects endogenous levels of total CSE1L protein.
Purification:	The antibody was purified from rabbit antiserum by affinity-chromatography using immunogen.
Purity:	> 95 %

Target Details

Target:	Exportin 2 (CSE1L)
Alternative Name:	CSE1L (CSE1L Products)

Target Details

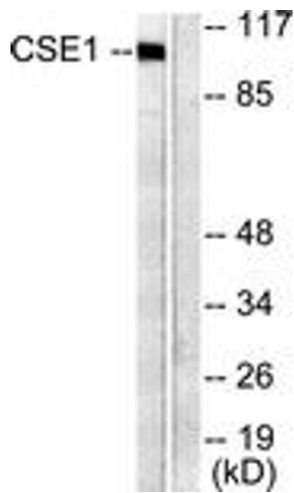
Background:	Synonyms: CAS, cellular apoptosis susceptibility protein, chromosome segregation 1-like protein, CSE1, CSE1 chromosome segregation 1-like, Exp2, exportin-2, importin-alpha re-exporter, XPO2 NCBI Gene Symbol: CSE1L
Molecular Weight:	110 kDa
Gene ID:	1434
OMIM:	601342
UniProt:	P55060
Pathways:	Protein targeting to Nucleus

Application Details

Application Notes:	WB: 1:500~1:1000 IHC: 1:50~1:100 IF: 1:100~1:500 ELISA: 1:40000
Comment:	Unigene-Number: Hs.90073 (NCBI Gene Symbol: CSE1L)
Restrictions:	For Research Use only

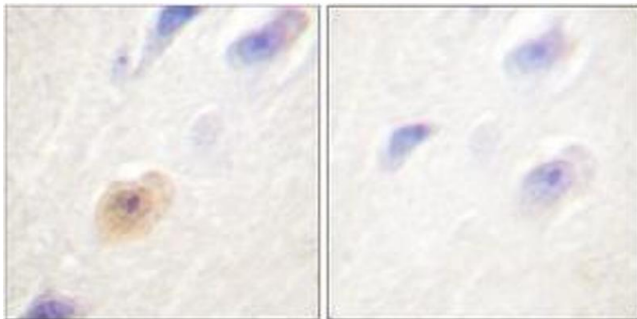
Handling

Format:	Liquid
Concentration:	1 mg/mL
Buffer:	phosphate buffered saline (without Mg ²⁺ and Ca ²⁺), pH 7.4, 150 mM NaCl, 0.02 % sodium azide and 50 % glycerol.
Preservative:	Sodium azide
Precaution of Use:	This product contains sodium azide: a POISONOUS AND HAZARDOUS SUBSTANCE which should be handled by trained staff only.
Storage:	-20 °C
Storage Comment:	Stable at -20°C for at least 1 year.
Expiry Date:	12 months



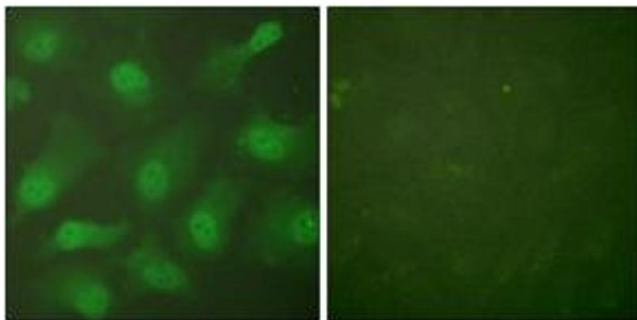
Western Blotting

Image 1. Western blot analysis of extracts from 293 cells, using CSE1L Antibody. The lane on the right is treated with the synthesized peptide.



Immunohistochemistry

Image 2. Immunohistochemistry analysis of paraffin-embedded human brain tissue, using CSE1L Antibody. The picture on the right is treated with the synthesized peptide.



Immunofluorescence

Image 3. Immunofluorescence analysis of HeLa cells, using CSE1L Antibody. The picture on the right is treated with the synthesized peptide.