

Datasheet for ABIN1533236

anti-Collagen Type I antibody (AA 1-50)**2** Images[Go to Product page](#)

Overview

Quantity:	100 µL
Target:	Collagen Type I (COL1)
Binding Specificity:	AA 1-50
Reactivity:	Human, Rat, Mouse
Host:	Rabbit
Clonality:	Polyclonal
Conjugate:	This Collagen Type I antibody is un-conjugated
Application:	ELISA, Immunohistochemistry (IHC), Immunofluorescence (IF)

Product Details

Immunogen:	The antiserum was produced against synthesized peptide derived from human Collagen I.
Isotype:	IgG
Specificity:	Collagen I Antibody detects endogenous levels of total Collagen I protein.
Purification:	The antibody was purified from rabbit antiserum by affinity-chromatography using immunogen.
Purity:	> 95 %

Target Details

Target:	Collagen Type I (COL1)
Alternative Name:	Collagen I (COL1 Products)
Background:	Synonyms: alpha 2 type i collagen, co1a2, col1a2, collagen, type i, alpha 2, oi4

Target Details

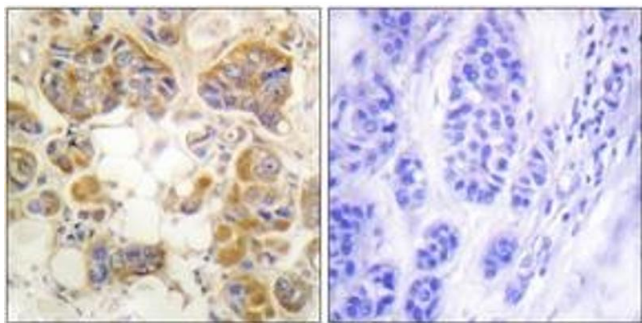
	NCBI Gene Symbol: COL1A2
Molecular Weight:	129 kDa
Gene ID:	1278
OMIM:	120160
UniProt:	P08123

Application Details

Application Notes:	IHC: 1:50~1:100 IF: 1:100~1:500 ELISA: 1:5000
Comment:	Unigene-Number: Hs.489142 (NCBI Gene Symbol: COL1A2)
Restrictions:	For Research Use only

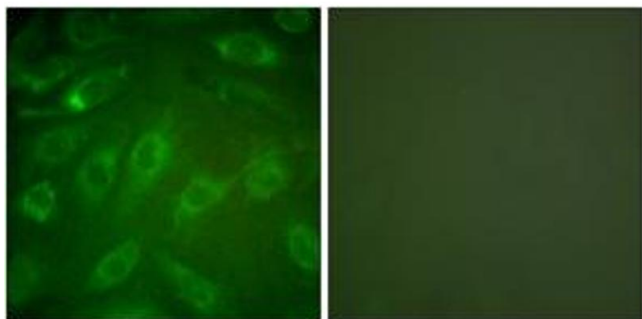
Handling

Format:	Liquid
Concentration:	1 mg/mL
Buffer:	phosphate buffered saline (without Mg ²⁺ and Ca ²⁺), pH 7.4, 150 mM NaCl, 0.02 % sodium azide and 50 % glycerol.
Preservative:	Sodium azide
Precaution of Use:	This product contains sodium azide: a POISONOUS AND HAZARDOUS SUBSTANCE which should be handled by trained staff only.
Storage:	-20 °C
Storage Comment:	Stable at -20°C for at least 1 year.
Expiry Date:	12 months



Immunohistochemistry

Image 1. Immunohistochemistry analysis of paraffin-embedded human breast carcinoma tissue, using Collagen I Antibody. The picture on the right is treated with the synthesized peptide.



Immunofluorescence

Image 2. Immunofluorescence analysis of NIH-3T3 cells, using Collagen I Antibody. The picture on the right is treated with the synthesized peptide.