



[Go to Product page](#)

Datasheet for ABIN1533237
anti-COL2 antibody (AA 101-150)

3 Images

Overview

Quantity:	100 µL
Target:	COL2
Binding Specificity:	AA 101-150
Reactivity:	Human, Mouse, Rat
Host:	Rabbit
Clonality:	Polyclonal
Conjugate:	This COL2 antibody is un-conjugated
Application:	Western Blotting (WB), ELISA, Immunohistochemistry (IHC), Immunofluorescence (IF)

Product Details

Immunogen:	The antiserum was produced against synthesized peptide derived from human Collagen II.
Isotype:	IgG
Specificity:	Collagen II Antibody detects endogenous levels of total Collagen II protein.
Purification:	The antibody was purified from rabbit antiserum by affinity-chromatography using immunogen.
Purity:	> 95 %

Target Details

Target:	COL2
Alternative Name:	Collagen II (COL2 Products)
Background:	Synonyms: chondrocalcin, CO2A1, collagen alpha-1 (II), collagen, type II, alpha 1

Target Details

NCBI Gene Symbol: COL2A1

Molecular Weight: 141 kDa

Gene ID: 1280

OMIM: 120140

UniProt: [P02458](#)

Application Details

Application Notes: WB: 1:500~1:1000 IHC: 1:50~1:100 IF: 1:100~1:500 ELISA: 1:20000

Comment: Unigene-Number: Hs.408182 (NCBI Gene Symbol: COL2A1)

Restrictions: For Research Use only

Handling

Format: Liquid

Concentration: 1 mg/mL

Buffer: phosphate buffered saline (without Mg²⁺ and Ca²⁺), pH 7.4, 150 mM NaCl, 0.02 % sodium azide and 50 % glycerol.

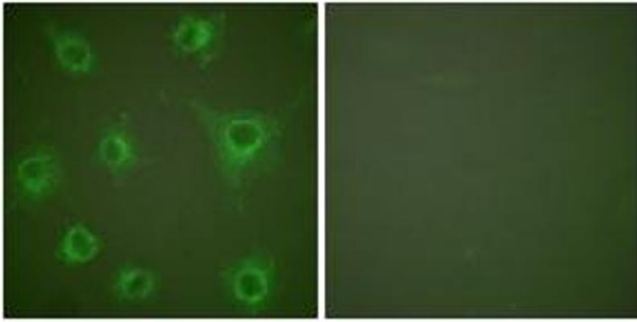
Preservative: Sodium azide

Precaution of Use: This product contains sodium azide: a POISONOUS AND HAZARDOUS SUBSTANCE which should be handled by trained staff only.

Storage: -20 °C

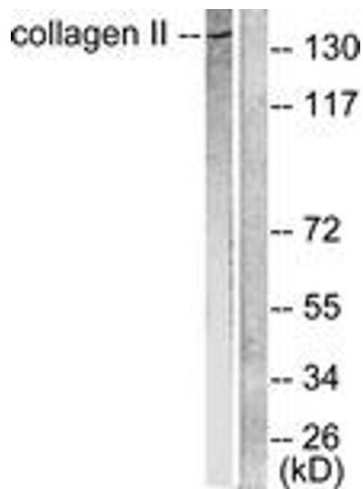
Storage Comment: Stable at -20°C for at least 1 year.

Expiry Date: 12 months



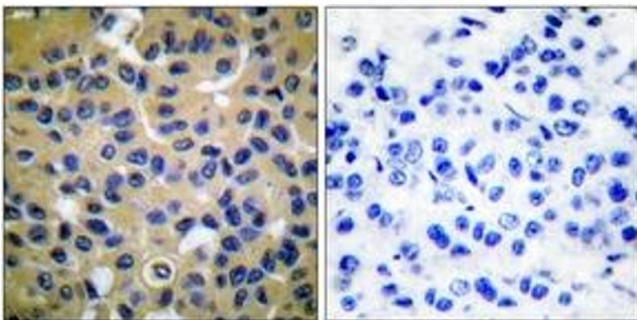
Immunofluorescence

Image 1. Immunofluorescence analysis of COS7 cells, using Collagen II Antibody. The picture on the right is treated with the synthesized peptide.



Western Blotting

Image 2. Western blot analysis of extracts from COL0205 cells, using Collagen II Antibody. The lane on the right is treated with the synthesized peptide.



Immunohistochemistry

Image 3. Immunohistochemistry analysis of paraffin-embedded human breast carcinoma tissue, using Collagen II Antibody. The picture on the right is treated with the synthesized peptide.