



[Go to Product page](#)

Datasheet for ABIN1533241
anti-COX1 antibody (AA 550-599)

2 Images

Overview

Quantity:	100 µL
Target:	COX1
Binding Specificity:	AA 550-599
Reactivity:	Human
Host:	Rabbit
Clonality:	Polyclonal
Conjugate:	This COX1 antibody is un-conjugated
Application:	Western Blotting (WB), ELISA, Immunohistochemistry (IHC)

Product Details

Immunogen:	The antiserum was produced against synthesized peptide derived from human Cox1.
Isotype:	IgG
Specificity:	Cox1 Antibody detects endogenous levels of total Cox1 protein.
Purification:	The antibody was purified from rabbit antiserum by affinity-chromatography using immunogen.
Purity:	> 95 %

Target Details

Target:	COX1
Alternative Name:	Cox1 (COX1 Products)
Background:	Synonyms: COX3, PCOX1, CYCLOOXYGENASE 1, PARTIAL COX1 PROTEINS, PGHS1

Target Details

CYCLOOXYGENASE 3, PROSTAGLANDIN G/H SYNTHASE 1, prostaglandin-endoperoxide synthase 1 (prostaglandin G/H synthase and cyclooxygenase)
NCBI Gene Symbol: PTGS1

Molecular Weight: 68 kDa

Gene ID: 5742

OMIM: 176805

UniProt: [P23219](#)

Pathways: [Proton Transport](#)

Application Details

Application Notes: WB: 1:500~1:1000 IHC: 1:50~1:100 ELISA: 1:40000

Comment: Unigene-Number: Hs.201978 (NCBI Gene Symbol: PTGS1)

Restrictions: For Research Use only

Handling

Format: Liquid

Concentration: 1 mg/mL

Buffer: phosphate buffered saline (without Mg²⁺ and Ca²⁺), pH 7.4, 150 mM NaCl, 0.02 % sodium azide and 50 % glycerol.

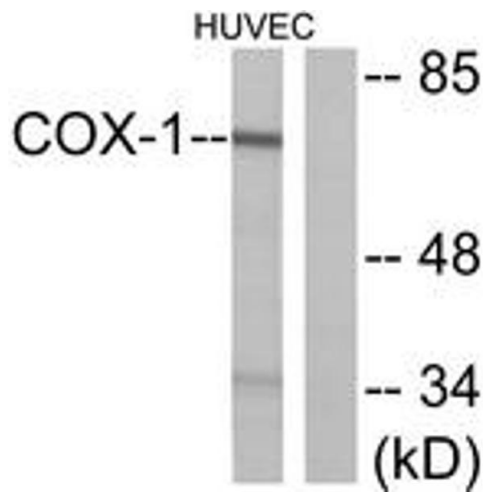
Preservative: Sodium azide

Precaution of Use: This product contains sodium azide: a POISONOUS AND HAZARDOUS SUBSTANCE which should be handled by trained staff only.

Storage: -20 °C

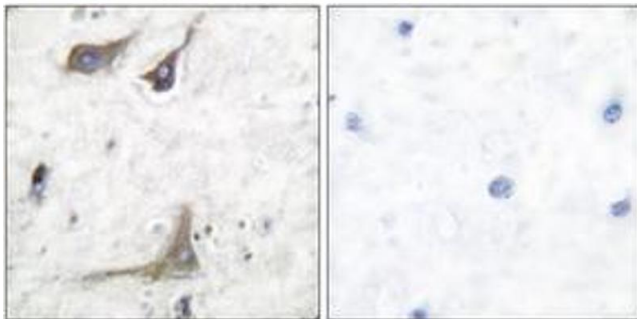
Storage Comment: Stable at -20°C for at least 1 year.

Expiry Date: 12 months



Western Blotting

Image 1. Western blot analysis of extracts from HuvEc cells, using Cox1 Antibody. The lane on the right is treated with the synthesized peptide.



Immunohistochemistry

Image 2. Immunohistochemistry analysis of paraffin-embedded human brain tissue, using Cox1 Antibody. The picture on the right is treated with the synthesized peptide.