

Datasheet for ABIN1533242  
**anti-COX2 antibody (AA 555-604)**[Go to Product page](#)

## 3 Images

## Overview

Quantity:	100 µg
Target:	COX2
Binding Specificity:	AA 555-604
Reactivity:	Human
Host:	Rabbit
Clonality:	Polyclonal
Application:	Western Blotting (WB), Immunohistochemistry (IHC), ELISA, Immunofluorescence (IF)

## Product Details

Immunogen:	The antiserum was produced against synthesized peptide derived from human Cox2.
Isotype:	IgG
Specificity:	Cox2 Antibody detects endogenous levels of total Cox2 protein.
Purification:	The antibody was purified from rabbit antiserum by affinity-chromatography using immunogen.
Purity:	> 95 %

## Target Details

Target:	COX2
Alternative Name:	Cox2 ( <a href="#">COX2 Products</a> )
Background:	Synonyms: COX2, GRIPGHS, PGHS2, CYCLOOXYGENASE 2, GLUCOCORTICOID-REGULATED INFLAMMATORY PROSTAGLANDIN G/H SYNTHASE, PHS II, PROSTAGLANDIN G/H

## Target Details

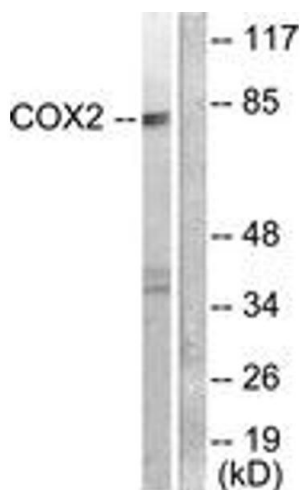
	SYNTHASE 2, prostaglandin-endoperoxide synthase 2 (prostaglandin G/H synthase and cyclooxygenase) NCBI Gene Symbol: PTGS2
Molecular Weight:	68 kDa
Gene ID:	5743
OMIM:	600262
UniProt:	<a href="#">P35354</a>
Pathways:	<a href="#">Brown Fat Cell Differentiation</a> , <a href="#">Positive Regulation of fat Cell Differentiation</a>

## Application Details

Application Notes:	WB: 1:500~1:1000 IHC: 1:50~1:100 IF: 1:100~1:500 ELISA: 1:20000
Comment:	Unigene-Number: Hs.196384 (NCBI Gene Symbol: PTGS2)
Restrictions:	For Research Use only

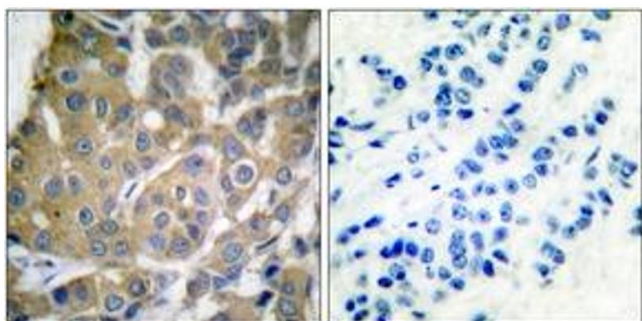
## Handling

Format:	Liquid
Concentration:	1 mg/mL
Buffer:	phosphate buffered saline (without Mg <sup>2+</sup> and Ca <sup>2+</sup> ), pH 7.4, 150 mM NaCl, 0.02 % sodium azide and 50 % glycerol.
Preservative:	Sodium azide
Precaution of Use:	This product contains sodium azide: a POISONOUS AND HAZARDOUS SUBSTANCE which should be handled by trained staff only.
Storage:	-20 °C
Storage Comment:	Stable at -20°C for at least 1 year.
Expiry Date:	12 months



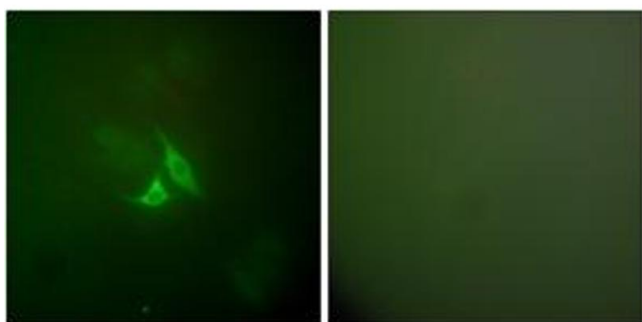
### Western Blotting

**Image 1.** Western blot analysis of extracts from A549 cells, using Cox2 Antibody. The lane on the right is treated with the synthesized peptide.



### Immunohistochemistry

**Image 2.** Immunohistochemistry analysis of paraffin-embedded human breast carcinoma tissue, using Cox2 Antibody. The picture on the right is treated with the synthesized peptide.



### Immunofluorescence

**Image 3.** Immunofluorescence analysis of A549 cells, using Cox2 Antibody. The picture on the right is treated with the synthesized peptide.