



[Go to Product page](#)

Datasheet for ABIN1533244

anti-Cullin 1 antibody (AA 727-776)

3 Images

Overview

Quantity:	100 µg
Target:	Cullin 1 (CUL1)
Binding Specificity:	AA 727-776
Reactivity:	Human, Mouse
Host:	Rabbit
Clonality:	Polyclonal
Conjugate:	This Cullin 1 antibody is un-conjugated
Application:	Western Blotting (WB), ELISA, Immunohistochemistry (IHC), Immunofluorescence (IF)

Product Details

Immunogen:	The antiserum was produced against synthesized peptide derived from human Cullin 1.
Isotype:	IgG
Specificity:	Cullin 1 Antibody detects endogenous levels of total Cullin 1 protein.
Purification:	The antibody was purified from rabbit antiserum by affinity-chromatography using immunogen.
Purity:	> 95 %

Target Details

Target:	Cullin 1 (CUL1)
Alternative Name:	Cullin 1 (CUL1 Products)
Background:	Synonyms: Cullin-1, CUL-1

Target Details

NCBI Gene Symbol: CUL1

Molecular Weight: 89 kDa

Gene ID: 8454

OMIM: 603134

UniProt: [Q13616](#)

Pathways: [Cell Division Cycle](#), [Hedgehog Signaling](#), [Mitotic G1-G1/S Phases](#), [Regulation of Cell Size](#)

Application Details

Application Notes: WB: 1:500~1:1000 IHC: 1:50~1:100 IF: 1:100~1:500 ELISA: 1:20000

Comment: Unigene-Number: Hs.146806 (NCBI Gene Symbol: CUL1)

Restrictions: For Research Use only

Handling

Format: Liquid

Concentration: 1 mg/mL

Buffer: phosphate buffered saline (without Mg²⁺ and Ca²⁺), pH 7.4, 150 mM NaCl, 0.02 % sodium azide and 50 % glycerol.

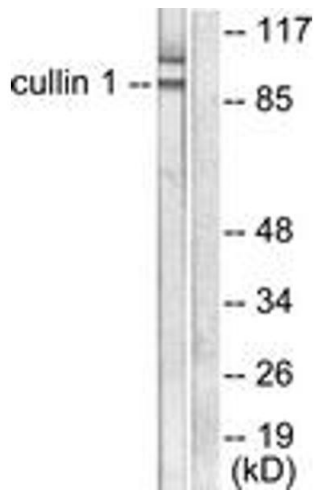
Preservative: Sodium azide

Precaution of Use: This product contains sodium azide: a POISONOUS AND HAZARDOUS SUBSTANCE which should be handled by trained staff only.

Storage: -20 °C

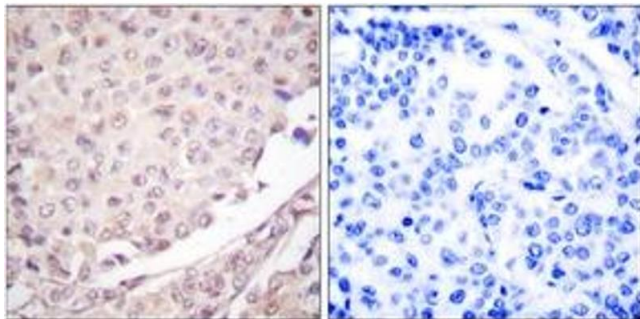
Storage Comment: Stable at -20°C for at least 1 year.

Expiry Date: 12 months



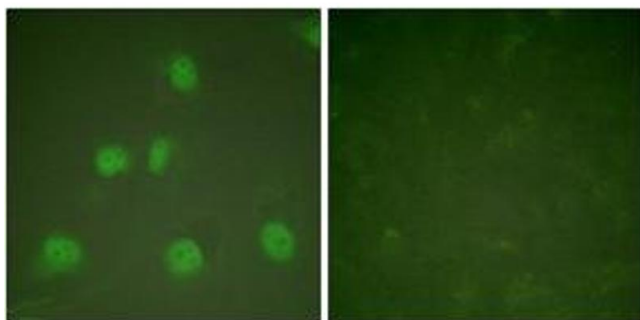
Western Blotting

Image 1. Western blot analysis of extracts from HeLa cells, using Cullin 1 Antibody. The lane on the right is treated with the synthesized peptide.



Immunohistochemistry

Image 2. Immunohistochemistry analysis of paraffin-embedded human lung carcinoma tissue, using Cullin 1 Antibody. The picture on the right is treated with the synthesized peptide.



Immunofluorescence

Image 3. Immunofluorescence analysis of HeLa cells, using Cullin 1 Antibody. The picture on the right is treated with the synthesized peptide.