

Datasheet for ABIN1533245  
**anti-Cullin 2 antibody (AA 696-745)**[Go to Product page](#)

## 3 Images

## Overview

Quantity:	100 µg
Target:	Cullin 2 (CUL2)
Binding Specificity:	AA 696-745
Reactivity:	Human, Mouse
Host:	Rabbit
Clonality:	Polyclonal
Conjugate:	This Cullin 2 antibody is un-conjugated
Application:	Western Blotting (WB), ELISA, Immunohistochemistry (IHC), Immunofluorescence (IF)

## Product Details

Immunogen:	The antiserum was produced against synthesized peptide derived from human Cullin 2.
Isotype:	IgG
Specificity:	Cullin 2 Antibody detects endogenous levels of total Cullin 2 protein.
Purification:	The antibody was purified from rabbit antiserum by affinity-chromatography using immunogen.
Purity:	> 95 %

## Target Details

Target:	Cullin 2 (CUL2)
Alternative Name:	Cullin 2 ( <a href="#">CUL2 Products</a> )
Background:	Synonyms: Cullin-2, CUL-2

## Target Details

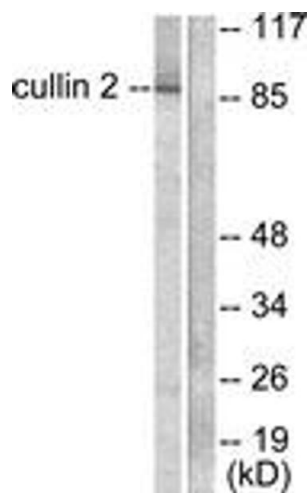
	NCBI Gene Symbol: CUL2
Molecular Weight:	86 kDa
Gene ID:	8453
OMIM:	603135
UniProt:	<a href="#">Q13617</a>
Pathways:	<a href="#">M Phase</a> , <a href="#">Asymmetric Protein Localization</a> , <a href="#">SARS-CoV-2 Protein Interactome</a>

## Application Details

Application Notes:	WB: 1:500~1:1000 IHC: 1:50~1:100 IF: 1:100~1:500 ELISA: 1:5000
Comment:	Unigene-Number: Hs.82919 (NCBI Gene Symbol: CUL2)
Restrictions:	For Research Use only

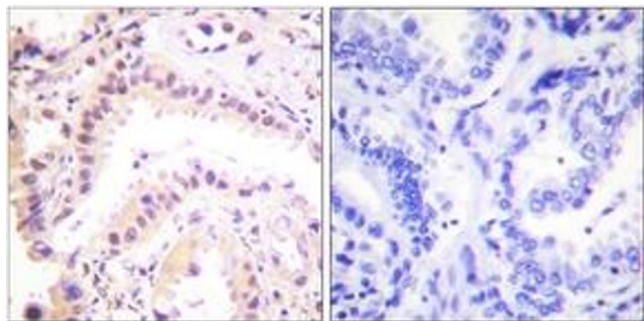
## Handling

Format:	Liquid
Concentration:	1 mg/mL
Buffer:	phosphate buffered saline (without Mg <sup>2+</sup> and Ca <sup>2+</sup> ), pH 7.4, 150 mM NaCl, 0.02 % sodium azide and 50 % glycerol.
Preservative:	Sodium azide
Precaution of Use:	This product contains sodium azide: a POISONOUS AND HAZARDOUS SUBSTANCE which should be handled by trained staff only.
Storage:	-20 °C
Storage Comment:	Stable at -20°C for at least 1 year.
Expiry Date:	12 months



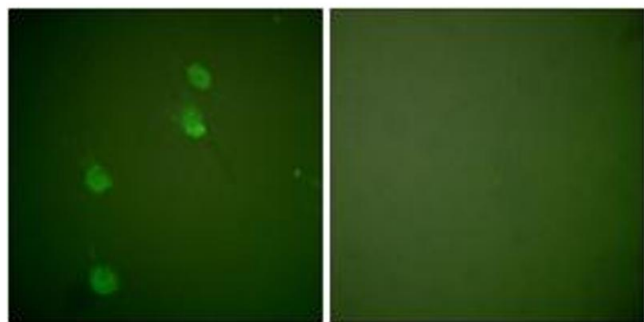
Western Blotting

**Image 1.** Western blot analysis of extracts from LOVO cells, using Cullin 2 Antibody. The lane on the right is treated with the synthesized peptide.



Immunohistochemistry

**Image 2.** Immunohistochemistry analysis of paraffin-embedded human lung carcinoma tissue, using Cullin 2 Antibody. The picture on the right is treated with the synthesized peptide.



Immunofluorescence

**Image 3.** Immunofluorescence analysis of NIH-3T3 cells, using Cullin 2 Antibody. The picture on the right is treated with the synthesized peptide.