

Datasheet for ABIN1533247
anti-Cyclin A antibody (AA 221-270)



[Go to Product page](#)

3 Images

Overview

Quantity:	100 µL
Target:	Cyclin A (CCNA2)
Binding Specificity:	AA 221-270
Reactivity:	Human, Mouse, Rat
Host:	Rabbit
Clonality:	Polyclonal
Conjugate:	This Cyclin A antibody is un-conjugated
Application:	Western Blotting (WB), Immunohistochemistry (IHC), Immunofluorescence (IF), ELISA

Product Details

Immunogen:	The antiserum was produced against synthesized peptide derived from human Cyclin A.
Isotype:	IgG
Specificity:	Cyclin A Antibody detects endogenous levels of total Cyclin A protein.
Purification:	The antibody was purified from rabbit antiserum by affinity-chromatography using immunogen.
Purity:	> 95 %

Target Details

Target:	Cyclin A (CCNA2)
Alternative Name:	Cyclin A (CCNA2 Products)
Background:	Synonyms: cyclin A1, Cyclin A1

Target Details

NCBI Gene Symbol: CCNA1

Molecular Weight: 52 kDa

Gene ID: 8900, 890

OMIM: 604036

UniProt: [P78396](#), [P20248](#)

Pathways: [PI3K-Akt Signaling](#), [Cell Division Cycle](#), [AMPK Signaling](#), [Mitotic G1-G1/S Phases](#), [DNA Replication](#), [M Phase](#), [Synthesis of DNA](#)

Application Details

Application Notes: WB: 1:500~1:1000 IHC: 1:50~1:100 IF: 1:100~1:500 ELISA: 1:10000

Comment: Unigene-Number: Hs.417050, Hs.58974 (NCBI Gene Symbol: CCNA1)

Restrictions: For Research Use only

Handling

Format: Liquid

Concentration: 1 mg/mL

Buffer: phosphate buffered saline (without Mg²⁺ and Ca²⁺), pH 7.4, 150 mM NaCl, 0.02 % sodium azide and 50 % glycerol.

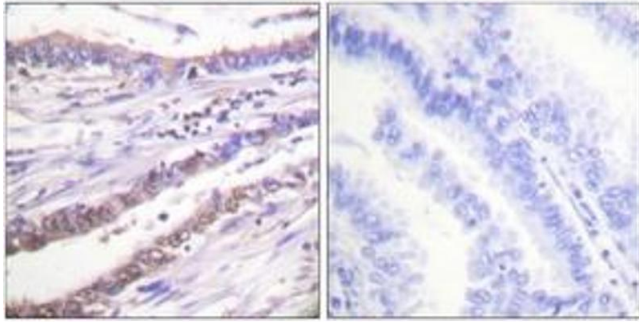
Preservative: Sodium azide

Precaution of Use: This product contains sodium azide: a POISONOUS AND HAZARDOUS SUBSTANCE which should be handled by trained staff only.

Storage: -20 °C

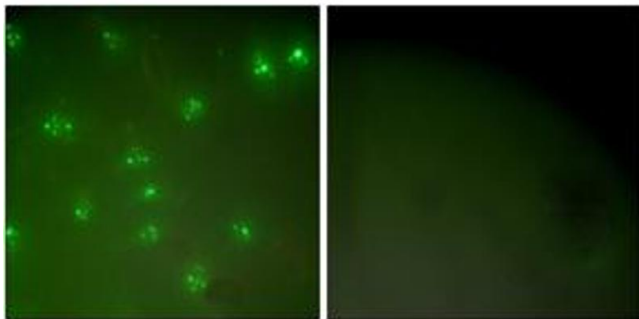
Storage Comment: Stable at -20°C for at least 1 year.

Expiry Date: 12 months



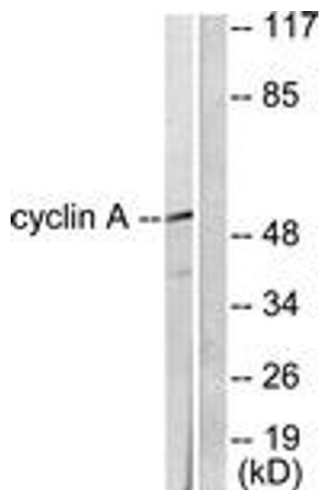
Immunohistochemistry

Image 1. Immunohistochemistry analysis of paraffin-embedded human lung carcinoma tissue, using Cyclin A Antibody. The picture on the right is treated with the synthesized peptide.



Immunofluorescence

Image 2. Immunofluorescence analysis of COS7 cells, using Cyclin A Antibody. The picture on the right is treated with the synthesized peptide.



Western Blotting

Image 3. Western blot analysis of extracts from COS7 cells, using Cyclin A Antibody. The lane on the right is treated with the synthesized peptide.