

Datasheet for ABIN1533250
anti-Cyclin F antibody (AA 737-786)

2 Images

[Go to Product page](#)

Overview

Quantity:	100 µg
Target:	Cyclin F (CCNF)
Binding Specificity:	AA 737-786
Reactivity:	Human
Host:	Rabbit
Clonality:	Polyclonal
Conjugate:	This Cyclin F antibody is un-conjugated
Application:	Western Blotting (WB), ELISA, Immunohistochemistry (IHC)

Product Details

Immunogen:	The antiserum was produced against synthesized peptide derived from human Cyclin F.
Isotype:	IgG
Specificity:	Cyclin F Antibody detects endogenous levels of total Cyclin F protein.
Purification:	The antibody was purified from rabbit antiserum by affinity-chromatography using immunogen.
Purity:	> 95 %

Target Details

Target:	Cyclin F (CCNF)
Alternative Name:	Cyclin F (CCNF Products)
Background:	Synonyms: FBX1, FBXO1, F-box only protein 1, cyclin F

Target Details

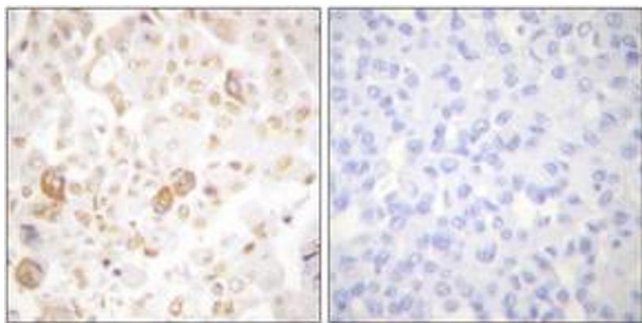
	NCBI Gene Symbol: CCNF
Molecular Weight:	87 kDa
Gene ID:	899
OMIM:	600227
UniProt:	P41002

Application Details

Application Notes:	WB: 1:500~1:1000 IHC: 1:50~1:100 ELISA: 1:10000
Comment:	Unigene-Number: Hs.1973 (NCBI Gene Symbol: CCNF)
Restrictions:	For Research Use only

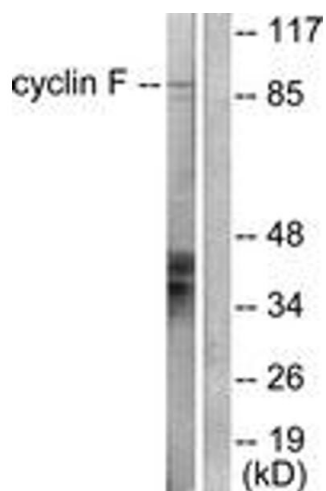
Handling

Format:	Liquid
Concentration:	1 mg/mL
Buffer:	phosphate buffered saline (without Mg ²⁺ and Ca ²⁺), pH 7.4, 150 mM NaCl, 0.02 % sodium azide and 50 % glycerol.
Preservative:	Sodium azide
Precaution of Use:	This product contains sodium azide: a POISONOUS AND HAZARDOUS SUBSTANCE which should be handled by trained staff only.
Storage:	-20 °C
Storage Comment:	Stable at -20°C for at least 1 year.
Expiry Date:	12 months



Immunohistochemistry

Image 1. Immunohistochemistry analysis of paraffin-embedded human breast carcinoma tissue, using Cyclin F Antibody. The picture on the right is treated with the synthesized peptide.



Western Blotting

Image 2. Western blot analysis of extracts from HeLa cells, using Cyclin F Antibody. The lane on the right is treated with the synthesized peptide.